



# rtc<sup>®</sup>

QUICK CONNECT TECHNOLOGY  
[www.rtc-tec.com](http://www.rtc-tec.com)



## 090

rtc TYPE





European profile

Temperature Range - Temperaturbereich  
-5°C +180°C (+41°F +356°F) FPM (V)

Working Pressure - Betriebsdruck

rtc 090.06 0 - 10 bar (0 - 145 PSI)  
rtc 090.09 0 - 15 bar (0 - 217 PSI)  
rtc 090.13 0 - 15 bar (0 - 217 PSI)

Flow size - Nennweiten

rtc 090.06 6 mm  
rtc 090.09 9 mm  
rtc 090.13 13 mm

Standard version - Standardversion

Brass - Messing  
FPM (V) PTFE coated - Viton PTFE beschichtet

Material

Socket Body-  
Kupplungsgrundkörper : Brass - Messing  
Sleeve - Hülse : Brass - Messing  
Valve - Ventil : Brass - Messing  
Springs - Federn : Stainless steel - Edelstahl  
Locking Ring - Sprengring : Stainless steel - Edelstahl  
Balls - Kugeln : 18/8 Stainless steel - Edelstahl  
Seals - Dichtungen : FPM (V)  
Plug - Nippel : Brass - Messing

Options - Optionen

Stainless Steel - Edelstahl  
Safety lock - Sicherheitsentriegelung

Using Area

- On temperature regulation applications with hot or cold water, oil etc
- Injection moulding industries
- On steam line

Anwendungsbereiche

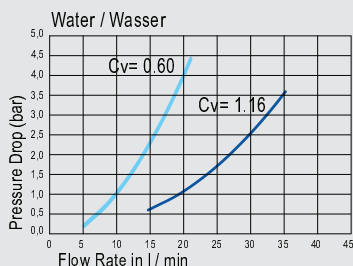
- Werkzeugtemperierung
- Kühlung mit Öl oder Wasser
- Kunststoffindustrie
- Dampfanwendungen



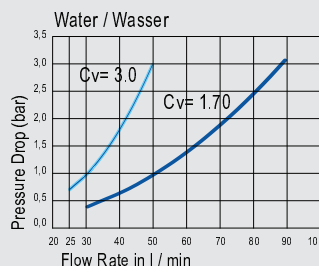
Safety type coupler for disconnect protection  
Sicherheitsfunktion für das ungewollte Trennen

Add "S" to item code / Fügen Sie "S" zur Artikelnummer hinzu

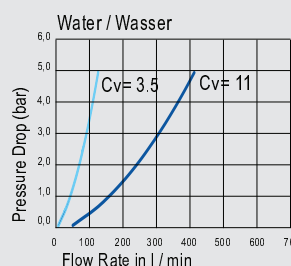
Flow Rate vs Pressure Drop Graph



— 090.06 = Free passage 090.06 = Freier Durchgang  
— 090.06 = Shut-off 090.06 = Absperrend



— 090.09 = Free passage 090.09 = Freier Durchgang  
— 090.09 = Shut-off 090.09 = Absperrend



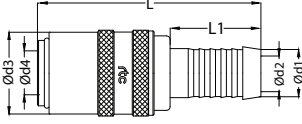
— 090.13 = Free passage 090.13 = Freier Durchgang  
— 090.13 = Shut-off 090.13 = Absperrend

090  
rtc TYPE

**rtc** TYPE 090 Standard hose tail socket / Kupplung mit gerader Standard - Schlauchtülle



Sockets / Kupplungen

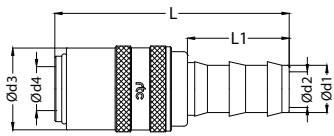


Size / Größe	Order No / Bestellnr. With Valve / Mit Ventil	Order No / Bestellnr. Without Valve / ohne Ventil	D1	D2	D3	D4	L	L1
6	090.06 SHB 06	090.06 SHF 06	6	5	17	9	53	22.5
6	090.06 SHB 09	090.06 SHF 09	9	6	17	9	53	22.5
6	090.06 SHB 13	090.06 SHF 13	13	9	17	9	55	25
9	090.09 SHB 09	090.09 SHF 09	9	8	22	13	61.5	25
9	090.09 SHB 13	090.09 SHF 13	13	9	22	13	61.5	25
13	090.13 SHB 19	090.13 SHF 19	19	13	31	19	93	32

**rtc** TYPE 090 Push to connect hose tail socket / Kupplung mit gerader Schnellsteck - Schlauchtülle



Sockets / Kupplungen

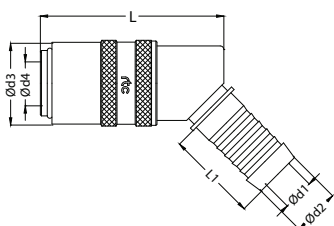


Size / Größe	Order No / Bestellnr. With Valve / Mit Ventil	Order No / Bestellnr. Without Valve / ohne Ventil	D1	D2	D3	D4	L	L1
6	090.06 SPB 10	090.06 SPF 10	10	6	17	9	59	24
9	090.09 SPB 10	090.09 SPF 10	10	8	22	13	65	24
9	090.09 SPB 13	090.09 SPF 13	13	9	22	13	65	28
13	090.13 SPB 16	090.13 SPF 16	16	13	31	19	96	38
13	090.13 SPB 19	090.13 SPF 19	19	13	31	19	96	38

**rtc** TYPE 090 Standard hose tail socket 45° / Kupplung mit 45° Standard - Schlauchtülle



Sockets / Kupplungen

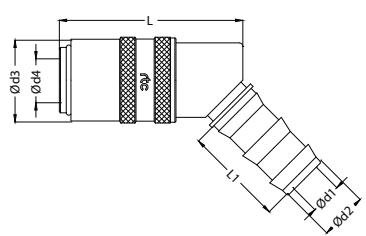


Size / Größe	Order No / Bestellnr. With Valve / Mit Ventil	Order No / Bestellnr. Without Valve / ohne Ventil	D1	D2	D3	D4	L	L1
6	090.06 SHB 06 45	090.06 SHF 06 45	6	5	17	9	43	22.5
6	090.06 SHB 09 45	090.06 SHF 09 45	9	6	17	9	43	22.5
9	090.09 SHB 09 45	090.09 SHF 09 45	9	8	22	13	51	25
9	090.09 SHB 13 45	090.09 SHF 13 45	13	9	22	13	51	25
13	090.13 SHB 19 45	090.13 SHF 19 45	19	13	31	19	78	32

**rtc** TYPE 090 Push to connect hose tail socket 45° / Kupplung mit 45° Schnellsteck - Schlauchtülle



Sockets / Kupplungen



Size / Größe	Order No / Bestellnr. With Valve / Mit Ventil	Order No / Bestellnr. Without Valve / ohne Ventil	D1	D2	D3	D4	L	L1
6	090.06 SPB 10 45	090.06 SPF 10 45	10	6	17	9	43	24
9	090.09 SPB 10 45	090.09 SPF 10 45	10	8	22	13	51	24
9	090.09 SPB 13 45	090.09 SPF 13 45	13	9	22	13	51	28
13	090.13 SPB 19 45	090.13 SPF 19 45	19	13	31	19	78	38

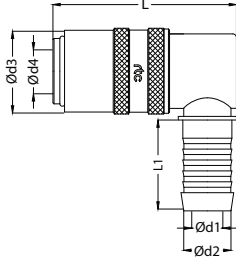


Standard hose tail socket 90° / Kupplung mit 90° Standard - Schlauchtülle

TYPE 090



Sockets / Kupplungen



Size / Größe	Order No / Bestellnr. With Valve / Mit Ventil	Order No / Bestellnr. Without Valve / ohne Ventil	D1	D2	D3	D4	L	L1
6	090.06 SHB 06 90	090.06 SHF 06 90	6	5	17	9	43	22.5
6	090.06 SHB 09 90	090.06 SHF 09 90	9	6	17	9	43	22.5
9	090.09 SHB 09 90	090.09 SHF 09 90	9	8	22	13	51	30
9	090.09 SHB 13 90	090.09 SHF 13 90	13	9	22	13	51	30
13	090.13 SHB 19 90	090.13 SHF 19 90	19	13	31	19	78	32

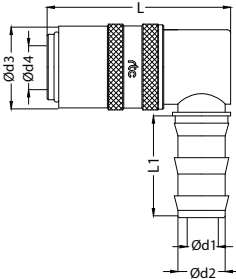


Push to connect hose tail socket 90° / Kupplung mit 90° Schnellsteck - Schlauchtülle

TYPE 090



Sockets / Kupplungen



Size / Größe	Order No / Bestellnr. With Valve / Mit Ventil	Order No / Bestellnr. Without Valve / ohne Ventil	D1	D2	D3	D4	L	L1
6	090.06 SPB 10 90	090.06 SPF 10 90	10	6	17	9	43	33
9	090.09 SPB 10 90	090.09 SPF 10 90	10	8	22	13	51	33
9	090.09 SPB 13 90	090.09 SPF 13 90	13	9	22	13	51	33
13	090.13 SPB 19 90	090.13 SPF 19 90	19	13	31	19	78	38

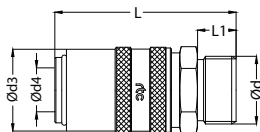


Cylindrical male thread socket / Kupplung mit Aussengewinde zylindrisch

TYPE 090



Sockets / Kupplungen



Size Größe	Order No / Bestellnr. With Valve / Mit Ventil	Order No / Bestellnr. Without Valve / ohne Ventil	D	D3	D4	L	L1	HEX.
6	090.06 SMB 13	090.06 SMF 13	BSP 1/4	17	9	48	9	17
6	090.06 SMB 17	090.06 SMF 17	BSP 3/8	17	9	48	9	19
6	090.06 SMB 1415	090.06 SMF 1415	M14x1.5	17	9	48	9	17
6	090.06 SMB 1615	090.06 SMF 1615	M16x1.5	17	9	48	9	19
9	090.09 SMB 13	090.09 SMF 13	BSP 1/4	22	13	52	9	22
9	090.09 SMB 17	090.09 SMF 17	BSP 3/8	22	13	52	9	22
9	090.09 SMB 21	090.09 SMF 21	BSP 1/2	22	13	52	10	24
9	090.09 SMB 1615	090.09 SMF 1615	M16x1.5	22	13	52	9	22
13	090.13 SMB 21	090.13 SMF 21	BSP 1/2	31	19	74	12	30
13	090.13 SMB 26	090.13 SMF 26	BSP 3/4	31	19	78	16	30
13	090.13 SMB 2415	090.13 SMF 2415	M24x1.5	31	19	78	16	30

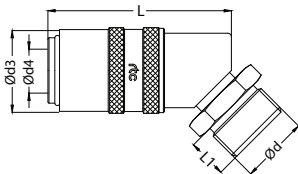


Cylindrical male thread socket 45° / Kupplung mit 45° Aussengewinde zylindrisch

TYPE 090



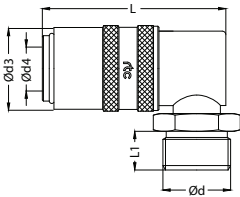
Sockets / Kupplungen



Size Größe	Order No / Bestellnr. With Valve / Mit Ventil	Order No / Bestellnr. Without Valve / ohne Ventil	D2	D3	D4	L	L1	HEX.
6	090.06 SMB 13 45	090.06 SMF 13 45	BSP 1/4	17	9	47	9	17
6	090.06 SMB 17 45	090.06 SMF 17 45	BSP 3/8	17	9	47	9	19
6	090.06 SMB 1415 45	090.06 SMF 1415 45	M14x1.5	17	9	47	9	17
6	090.06 SMB 1615 45	090.06 SMF 1615 45	M16x1.5	17	9	47	9	19
9	090.09 SMB 17 45	090.09 SMF 17 45	BSP 3/8	22	13	54	9	22
9	090.09 SMB 1615 45	090.09 SMF 1615 45	M16x1.5	22	13	54	9	22
13	090.13 SMB 2415 45	090.13 SMF 2415 45	M24x1.5	31	19	80	18	30

**rtc TYPE 090** Cylindrical male thread socket 90° / Kupplung mit 90° Aussengewinde zylindrisch

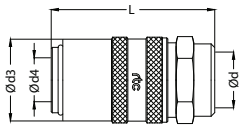
Sockets / Kupplungen



Size Größe	Order No / Bestellnr. With Valve / Mit Ventil	Order No / Bestellnr. Without Valve / ohne Ventil	D	D3	D4	L	L1	HEX.
6	090.06 SMB 13 90	090.06 SMF 13 90	BSP 1/4	17	9	47	9	17
6	090.06 SMB 17 90	090.06 SMF 17 90	BSP 3/8	17	9	47	9	19
6	090.06 SMB 1415 90	090.06 SMF 1415 90	M14x1.5	17	9	47	9	17
6	090.06 SMB 1615 90	090.06 SMF 1615 90	M16x1.5	17	9	47	9	19
9	090.09 SMB 17 90	090.09 SMF 17 90	BSP 3/8	22	13	54	9	22
9	090.09 SMB 1615 90	090.09 SMF 1615 90	M16x1.5	22	13	54	9	22
13	090.13 SMB 2415 90	090.13 SMF 2415 90	M24x1.5	31	19	80	18	30

**rtc TYPE 090** Cylindrical female thread socket / Kupplung mit Innengewinde zylindrisch

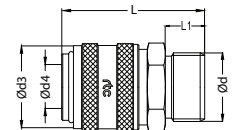
Sockets / Kupplungen



Size Größe	Order No / Bestellnr. With Valve / Mit Ventil	Order No / Bestellnr. Without Valve / ohne Ventil	D	D3	D4	L	HEX.
6	090.06 SFB 13	090.06 SFF 13	BSP 1/4	17	9	42	17
6	090.06 SFB 17	090.06 SFF 17	BSP 3/8	17	9	42	21
6	090.06 SFB 1415	090.06 SFF 1415	M14x1.5	17	9	42	17
9	090.09 SFB 13	090.09 SFF 13	BSP 1/4	22	13	45	22
9	090.09 SFB 17	090.09 SFF 17	BSP 3/8	22	13	46	22
9	090.09 SFB 21	090.09 SFF 21	BSP 1/2	22	13	49	22
9	090.09 SFB 1615	090.09 SFF 1615	M16x1.5	22	13	49	22
13	090.13 SFB 26	090.13 SFF 26	BSP 3/4	31	19	78	33

**rtc TYPE 090** Cylindrical male thread socket short version / Kupplung mit Aussengewinde zylindrisch kurze Version

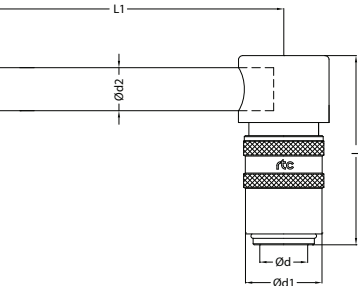
Sockets / Kupplungen



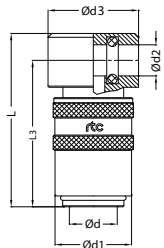
Size Größe	Order No / Bestellnr. Without Valve / Ohne Ventil	D	D3	D4	L	L1	HEX.
6	090.06 SMB 13x38	BSP 1/4	17	9	38	9	17
9	090.09 SMB 17x38	BSP 3/8	22	13	38	9	21

**rtc TYPE 090** Diverting sockets / Umlenkkupplung

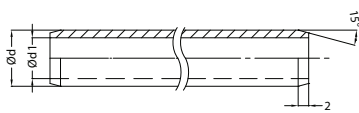
Sockets / Kupplungen



Size Größe	Order No / Bestellnr. Without Valve / Ohne Ventil	D	D1	D2	L	L1	L2
6	090.06 SCF 125	9	17	8x1	44	125	2
6	090.06 SCF 250	9	17	8x1	44	250	2
6	090.06 SCF 500	9	17	8x1	44	500	2
9	090.09 SCF 125	13	22	10x1	51	125	2
9	090.09 SCF 250	13	22	10x1	51	250	2
9	090.09 SCF 500	13	22	10x1	51	500	2
13	090.13 SCF 160	19	34	14x1	80	160	3
13	090.13 SCF 315	19	34	14x1	80	315	3
13	090.13 SCF 500	19	34	14x1	80	500	3



Size Größe	Order No / Bestellnr. Without Valve / Ohne Ventil	D	D1	D2	D3	L	L1
6	090.06 SCF 00	9	17	8x1	20	44	37
9	090.09 SCF 00	13	22	10x1	26	51	42
13	090.13 SCF 00	19	34	14x1	36	80	67



Pipe preparation / Verbindungsrohr

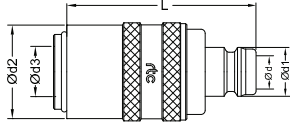
Brass Tube Messing Rohr	D	D1	Length Länge
TBM 0810x1000	8	6	1000mm
TBM 1010x1000	10	8	1000mm
TBM 1410x1000	14	12	1000mm



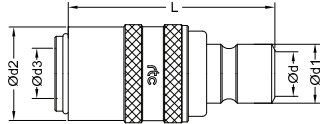
Adapting Socket with plug / Adapterkupplung mit Nippel

TYPE 090 

Sockets and Plugs / Kupplung und Nippel



Order No / Bestellnr. With Valve / Mit Ventil	Order No / Bestellnr. Without Valve / Ohne Ventil	Plug Size Nippel Größe (D)	D1	D2	Socket Size Kupplung Größe (D3)	L	Passage
090.06 SXB 090.06	090.06 SXF 090.06	6	9	17	9	45	6
090.06 SXB 090.09	090.06 SXF 090.09	9	13	17	9	45	6
090.09 SXB 090.06	090.09 SXF 090.06	6	9	22	13	50.5	6
090.09 SXB 090.09	090.09 SXF 090.09	9	13	22	13	50.5	9



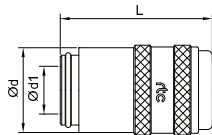
090.06 SXB 099.06	090.06 SXF 099.06	6	9.5	17	9	47.5	6
090.06 SXB 099.09	090.06 SXF 099.09	9	13.5	17	9	47.5	6
090.09 SXB 099.06	090.09 SXF 099.06	6	9.5	22	13	52	6
090.09 SXB 099.09	090.09 SXF 099.09	9	13.5	22	13	52	9



Blank end socket / Blindkupplung

TYPE 090 

Sockets / Kupplungen



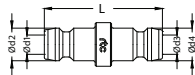
Order No / Bestellnr.	Body Size Größe (D)	D1	L
090.06 PL 00	6	17	30
090.09 PL 00	9	22	37
090.13 PL 00	13	31	58



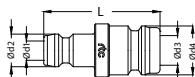
Adapting Plug / Adapternippel

TYPE 090 

Plugs / Nippel



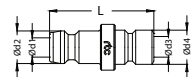
Order No / Bestellnr.	D1	D2	D3	D4	L
090.06 PXP 090.06	6	9.5	6	9.5	34



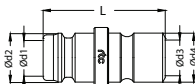
090.06 PXP 090.09	6	9.5	9	13	34
-------------------	---	-----	---	----	----



090.09 PXP 090.09	9	13	9	13	34
-------------------	---	----	---	----	----



090.09 PXP 099.06	9	13	6	9.5	29
-------------------	---	----	---	-----	----



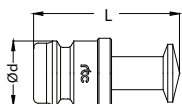
090.09 PXP 099.09	9	13	9	13.5	36
-------------------	---	----	---	------	----



Stop Plug / Blindnippel

TYPE 090 

Plugs / Nippel



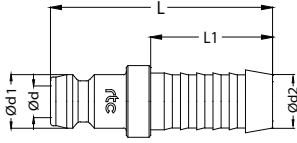
Order No / Bestellnr.	Body Size Größe	D	L
090.06 SL 00	6	9	28
090.09 SL 00	9	13	30
090.13 SL 00	13	19	52

**rtc** TYPE 090

Standard hose tail plug / Nippel mit gerader Standard - Schlauchtülle



Plugs / Nippel



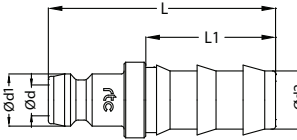
Order No / Bestellnr.	Body Size Größe (D)	D1	D2	L	L1
090.06 PHF 06	6	9	6	39.5	22.5
090.06 PHF 09	6	9	9	39.5	22.5
090.06 PHF 13	6	9	13	39.5	22.5
090.09 PHF 09	9	13	9	39.5	22.5
090.09 PHF 13	9	13	13	42	25
090.13 PHF 16	13	19	16	67	32
090.13 PHF 19	13	19	19	67	32

**rtc** TYPE 090

Push to connect hose tail plug / Nippel mit gerader Schnellsteck - Schlauchtülle



Plugs / Nippel



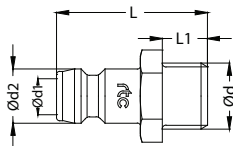
Order No / Bestellnr.	Body Size Größe (D)	D1	D2	L	L1
090.06 PPF 10	6	9	10	42	28
090.09 PPF 10	9	13	10	43	28
090.09 PPF 13	9	13	13	47	28
090.13 PPF 16	13	19	16	68	38
090.13 PPF 19	13	19	19	68	38

**rtc** TYPE 090.06

Cylindrical male thread plug / Nippel mit Aussengewinde zylindrisch



Plugs / Nippel



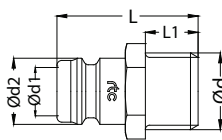
Order No / Bestellnr.	D	D1	D2	L	L1	HEX.
090.06 PMF 10	BSP 1/8	6	9	24	7	11
090.06 PMF 13	BSP 1/4	6	9	26	9	14
090.06 PMF 17	BSP 3/8	6	9	26	9	17
090.06 PMF 1010	M10x1	6	9	24	7	11
090.06 PMF 1415	M14x1.5	6	9	26	9	15
090.06 PMF 1615	M16x1.5	6	9	26	9	17

**rtc** TYPE 090.09

Cylindrical male thread plug / Nippel mit Aussengewinde zylindrisch



Plugs / Nippel



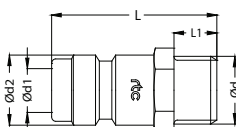
Order No / Bestellnr.	D	D1	D2	L	L1	HEX.
090.09 PMF 10	BSP 1/8	9	13	24	7	14
090.09 PMF 13	BSP 1/4	9	13	26	9	14
090.09 PMF 17	BSP 3/8	9	13	26	9	17
090.09 PMF 21	BSP 1/2	9	13	24	12	22
090.09 PMF 1010	M10x1	9	13	24	7	14
090.09 PMF 1415	M14x1.5	9	13	26	9	15
090.09 PMF 1615	M16x1.5	9	13	26	9	17

**rtc** TYPE 090.13

Cylindrical male thread plug / Nippel mit Aussengewinde zylindrisch



Plugs / Nippel



Order No / Bestellnr.	D	D1	D2	L	L1	HEX.
090.13 PMF 21	BSP 1/2	13	19	47	12	22
090.13 PMF 26	BSP 3/4	13	19	51	16	27
090.13 PMF 2415	M24x1.5	13	19	51	16	27

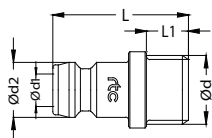


Cylindrical male thread plug inner hex. / Nippel mit Aussengewinde zylindrisch Innensechskant

TYPE 090.06



Plugs / Nippel



Order No / Bestellnr.	D	D1	D2	L	L1	HEX.
090.06 PMFH 10	BSP 1/8	6	9	24	7	5
090.06 PMFH 13	BSP 1/4	6	9	27	9	5
090.06 PMFH 0875	M8x075	6	9	24	9	5
090.06 PMFH 1010	M10x1	6	9	24	9	5
090.06 PMFH 1415	M14x1.5	6	9	27	9	5

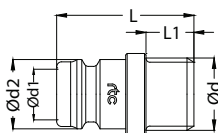


Cylindrical male thread plug inner hex. / Nippel mit Aussengewinde zylindrisch Innensechskant

TYPE 090.09



Plugs / Nippel



Order No / Bestellnr.	D	D1	D2	L	L1	HEX.
090.09 PMFH 13	BSP 1/4	9	13	26	9	8
090.09 PMFH 17	BSP 3/8	9	13	26	9	8
090.09 PMFH 1415	M14x1.5	9	13	26	9	8

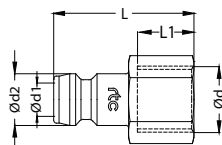


Cylindrical female thread plug / Nippel mit Innengewinde zylindrisch

TYPE 090.06



Plugs / Nippel



Order No / Bestellnr.	D	D1	D2	L	L1	HEX.
090.06 PFF 10	BSP 1/8	6	9	25	7	14
090.06 PFF 13	BSP 1/4	6	9	27	9	17
090.06 PFF 17	BSP 3/8	6	9	27	9	19

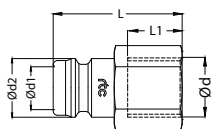


Cylindrical female thread plug / Nippel mit Innengewinde zylindrisch

TYPE 090.09



Plugs / Nippel



Order No / Bestellnr.	D	D1	D2	L	L1	HEX.
090.09 PFF 17	BSP 3/8	9	13	25	9	19
090.09 PFF 21	BSP 1/2	9	13	28	12	24

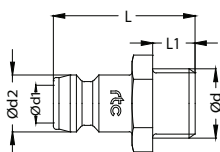


Cylindrical male thread plug with valve / Verschlussnippel mit Aussengewinde zylindrisch

TYPE 090.06



Plugs / Nippel

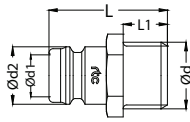


Order No / Bestellnr.	D	D1	D2	L	L1	HEX.
090.06 PMB 13	BSP 1/4	6	13	29	9	14
090.06 PMB 17	BSP 3/8	9	13	29	9	17
090.06 PMB 1415	M14x1.5	6	13	29	9	15



**rtc** TYPE 090.09 Cylindrical male thread plug with valve / Verschlussnippel mit Aussengewinde zylindrisch

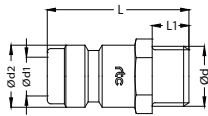
Plugs / Nippel



Order No / Bestellnr.	D	D1	D2	L	L1	HEX.
090.09 PMB 13	BSP 1/4	9	13	29	9	14
090.09 PMB 17	BSP 3/8	9	13	29	9	17
090.09 PMB 21	BSP 1/2	9	13	29	9	22
090.09 PMB 1415	M14x1.5	9	13	29	9	15
090.09 PMB 1615	M16x1.5	9	13	29	9	17

**rtc** TYPE 090.13 Cylindrical male thread plug with valve / Verschlussnippel mit Aussengewinde zylindrisch

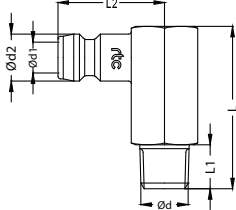
Plugs / Nippel



Order No / Bestellnr.	D	D1	D2	L	L1	HEX.
090.13 PMB 21	BSP 1/2	13	19	47	12	22
090.13 PMB 26	BSP 3/4	13	19	51	16	27
090.13 PMB 2415	M24x1.5	13	19	51	16	27

**rtc** TYPE 090.06 Male thread plug 90° / Nippel mit Aussengewinde (Metric DIN 158 - Conical DIN 2999)

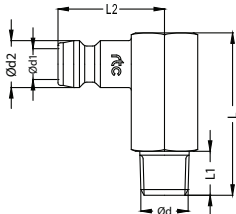
Plugs / Nippel



Order No / Bestellnr.	D	D1	D2	L	L1	L2	HEX.
090.06 PRF 10 90	BSPT 1/8	6	9	27	9	23	11
090.06 PRF 13 90	BSPT 1/4	6	9	29	11	23	15
090.06 PKF 0875 90	M8x075	6	9	27	9	23	11
090.06 PKF 1010 90	M10x1	6	9	27	9	23	11
090.06 PKF 1415 90	M14x1.5	6	9	29	11	23	15

**rtc** TYPE 090.09 Male thread plug 90° / Nippel mit Aussengewinde (Metric DIN 158 - Conical DIN 2999)

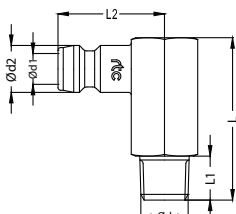
Plugs / Nippel



Order No / Bestellnr.	D	D1	D2	L	L1	L2	HEX.
090.09 PRF 13 90	BSPT 1/4	9	13	34	11	25	15
090.09 PRF 17 90	BSPT 3/8	9	13	34	11	25	17
090.09 PKF 1415 90	M14x1.5	9	13	34	11	25	15

**rtc** TYPE 090.13 Male thread plug 90° / Nippel mit Aussengewinde (Metric DIN 158 - Conical DIN 2999)

Plugs / Nippel



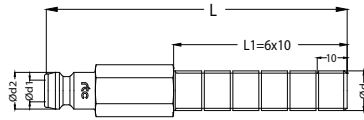
Order No / Bestellnr.	D	D1	D2	L	L1	L2	HEX.
090.13 PRF 21 90	BSPT 1/2	13	19	34	16	42	24
090.13 PRF 2415 90	M24x1.5	13	19	34	16	42	24



Male long thread plug / Nippel mit langem Aussengewinde zylindrisch

TYPE 090.06 

Plugs / Nippel



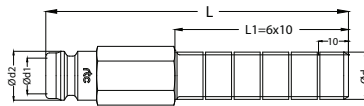
Order No / Bestellnr.	D	D1	D2	L	L1	HEX.
090.06 PMFL 10x100	BSP 1/8	6	9	100	6x10	11
090.06 PMFL 13x100	BSP 1/4	6	9	100	6x10	14
090.06 PMFL 17x100	BSP 3/8	6	9	100	6x10	17
090.06 PMFL 1010x100	M10x1	6	9	100	6x10	11
090.06 PMFL 1415x100	M14x1.5	6	9	100	6x10	14



Male long thread plug / Nippel mit langem Aussengewinde zylindrisch

TYPE 090.09 

Plugs / Nippel



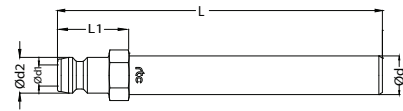
Order No / Bestellnr.	D	D1	D2	L	L1	HEX.
090.09 PMFL 13x100	BSP 1/4	9	13	100	6x10	14
090.09 PMFL 17x100	BSP 3/8	9	13	100	6x10	17
090.09 PMFL 1415x100	M14x1.5	9	13	100	6x10	14
090.09 PMFL 1615x100	M16x1.5	9	13	100	6x10	17



Plug extension / Nippelverlängerung

TYPE 090.06 

Plugs / Nippel



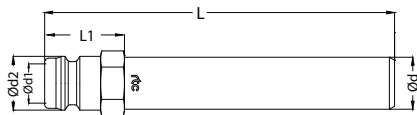
Order No / Bestellnr.	D	D1	D2	L	L1	HEX.
090.06 PEF 63	08	6	9	63	21	11
090.06 PEF 100	08	6	9	100	21	11
090.06 PEF 120	08	6	9	120	21	11
090.06 PEF 240	08	6	9	240	21	11
090.06 PEF 360	08	6	9	360	21	11



Plug extension / Nippelverlängerung

TYPE 090.09 

Plugs / Nippel



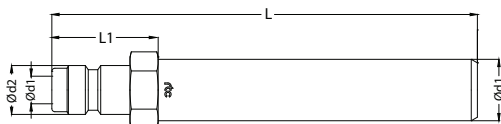
Order No / Bestellnr.	D	D1	D2	L	L1	HEX.
090.09 PEF 150-10	10	9	13	150	22	14
090.09 PEF 150	14	9	13	150	22	14
090.09 PEF 300	14	9	13	300	22	14
090.09 PEF 450	14	9	13	450	22	14



Plug extension / Nippelverlängerung

TYPE 090.13 

Plugs / Nippel



Order No / Bestellnr.	D	D1	D2	L	L1	HEX.
090.13 PEF 500	21	13	19	500	35	22
090.13 PEF 800	21	13	19	800	35	22

**rtc** TYPE 090 Extension for valved plug / Dichtungsrippel mit Verlängerung

Adapter / Nippel	Order No / Bestellnr.	D	D1	D2	L	L1	HEX.
	NFE 1415-120	M14x1.5	10	6	120	12	17
	NFE 1615-150	M16x1.5	14	9	150	12	22

**rtc** TYPE 090 Extension hose stems / Schlauchtülleverlängerung

Adapter / Nippel	Order No / Bestellnr.	D	D1	D2	L	L1	HEX.
	FHE 9-120 HT2	10	9	6	120	22.5	11
	FHE 13-150 HT2	14	13	9	150	25	15

**rtc** TYPE 090 Female thread standard hose connection / Innengewinde Schlauchtülle

Adapter / Nippel	Order No / Bestellnr.	ØD	D1	D2	L	L1	HEX.
	FHN 1415-09 HT2	M14x1.5	9	6	37.5	22.5	17
	FHN 1615-13 HT2	M16x1.5	13	9	40	22.5	21
	FHN 2415-19 HT2	M24x1.5	19	13	55	32	30

**rtc** TYPE 090 Standart hose connection with outer cone DIN 3863 and hex nut / Standard Schlauchtülle mit Überwurfmutter - Nippel mit Außenkonus DIN 3863

Adapter / Nippel	Order No / Bestellnr.	ØD	D1	D2	L	L1	HEX.
	FHNN 13-09 HT2	BSP 1/4	9	6	40	22.5	17
	FHNN 17-13 HT2	BSP 3/8	13	9	41	22.5	21
	FHNN 26-19 HT2	BSP 3/4	19	13	52	32	32
	FHNN 1415-09 HT2	M14x1.5	9	6	40	22.5	17
	FHNN 1615-13 HT2	M16x1.5	13	9	41	22.5	21
	FHNN 2415-19 HT2	M24x1.5	19	13	52	32	30

**rtc** TYPE 090 Male thred standart hose connection with collar / Außengewinde Standard Schlauchtülle mit Kragen

Adapter / Nippel	Order No / Bestellnr.	ØD	D1	D2	L	L1	L2	HEX.
	MHN 10-09/40 HT-2	BSP 1/8	9	6	40	22.5	14	11
	MHN 13-13/47 HT-2	BSP 1/4	13	8	47	22.5	16	15
	MHN 21-19/62 HT-2	BSP 1/2	19	13	62	35	22	22
	MHN 26-19/62 HT-2	BSP 3/4	19	13	62	35	22	27
	MHN 1010-09/40 HT-2	M10x1	9	6	40	22.5	14	11
	MHN 1215-13/47 HT-2	M12x1.5	13	7	47	25	16	15
	MHN 1415-13/47 HT-2	M14x1.5	13	9	47	25	16	15
	MHN 2415-19/62 HT-2	M24x1.5	19	13	62	35	22	27

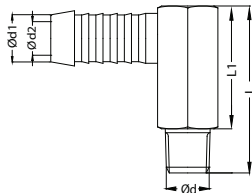


Elbow Nippel 90° / Winkelnippel 90°

TYPE 090



Adapter / Nippel



Order No / Bestellnr.	ØD	D1	D2	L	L1	HEX.
MHN 10-09 HT-2 90	BSPT 1/8	9	6	27	20	15
MHN 13-13 HT-2 90	BSPT 1/4	13	9	34	24	17
MHN 21-19 HT-2 90	BSPT 1/2	19	13	47	32	24
MHN 0875-09 HT-2 90	M8x0.75	9	4.5	27	20	15
MHN 1010-09 HT-2 90	M10x1	9	6	27	20	15
MHN 1415-13 HT-2 90	M14x1.5	13	9	34	24	17
MHN 2415-19 HT-2 90	M24x1.5	19	13	47	32	24



Replacement seal set / Ersatz O-Ring Set

TYPE 090



Seals / O-Ringe



Order No / Bestellnr.	Type	Material	Working Temp.
SS 090.06 N	6	NBR	-10°C - 100°C
SS 090.09 N	9	NBR	-10°C - 100°C
SS 090.13 N	13	NBR	-10°C - 100°C
SS 090.06 V	6	FKM	-5°C - 200°C
SS 090.09 V	9	FKM	-5°C - 200°C
SS 090.13 V	13	FKM	-5°C - 200°C