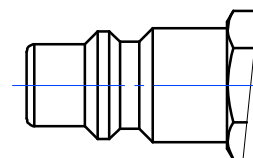
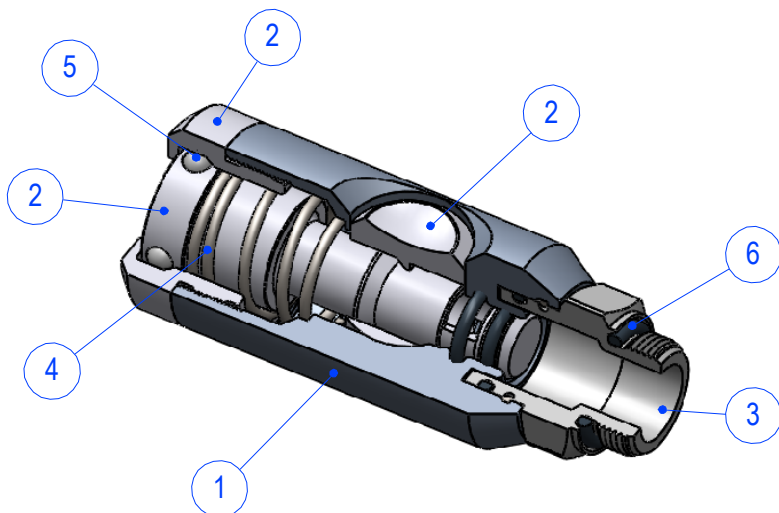


1	2	3	4	5	6
Body	Button, Valve and Venting ring	Thread	Springs	Balls	Seals
Anodised Aluminium	Hardened, zinc plated steel	Brass nickel plated UNI EN12164 CW614N	Stainless Steel AISI 302	Stainless Steel AISI 420	NBR



ISO 6150 B-15 Profile

Safety Coupler with release button according ISO 6150 B-15 profile

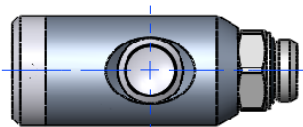
Complying with ISO4414 Norm

Nominal Diameter (DN): 8 mm

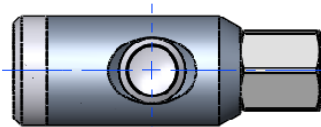
Working Temperature: -15°C ÷ 70°C

Working Pressure: 12 bar

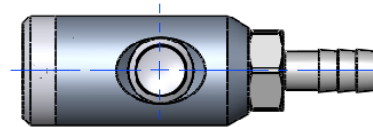
Flow rate: 1650 l/min (at 6bar and assembled plug; Δp 1bar)



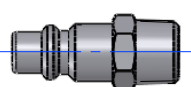
GU 44-10



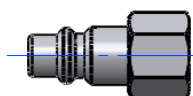
GU 44-12



GU 44-13



GU 44-20



GU 44-21



Giunto automatico a pulsante con dispositivo di sicurezza
per profilo ISO 6150 B-15

GU44