

# rtc<sup>®</sup>

QUICK CONNECT TECHNOLOGY  
[www.rtc-tec.com](http://www.rtc-tec.com)



## 462.06

rtc TYPE





Compatible - Kompatibilität

rtc	014
rtc	022
ARO	210
Cejn	300
Parker	B53
Rectus	14 & 22
Foster	210
AMFLO	C38

Temperature Range - Temperaturbereich

Nitrile (N)	-20°C + 110°C (-4°F + 230°F)
FPM (V)	-20°C + 180°C (-4°F + 356°F)
EPDM (Ethylene Propylene)	-40°C + 150°C (-40°F + 302°F)

Working Pressure - Betriebsdruck

25 Bar (360 PSI)

Connction / Disconnection Max. Pressure -

Ein- und Auskuppelbar bis Max. Druck  
15 Bar (220 PSI)

Flow size - Nennweite

rtc type 462.06 5.5mm (1/4")

Standard version - Standardversion

Seals - Dichtung : Nitrile (N)

Material of Standard Coupler / Material für die Standardversion

Body / Housing -	Steel tenifer threaded
Kupplungsgrundkörper/Gehäuse	Stahl teneferiert
Inner Part / Cylinder -	Surface hardened steel
	Zinc-nickel plated
Innenteil / Zylinder	Stahl gehärtet, Zink-Nickel beschichtet
Back Part - Hinterteil	Steel zinc plated - Stahl verzinkt
Sleeve -	Zinc diecasted, nickel plated & orange plastic coated
Hülse	Zink-Druckguss, vernickelt und orange Gummi beschichtet
Springs - Federn	Stainless steel - Edelstahl
Seals - Dichtungen	Nitrile (N)
Plug -	Surface hardened steel, galvanized
Nippel	Stahl gehärtet, verzinkt

Advantages

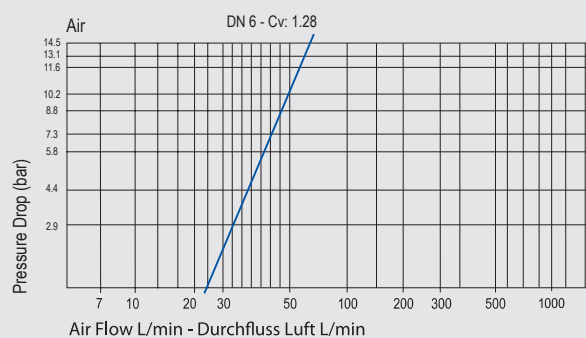
- The system perfectly fits to the ISO 4414, EN 983 safety requirements.
- Through flow, minimum pressure loss.
- Negligible Connecting Force
- Smart and Ergonomic features
- Ease of Handling
- Optimised Size

Vorteil

- Sicherheit gemäß ISO 4414, EN 983
- Voller Durchgang, sehr geringer Druckverlust
- Einfache Bedienung, sehr geringe Kuppelkraft
- Kompakte Bauform



Flow Rate vs Pressure Drop Graph

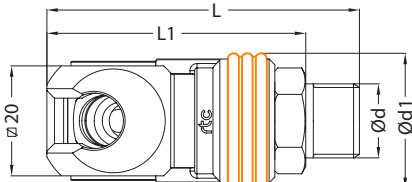


462.06  
rtc TYPE

rtc TYPE 462.06

Male thread socket / Kupplung mit Aussengewinde

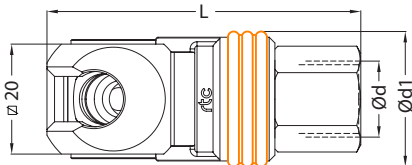


Socket / Kupplung	Size / Größe	Alternative Order No Alternative Bestellnr.	Order No / Bestellnr.	Ød	Ød1	L	L1	HEX.
	6	R205 00 294	462.06 SMO 13	BSP 1/4	25	59.5	48.5	19
	6	R205 00 295	462.06 SMO 17	BSP 3/8	25	59.5	48.5	19
	6	R205 00 296	462.06 SMO 21	BSP 1/2	25	61.5	49.5	22
	6	R205 00 297	462.06 STO 13	NPT 1/4	25	60.5	48.5	19
	6	R205 00 298	462.06 STO 17	NPT 3/8	25	62.5	48.5	19
	6	R205 00 299	462.06 STO 21	NPT 1/2	25	68.5	49.5	22

rtc TYPE 462.06

Female thread socket / Kupplung mit Innengewinde

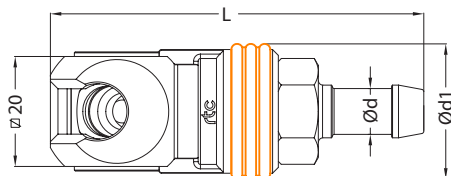


Socket / Kupplung	Size / Größe	Alternative Order No Alternative Bestellnr.	Order No / Bestellnr.	Ød	Ød1	L	L1	HEX.
	6	R205 00 286	462.06 SFO 10	BSP 1/8	25	56.5	-	19
	6	R205 00 287	462.06 SFO 13	BSP 1/4	25	56.5	-	19
	6	R205 00 288	462.06 SFO 17	BSP 3/8	25	58.5	-	19
	6	R205 00 289	462.06 SFO 21	BSP 1/2	25	60.5	-	24
	6	R205 00 290	462.06 SNO 10	NPT 1/8	25	57.5	-	19
	6	R205 00 291	462.06 SNO 13	NPT 1/4	25	57.5	-	19
	6	R205 00 292	462.06 SNO 17	NPT 3/8	25	59.5	-	20
	6	R205 00 293	462.06 SNO 21	NPT 1/2	25	65.5	-	24

rtc TYPE 462.06

Socket with hose barb / Kupplung mit Schlauchanschluss

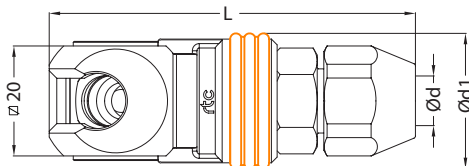


Socket / Kupplung	Size / Größe	Alternative Order No Alternative Bestellnr.	Order No / Bestellnr.	Ød	Ød1	L	L1	HEX.
	6	R205 00 300	462.06 SHO 06	Ø6 - 1/4	25	69	-	-
	6	R205 00 301	462.06 SHO 08	Ø8 - 5/16	25	69	-	-
	6	R205 00 302	462.06 SHO 10	Ø10 - 3/8	25	69	-	-

rtc TYPE 462.06

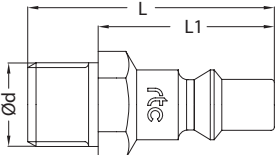
Socket with plastic hose connection / Kupplung mit Kunststoffschlauchanschluss



Socket / Kupplung	Size / Größe	Alternative Order No Alternative Bestellnr.	Order No / Bestellnr.	Ød	Ød1	L	L1	HEX.
	6	R205 00 304	462.06 SVO 0610	6.5x10	25	70	-	22
	6	R205 00 305	462.06 SVO 0812	8x12	25	70	-	22

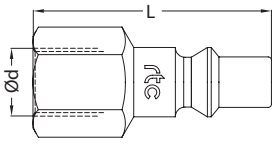
Plug with male thread / Nippel mit Aussengewinde

TYPE 462.06 **rtc**

Plug / Nippel	Size / Größe	Alternative Order No Alternative Bestellnr.	Order No / Bestellnr.	Ød	Ød1	L	L1	HEX.
	6	R255 00 000	462.06 PMF 10	BSP 1/8	-	36.5	30.5	14
	6	R255 00 001	462.06 PMF 13	BSP 1/4	-	40.5	30.5	17
	6	-	462.06 PMF 17	BSP 3/8	-	42	33.5	19
	6	R255 00 002	462.06 PTF 10	NPT 1/8	-	39.5	30.5	14
	6	R255 00 003	462.06 PTF 13	NPT 1/4	-	42.5	30.5	17
	6	R255 00 066	462.06 PTF 17	NPT 3/8	-	45.5	33.5	19

Plug with female thread / Nippel mit Innengewinde

TYPE 462.06 **rtc**

Plug / Nippel	Size / Größe	Alternative Order No Alternative Bestellnr.	Order No / Bestellnr.	Ød	Ød1	L	L1	HEX.
	6	R255 00 004	462.06 PFF 10	BSP 1/8	-	37.5	-	14
	6	R255 00 005	462.06 PFF 13	BSP 1/4	-	40.5	-	17
	6	-	462.06 PFF 17	BSP 3/8	-	41.5	-	19
	6	R255 00 006	462.06 PNF 10	NPT 1/8	-	37.5	-	14
	6	R255 00 007	462.06 PNF 13	NPT 1/4	-	41.5	-	17
	6	R255 00 068	462.06 PNF 17	NPT 3/8	-	42.5	-	19

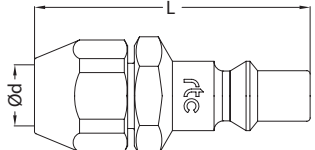
Plug with hose barb / Nippel mit Schlauchanschluss

TYPE 462.06 **rtc**

Plug / Nippel	Size / Größe	Alternative Order No Alternative Bestellnr.	Order No / Bestellnr.	Ød	Ød1	L	L1	HEX.
	6	R255 00 008	462.06 PHF 06	Ø6 - 1/4	14	51	-	-
	6	R255 00 009	462.06 PHF 08	Ø8 - 5/16	14	51	-	-
	6	R255 00 010	462.06 PHF 10	Ø10 - 3/8	14	51	-	-

Plug with plastic hose connection / Nippel mit Kunststoffschlauchanschluss

TYPE 462.06 **rtc**

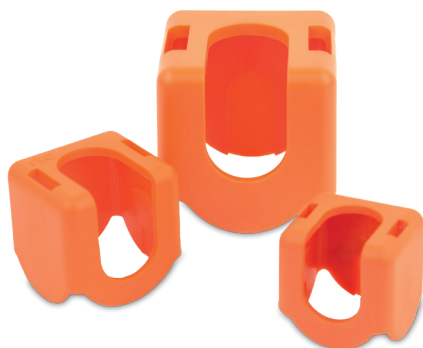
Plug / Nippel	Size / Größe	Alternative Order No Alternative Bestellnr.	Order No / Bestellnr.	Ød	Ød1	L	L1	HEX.
	6	-	462.06 PVF 0610	6.5x10	-	54	-	22
	6	-	462.06 PVF 0812	8x12	-	54	-	22

rtc TYPE HPC

Coupling head protective cover - Schutzhauben für Schwenkkupplungen



Suitable for series Geeignet für Serien	Alternative Order No Alternative Bestellnr.	Order No / Bestellnr.	∅
462.06 / 460.06 / 461.06 / 465.08 / 466.06 / 467.06	R295 00 385	HPC 0620	20
463.08 / 464.08 / 460.08 / 461.08	R295 00 340	HPC 0825	25
460.11 / 461.11	R295 00 531	HPC 1130	30



Material: Polyamide  
Werkstoff: Polyamid

rtc TYPE BPC

Coupling body protective cover - Schutzhülsen für Schwenkkupplungen



Suitable for series Geeignet für Serien	Alternative Order No Alternative Bestellnr.	Order No / Bestellnr.	∅
462.06 / 460.06 / 461.06 / 465.08 / 466.06 / 467.06	R295 00 480	BPC 0620	20
463.08 / 464.08 / 460.08 / 461.08	R295 00 481	BPC 0825	25
460.11 / 461.11	R295 00 482	BPC 1130	30



Material: Vinyl  
Werkstoff: Vinyl

rtc TYPE HGS

Plastic hose protective spiral guard - Knickschutz für Spiralschlauch



Alternative Order No Alternative Bestellnr.	Order No / Bestellnr.	∅d
-	HGS 0610	6.5x10
R295 00 337	HGS 0812	8x12
R295 00 401	HGS 1116	11x16



Material: Polyamide  
Werkstoff: Polyamid



# rtc®

QUICK CONNECT TECHNOLOGY

[www.rtc-tec.com](http://www.rtc-tec.com)



RTC TEC Bağlantı Elemanları A.Ş.

İTOSB, 9. Cadde No. 8  
34539 Tepeören / Tuzla / İstanbul  
TURKEY

Tel: +90 216 593 47 82

Fax: +90 216 593 47 85

[info@rtc-tec.com](mailto:info@rtc-tec.com)

[www.rtc-tec.com](http://www.rtc-tec.com)



RTC Couplings GmbH

Jahnstrasse 86  
73037 Göppingen  
GERMANY

Tel: +49 7161 98796-50

Fax: +49 7161 98796-79

[mail@rtc-couplings.com](mailto:mail@rtc-couplings.com)

[www.rtc-couplings.com](http://www.rtc-couplings.com)



RTC Couplings North America

60 Meg Drive.  
London, On. N6E 3T6  
CANADA

Tel: +1 519 204 8334

Fax: +1 519 518 6047

[tony@rtc-northamerica.com](mailto:tony@rtc-northamerica.com)

[www.rtc-northamerica.com](http://www.rtc-northamerica.com)