

NOTE: PRELIMINARY SPECIFICATION  
SUBJECT TO CHANGE W/O NOTICE

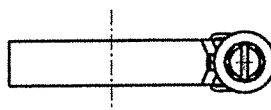
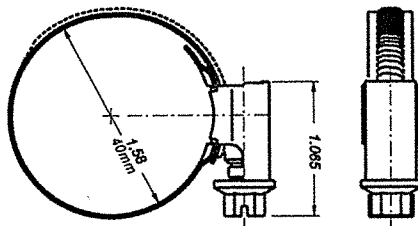
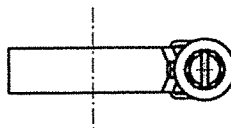
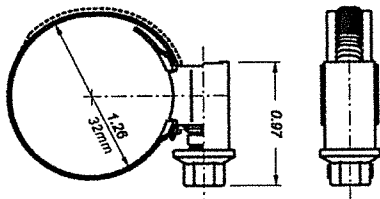
|   |  |  |                     |
|---|--|--|---------------------|
| CUST / DEPT / MACH:   |  | TITLE: EMBOSSED BAND WITH TRACKING SCREW |                     |
| TOLERANCE UNLESS NOTED:<br>.XXXX +/- .0002<br>.XXX +/- .005<br>.XX +/- .015 |  | DRAWN BY: RFF                            | REV: "A" 08/21/2014 |
| DATE: 11/12/2013  |  | P/N: EBTxxxWm                            |                     |

**MURRAY**  
MURRAY CORP.  
HUNT VALLEY, MD.

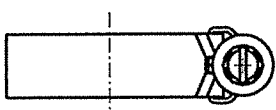
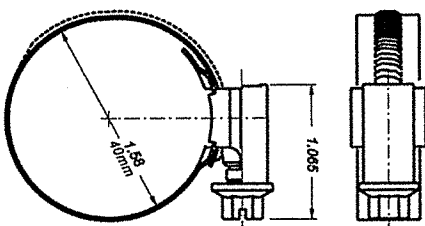
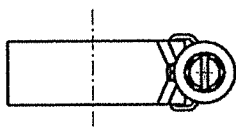
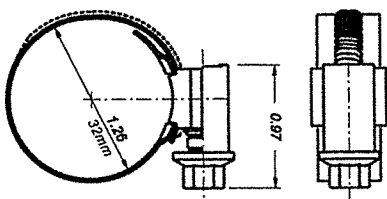
FOR OPEN DIA:  
32mm & SMALLER

FOR OPEN DIA:  
40mm & LARGER

9mm WIDE



12mm WIDE



FOR OPEN DIA:  
32mm & SMALLER

FOR OPEN DIA:  
40mm & LARGER

NOTE: PRELIMINARY SPECIFICATION  
SUBJECT TO CHANGE W/O NOTICE



TITLE: EMBOSSED BAND WITH  
TRACKING SCREW

DRAWN BY: RFF REV:

DATE: 11/12/2013 P/N: EBTxxxWm

PN EXAMPLE:

BAND WIDTH (mm): 9x OR 12x

**EBT 9x 050 Wm**

MATERIAL OF CONSTRUCTION:

WHERE:

L = 316

G = 304

F = 301 / 300 SERIES

B = 201 / 200 SERIES

E = 430

A = HYBRID - 201 BAND & 101 HOUSING & SCREW

OPEN DIAMETER SIZE ( mm )

SEE: DIN 3017-1

SEE: MURRAY EBxxx

EMBOSSED BAND TRACKER (SERIES)

**MINIMUM DESTRUCTIVE TORQUE:**

FOR 9mm SERIES: 18mm DIAMETER & UNDER = 30 in.lbs. MINIMUM

FOR 9mm SERIES: OVER 18mm DIAMETER = 40 in.lbs. MINIMUM

FOR 12mm SERIES: ALL DIAMETERS = 60 in.lbs. MINIMUM

MURRAY RESERVES THE RIGHT TO SUBSTITUTE CLAMPS MADE OF...  
HIGHER CORROSION RESISTANT MATERIALS TO FILL ORDERS.

NOTE: PRELIMINARY SPECIFICATION  
SUBJECT TO CHANGE W/O NOTICE



TITLE: EMBOSSED BAND WITH  
TRACKING SCREW

DRAWN BY: RFF REV:

DATE: 11/12/2013 P/N: EBTxxxWm