



rtc[®]

QUICK CONNECT TECHNOLOGY
www.rtc-tec.com



103

rtc TYPE



Temperature Range - Temperaturbereich
 -20°C +100°C (-4°F +212°F) Nitril (N)
 -10°C +180°C (+14°F +356°F) FPM (V)

Max. Working Pressure - Max. Betriebsdruck
 rtc 103.07 500 bar (7250 PSI)
 rtc 103.08 450 bar (6525 PSI)
 rtc 103.11 450 bar (5075 PSI)
 rtc 103.12 400 bar (5075 PSI)
 rtc 103.15 400 bar (5075 PSI)
 rtc 103.19 400 bar (5075 PSI)

Flow size - Nennweiten
 rtc 103.07 8 mm
 rtc 103.08 10 mm
 rtc 103.11 11 mm
 rtc 103.12 12 mm
 rtc 103.15 15 mm
 rtc 103.19 19 mm

Material
 Coupler Body - AISI 420 / AISI 303 stainless steel -
 Kupplungsgrundkörper - Edelstahl
 Sleeve - Hülse - Hardened alloy steel - Gehärteter Stahl
 Valve - Ventil - Stainless steel - Edelstahl
 Springs - Federn - Stainless steel - Edelstahl
 Seal - Dichtung - FPM (V)
 Balls - Kugeln - Stainless steel - Edelstahl
 Plug - Nippel - AISI 420 hardened stainless steel -
 Gehärteter Edelstahl

Max. Working pressure / Max. Arbeitsdruck (bar)

Size / Größe	07	08	11	12	15	19
Connected	500	450	450	400	400	400
Disconnected	180	180	180	180	180	180

**Max. Residual pressure for connection under pressure (bar)
 Max. Restdruck für die Verbindung unter Druck (bar)**

Coupling / Kupplung	150	150	150	150	150	150
Plug / Nippel	50	50	50	50	50	50

Options - Optionen

- N** NBR Seal - NBR Dichtung
- RED** Red Body - Grundkörper rot
- P** Pressure release valf - Druckentlastungsventil

Using Area

- On hydraulic oil circuits
- Hydraulic test units
- Injection moulding industries / core pullers

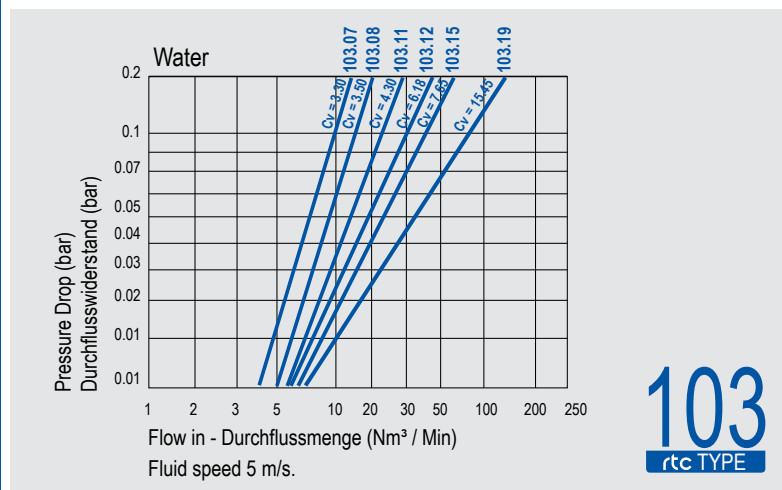
Anwendungsbereiche

- Hydraulische Verbindungen
- Hydraulik Prüfstände
- Kunststoffindustrie / Kernzüge

NEW
Safety type coupler for disconnect protection
Sicherheitsfunktion für das ungewollte Trennen



Flow Rate vs Pressure Drop Graph / Durchflussrate vs Druckabfall

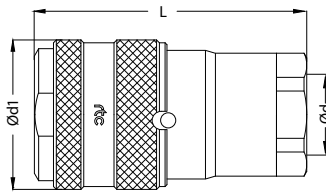


rtc TYPE 103

Female thread socket / Kupplung mit Innengewinde



Socket / Kupplung



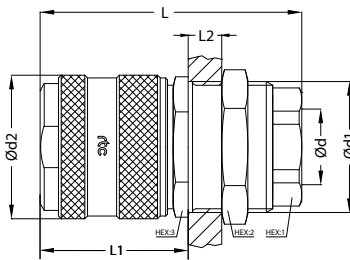
Size Größe	Order No / Bestellnr.	Ød	Ød1	L	HEX.
07	103.07 SFB 17	BSP 3/8	31.5	57.5	25
08	103.08 SFB 21	BSP 1/2	40	72	30
11	103.11 SFB 21	BSP 1/2	40	72	30
12	103.12 SFB 26	BSP 3/4	50	89	41
15	103.15 SFB 26	BSP 3/4	50	89	41
19	103.19 SFB 33	BSP 1	64.5	119	55

rtc TYPE 103

Panel mounted female thread socket / Kupplung mit Innengewinde und Schottverschraubung



Socket / Kupplung

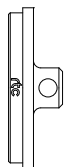


Size Größe	Order No / Bestellnr.	Ød	Ød1	Ød2	L	L1	L2	HEX.1	HEX.2	HEX.3
07	103.07 SFBP 17	BSP 3/8	M30x1	31.5	57.5	39	8	25	34	32
08	103.08 SFBP 21	BSP 1/2	M34x1	40	72	42	13	30	38	36
11	103.11 SFBP 21	BSP 1/2	M34x1	40	72	42	13	30	38	36
12	103.12 SFBP 26	BSP 3/4	M44x1.5	50	89	48	22	41	54	52
15	103.15 SFBP 26	BSP 3/4	M44x1.5	50	89	48	22	41	54	52

rtc TYPE 103

Dust cup for socket / Staubkappe für Kupplung

Dust Cup / Staubkappe

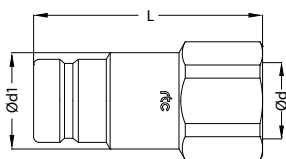


Size Größe	Order No / Bestellnr.
07	103.07 SD 00
08	103.08 SD 00
11	103.08 SD 00
12	103.12 SD 00
15	103.12 SD 00
19	103.19 SD 00



Female thread plug / Nippel mit Innengewinde

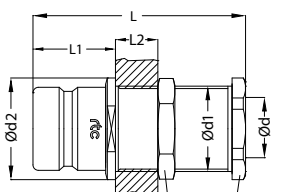
TYPE 103 

Plugs / Nippel	Size Größe	Order No / Bestellnr.	Ød	Ød1	L	HEX.
	07	103.07 PFB 17	BSP 3/8	21.5	49.3	22
	08	103.08 PFB 21	BSP 1/2	32.5	63	30
	11	103.11 PFB 21	BSP 1/2	32.5	63	30
	12	103.12 PFB 26	BSP 3/4	44.5	74	41
	15	103.15 PFB 26	BSP 3/4	44.5	74	41
	19	103.19 PFB 33	BSP 1	44.8	90	45



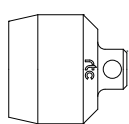
Panel mounted female thread plug / Nippel mit Innengewinde und Schottverschraubung

TYPE 103 

Plugs / Nippel	Size Größe	Order No / Bestellnr.	Ød	Ød1	Ød2	L	L1	L2	HEX.1	HEX.2
	07	103.07 PFBP 17	BSP 3/8	M22x1	30	49.3	21	15	22	24
	08	103.08 PFBP 21	BSP 1/2	M26x1	36	63	24.5	25.5	30	32
	11	103.11 PFBP 21	BSP 1/2	M26x1	36	63	24.5	25.5	30	32
	12	103.12 PFBP 26	BSP 3/4	M34x1	41	74	30	25	41	38
	15	103.15 PFBP 26	BSP 3/4	M34x1	41	74	30	25	41	38

Dust cup for plug / Staubkappe für Nippel

TYPE 103 

Dust Cup / Staubkappe	Size Größe	Order No / Bestellnr.
	07	103.07 PD 00
	08	103.08 PD 00
	11	103.08 PD 00
	12	103.12 PD 00
	15	103.12 PD 00
	19	103.19 PD 00