

rtc[®]

QUICK CONNECT TECHNOLOGY
www.rtc-tec.com



106

rtc TYPE



Temperature Range - Temperaturbereich
-20°C +100°C (-4°F +212°F) Nitril (N)

Working Pressure - Betriebsdruck

rtc 106.25	10 bar (145 PSI)
rtc 106.33	10 bar (145 PSI)
rtc 106.42	10 bar (145 PSI)
rtc 106.50	10 bar (145 PSI)
rtc 106.63	10 bar (145 PSI)
rtc 106.110	10 bar (145 PSI)

Flow size - Nennweiten

rtc 106.25	25 mm
rtc 106.33	33 mm
rtc 106.42	42 mm
rtc 106.50	50 mm
rtc 106.63	63 mm
rtc 106.110	110 mm

Material

Socket Body- Kupplungsgrundkörper	Brass chrome plated - Messing verchromt
Sleeve - Hülse	Brass chrome plated - Messing verchromt
Springs - Federn	Stainless Steel - Edelstahl
Locking O-Ring- Sprengling	Stainless Steel - Edelstahl Edelstahl
Balls - Kugeln	Stainless Steel - Edelstahl
Seals - Dichtungen	Nitrile
Plug - Nippel	AISI 420 hardened - AISI 420 gehärtet

Standard version - Standardversion

Brass - Messing
NBR (N)

Options - Optionen

Stainless Steel - Edelstahl

Using Area

- On temperature regulation applications with hot or cold water, oil etc.
- Injection moulding industries.
- On steam line
- Suction coupling for material conveying (Plastic Granule Carrier Coupling)
- Full flow passage

Anwendungsbereiche

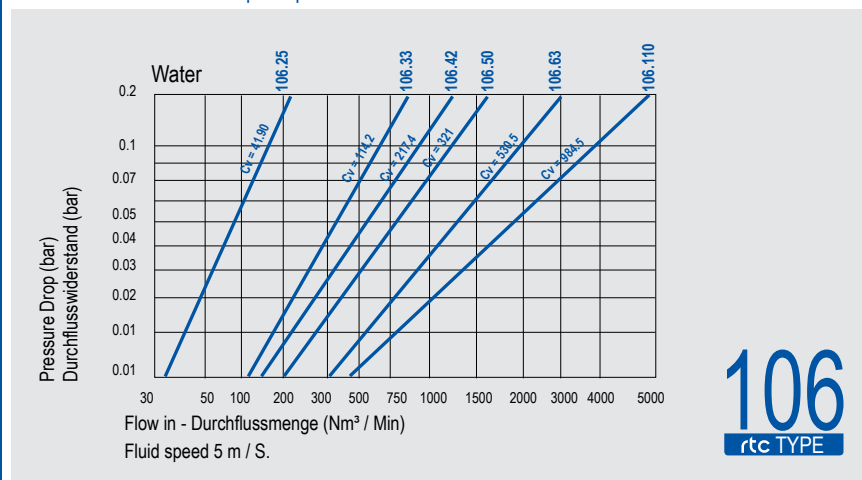
- Zuleitung für die Temperierung / Druckluft
- Kühlung mit Öl oder Wasser
- Kunststoffindustrie
- Dampfanwendungen
- Kupplung für Materialbeförderung (Kunststoffgranulat)
- Voller Durchgang

Material of 106.110

Socket Body- Kupplungsgrundkörper	Aluminium
Sleeve - Hülse	Aluminium
Plug - Nippel	Aluminium



Flow Rate vs Pressure Drop Graph / Durchflussrate vs Druckabfall

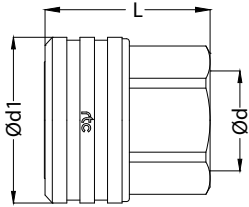


rtc TYPE 106

Cylindrical female thread socket / Kupplung mit Innengewinde zylindrisch



Socket / Kupplung



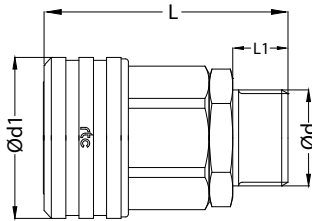
Size Größe	Order No / Bestellnr.	Ød	Ød1	L	HEX.
25	106.25 SFF 33	BSP 1	57	57	41
33	106.33 SFF 42	BSP 1-1/4	65	62	50
42	106.42 SFF 48	BSP 1-1/2	78	66	60
50	106.50 SFF 60	BSP 2	89	70	70
63	106.63 SFF 75	BSP 2-1/2	109	84	90
110	106.110 SFF 113	BSP 4	180	175	-

rtc TYPE 106

Standard hose tail socket / Kupplung mit gerader Standard - Schlauchtülle



Plug / Nippel



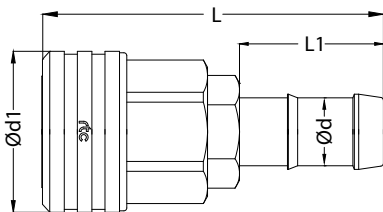
Size Größe	Order No / Bestellnr.	Ød	Ød1	L	L1	HEX.
25	106.25 SFF 33	BSP 1	57	84	19	41
33	106.33 SFF 42	BSP 1-1/4	64	91	19	50
42	106.42 SFF 48	BSP 1-1/2	78	98	20	60
50	106.50 SFF 60	BSP 2	89	110	25	70
63	106.63 SFF 75	BSP 2-1/2	109	131	27	90

rtc TYPE 106

Standard hose tail socket / Kupplung mit gerader Standard - Schlauchtülle



Socket / Kupplung

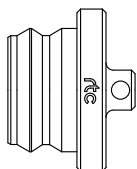


Size Größe	Order No / Bestellnr.	Ød	Ød1	L	L1	HEX.
25	106.25 SHF 25 HT8	25	57	118	50	41
33	106.33 SHF 32 HT8	32	64	123	50	50
42	106.42 SHF 44 HT8	44	78	127	50	60
50	106.50 SHF 52 HT8	52	89	134	50	70
63	106.63 SHF 63 HT8	63	109	179	75	90

rtc TYPE 106

Dust cup for socket / Staubkappe für Kupplung

Dust cup / Staubkappe



Size Größe	Order No / Bestellnr.
25	106.25 SD 00
33	106.33 SD 00
42	106.42 SD 00
50	106.50 SD 00
63	106.63 SD 00
110	106.110 SD 00



Cylindrical female thread plug / Nippel mit Innengewinde zylindrisch

TYPE 106 **rtc**

Plug / Nippel	Size Größe	Order No / Bestellnr.	Ød	Ød1	L	HEX.
	25	106.25 PFF 33	BSP 1	45	61	41
	33	106.33 PFF 42	BSP 1-1/4	55	66	50
	42	106.42 PFF 48	BSP 1-1/2	65	74	60
	50	106.50 PFF 60	BSP 2	75	78	71
	63	106.63 PFF 75	BSP 2-1/2	90	83	84
	110	106.110 PFF 113	BSP 4	150	155	-



Cylindrical male thread plug / Nippel mit Ausengewinde zylindrisch

TYPE 106 **rtc**

Plug / Nippel	Size Größe	Order No / Bestellnr.	Ød	Ød1	L	L1	HEX.
	25	106.25 PMF 33	BSP 1	45	88	19	41
	33	106.33 PMF 42	BSP 1-1/4	55	95	19	50
	42	106.42 PMF 48	BSP 1-1/2	65	106	20	60
	50	106.50 PMF 60	BSP 2	75	118	25	71
	63	106.63 PMF 75	BSP 2-1/2	90	130	27	84



Cylindrical male thread plug / Nippel mit Ausengewinde zylindrisch

TYPE 106 **rtc**

Socket / Kupplung	Size Größe	Order No / Bestellnr.	Ød	Ød1	L	L1	HEX.
	25	106.25 PHF 25 HT8	25	45	122	50	41
	33	106.33 PHF 32 HT8	32	55	127	50	50
	42	106.42 PHF 44 HT8	44	65	135	50	60
	50	106.50 PHF 52 HT8	52	75	139	50	71
	63	106.63 PHF 63 HT8	63	90	178	75	84

