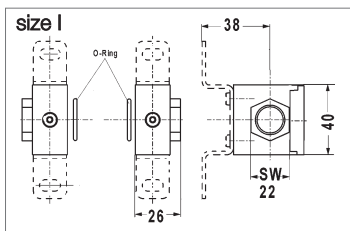


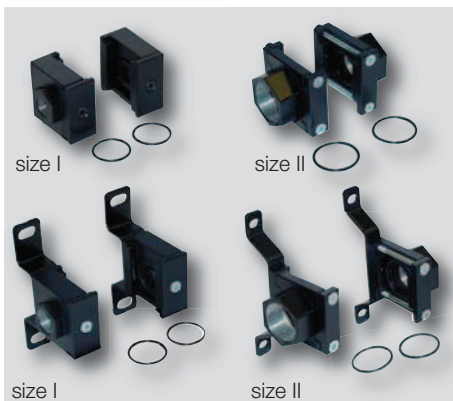
## Middle modules for block mounting, mounting set for the piping

"Plug and Work" - this is the motto where you can choose your preferred combination from the variety for block mounting, for piping (inlet and outlet) and wall mounting.



### Thread mounting plates set

For the piping. Self-adhesive seals. With or without T-bracket for wall mounting.

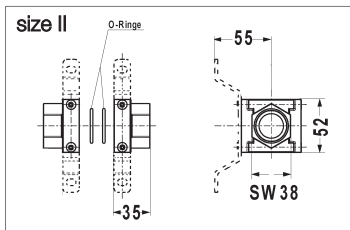


#### Without T-bracket

Size	Connection threads	Order No.
I	G 1/4	480-75
	G 3/8	480-37
II	G 1/2	480-283
	G 3/4	480-282
	G1	480-271

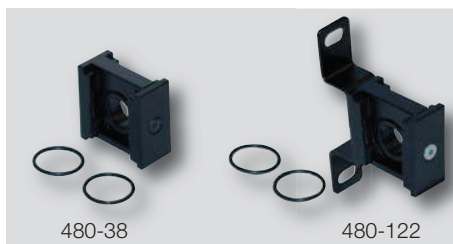
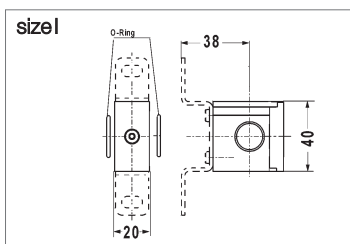
#### With T-bracket

Size	Connection threads	Order No.
I	G 1/4	480-120
	G 3/8	480-121
II	G 1/2	480-287
	G 3/4	480-288
	G1	480-289



### Comfort connection set (middle module)

For block mounting. Individual modules can be easily removed without having to remove the entire unit. Self-adhesive seals. With or without T-bracket for wall mounting.



#### Without T-bracket

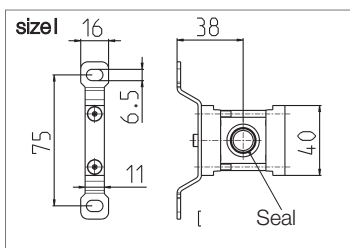
Size	Connection threads	Order No.
I	G 1/4	480-38
	G 3/8	

#### With T-bracket

Size	Connection threads	Order No.
I	G 1/4	480-122
	G 3/8	

### Compact connection set (middle module)

For block mounting. Sealing set included. With or without T-bracket for wall mounting.



#### Without T-bracket

Size	Connection threads	Order No.
I	G 1/4	480-570
	G 3/8	480-360
II	G 1/2	480-238
	G 3/4	480-237

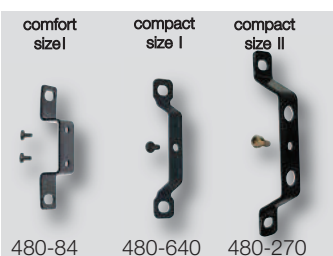
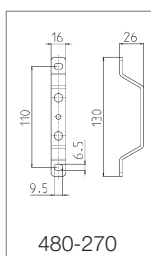
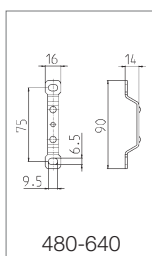
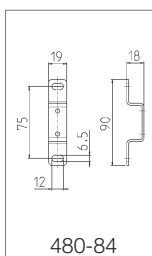
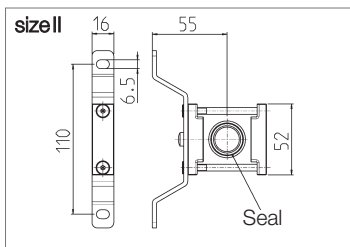
#### With T-bracket

Size	Connection threads	Order No.
I	G 1/4	480-560
	G 3/8	480-350
II	G 1/2	480-264
	G 3/4	480-265

#### Sealing set for compact connection set

Sleeve + o-ring.

Size	Connection threads	Order No.
I	G 1/4	480-85
	G 3/8	480-11
II	G 1/2	480-267
	G 3/4	480-268



### T-bracket (single)

For wall mounting.

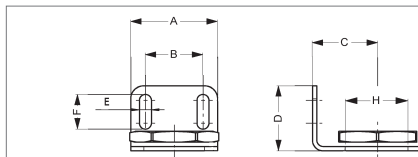
Suitable for middle module...	Size	Order No.
Comfort connection	I	480-84
Compact connection	I	480-640
	II	480-270

## Wall fasteners

### Bracket-set for mounting on cap (handwheel thread)

Content: Bracket + nut.

Suitable for	Order No.
size I	443-36
size II	443-104



Dimensions (mm)							
size	A	B	C	D	E	F	H
I	40	26,5	30	30	5,5	16	30,5
II	55	35	42,5	40	7	20	43



### Nut (single)

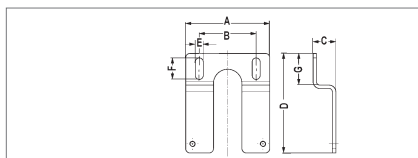
For mounting on control panel.

Suitable for	Dimensions	Material	Order No.
size I	M30x1,5	PA6	381-32
size II	M42x1,5	Ms	443-106

### Bracket-set for mounting on unit body

Content: Bracket + 2 screws.

Suitable for	Order No.
size I	480-67
size II	480-252



Dimensions (mm)							
Size	A	B	C	D	E	F	G
I	50	34	15	71	5,5	16	25
II	74	50	20	88	7	19	28

### Screw set (2 pieces)

For direct mounting of single units.

Suitable for	Dimensions	Order No.
size I	2 x M4x40	480-83
size II	2 x M5x60	480-266