



rtc[®]

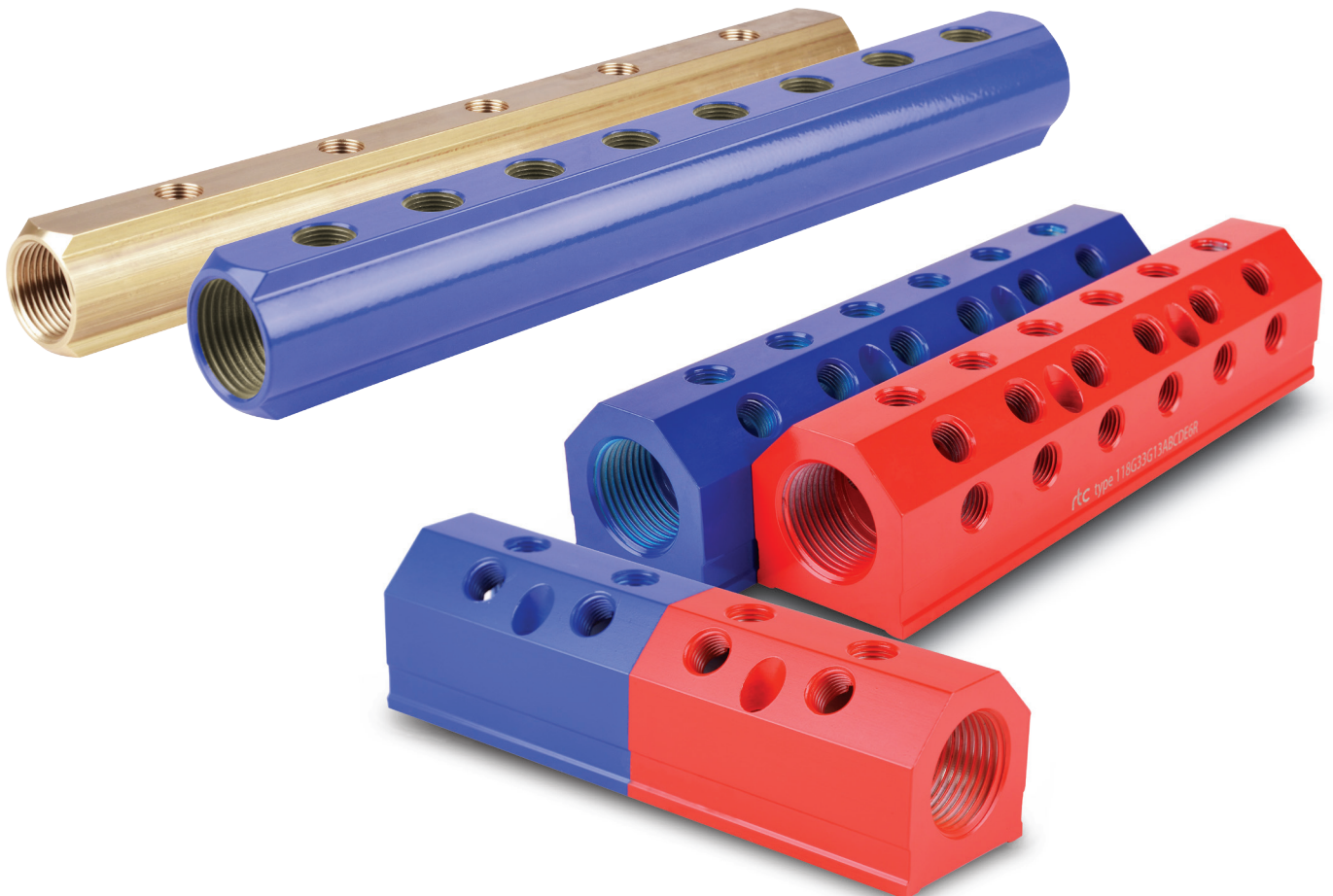
QUICK CONNECT TECHNOLOGY
www.rtc-tec.com

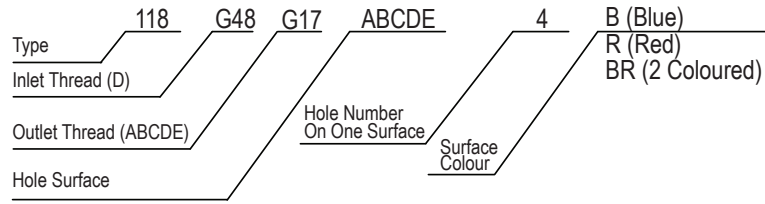
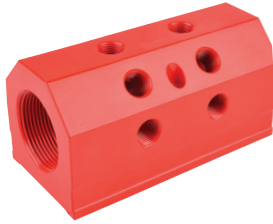


COLLECTORS

117-118

rtc TYPE





Thread Size Explanations
 BSPP=G
 NPT=N
 (1/4 = 13)
 (3/8 = 17)
 (1/2 = 21)
 (3/4 = 26)
 (1" = 33)
 (1-1/4 = 42)
 (1-1/2 = 48)
 (2" = 60)

T Inlet Thread	d Outlet Thread	Number of Holes on one Surface	L	L1	L2	L3	H
1	1/4	2	103	0	38	40	60
	1/4 & 3/8	4	183	63.5			
		6	263	127			
		8	343	190.5			
1-1/2	3/8	2	152	0	57	51	76
	3/8 & 1/2	4	254	101.6			
		6	355	203.2			
		8	457	304.8			
2	1/2	2	203	0	72.5	63.5	89
	1/2 & 3/4	4	305	127			
		6	432	254			
		8	559	381			

