

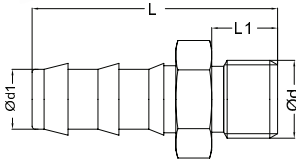
rtc TYPE MHN

Male thread Push to connect hose connect / Aussengewinde Schnellsteck Schlauchtülle



Adapter / Nippel

Material: MS 58 (Brass) - Messing
Plate: Nickel



Order No / Bestellnr.	Ød	Ød1	L	L1	HEX.
MHN 10-06 HT-1	BSP 1/8	6	39	7	14
MHN 10-10 HT-1	BSP 1/8	10	39	7	14
MHN 13-06 HT-1	BSP 1/4	6	39	9	17
MHN 13-10 HT-1	BSP 1/4	10	39	9	17
MHN 13-13 HT-1	BSP 1/4	13	39	9	17
MHN 17-10 HT-1	BSP 3/8	10	39	9	19
MHN 17-13 HT-1	BSP 3/8	13	43	9	19
MHN 21-10 HT-1	BSP 1/2	10	43	10	22
MHN 21-13 HT-1	BSP 1/2	13	43	10	22
MHN 21-16 HT-1	BSP 1/2	16	58	10	22
MHN 26-16 HT-1	BSP 3/4	16	62	16	27
MHN 26-19 HT-1	BSP 3/4	19	62	16	27
MHN 33-19 HT-1	BSP 1	19	69	19	35
MHN 1010-10 HT-1	M10x1	10	39	7	11
MHN 1415-13 HT-1	M14x1.5	13	39	9	15

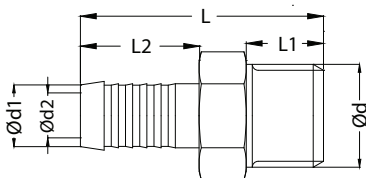
rtc TYPE MHN

Male thread hose connect / Aussengewinde Schlauchtülle



Adapter / Nippel

Material: MS 58 (Brass) - Messing
Plate: Nickel



Order No / Bestellnr.	Ød	Ød1	Ød2	L	L1	L2	HEX.
MHN 10-09 HT-2	BSP 1/8	9	6	33.5	7	22.5	11
MHN 13-09 HT-2	BSP 1/4	9	6	37.5	9	25	15
MHN 13-13 HT-2	BSP 1/4	13	8	40	9	22.5	15
MHN 17-09 HT-2	BSP 3/8	9	6	37.5	9	25	17
MHN 17-13 HT-2	BSP 3/8	13	9	40	9	25	17
MHN 21-19 HT-2	BSP 1/2	19	13	50	12	35	22
MHN 26-19 HT-2	BSP 3/4	19	13	56	16	35	27
MHN 1010-09 HT-2	M10x1	9	6	33.5	9	22.5	11
MHN 1215-13 HT-2	M12x1.5	13	7	40	9	25	15
MHN 1415-13 HT-2	M14x1.5	13	9	40	9	25	15
MHN 1615-13 HT-2	M16x1.5	13	9	40	9	25	17
MHN 2415-19 HT-2	M24x1.5	19	13	56	16	35	27

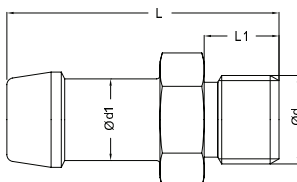
rtc TYPE MHN

Male thread hose connect / Aussengewinde Schlauchtülle



Adapter / Nippel

Material: MS 58 (Brass) - Messing
Plate: Nickel



Order No / Bestellnr.	Ød	Ød1	L	L1	HEX.
MHN 10-04 HT6	BSP 1/8	4	38	8	14
MHN 10-06 HT6	BSP 1/8	6	38	8	14
MHN 10-08 HT6	BSP 1/8	8	43	8	14
MHN 10-10 HT6	BSP 1/8	10	43	8	14
MHN 13-06 HT6	BSP 1/4	6	41	11	17
MHN 13-08 HT6	BSP 1/4	8	46	11	17
MHN 13-09 HT6	BSP 1/4	9	46	11	17
MHN 13-10 HT6	BSP 1/4	10	46	11	17
MHN 13-13 HT6	BSP 1/4	13	51	11	17
MHN 17-08 HT6	BSP 3/8	8	47	12	19
MHN 17-10 HT6	BSP 3/8	10	47	12	19
MHN 17-13 HT6	BSP 3/8	13	52	12	19
MHN 17-16 HT6	BSP 3/8	16	52	12	18
MHN 21-13 HT6	BSP 1/2	13	54	14	23
MHN 21-16 HT6	BSP 1/2	16	54	14	23
MHN 26-16 HT6	BSP 3/4	16	58	16	23

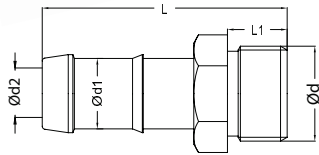


Male thread hose connect / Aussengewinde Schlauchtülle

TYPE MHN **rtc**

Adapter / Nippel

Material: Steel - Stahl
Plate: Zinc



Order No / Bestellnr.	Ød	Ød1	Ød2	L	L1	HEX.
MHN 17-13 HT-8	BSP 3/8	13	9	59	12	19
MHN 17-16 HT-8	BSP 3/8	16	11	59	12	23
MHN 21-13 HT-8	BSP 1/2	13	9	61	14	23
MHN 21-16 HT-8	BSP 1/2	16	11	61	14	23
MHN 21-19 HT-8	BSP 1/3	19	11	61	14	23
MHN 26-19 HT-8	BSP 3/4	19	15	65	16	29
MHN 26-25 HT-8	BSP 3/4	25	19	80	16	35
MHN 33-19 HT-8	BSP 1	19	15	84	20	35
MHN 33-25 HT-8	BSP 1	25	19	84	20	35

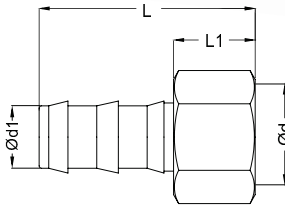


Female thread Push to connect hose connect / Innengewinde Schnellsteck Schlauchtülle

TYPE FHN **rtc**

Adapter / Nippel

Material: MS 58 (Brass) - Messing
Plate: Nickel



Order No / Bestellnr.	Ød	Ød1	L	L1	HEX.
FHN 10-06 HT-1	BSP 1/8	6	36	12	14
FHN 10-10 HT-1	BSP 1/8	10	36	12	14
FHN 13-06 HT-1	BSP 1/4	6	40	16	17
FHN 13-10 HT-1	BSP 1/4	10	40	16	17
FHN 13-13 HT-1	BSP 1/4	13	44	16	17
FHN 17-10 HT-1	BSP 3/8	10	40	16	20
FHN 17-13 HT-1	BSP 3/8	13	44	16	20
FHN 21-10 HT-1	BSP 1/2	10	41	17	24
FHN 21-13 HT-1	BSP 1/2	13	45	17	24
FHN 21-16 HT-1	BSP 1/2	16	55	17	24
FHN 26-16 HT-1	BSP 3/4	16	67	19	30
FHN 26-19 HT-1	BSP 3/4	19	67	19	30
FHN 1010-10 HT-1	M10x1	10	36	12	14
FHN 1415-13 HT-1	M14x1.5	13	40	16	17

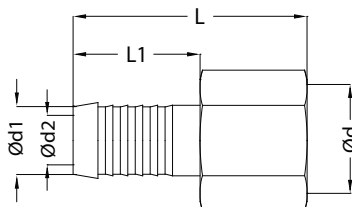
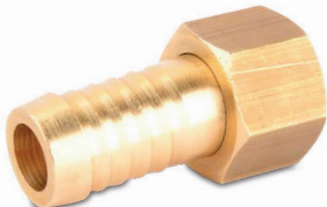


Female thread Push to connect hose connect / Innengewinde Schnellsteck Schlauchtülle

TYPE FHN **rtc**

Adapter / Nippel

Material: MS 58 (Brass) - Messing



Order No / Bestellnr.	Ød	Ød1	Ød2	L	L1	HEX.
FHN 10-06 HT2	BSP 1/8	6	4.5	28	17	12
FHN 10-08 HT2	BSP 1/8	8	6.5	28	17	12
FHN 13-06 HT2	BSP 1/4	6	4.5	28.5	17	17
FHN 13-08 HT2	BSP 1/4	8	6.5	28.5	17	17
FHN 13-10 HT2	BSP 1/4	10	8	34	22.5	17
FHN 13-13 HT2	BSP 1/4	13	10	37	25	17
FHN 17-08 HT2	BSP 3/8	8	6.5	30	17	19
FHN 17-10 HT2	BSP 3/8	10	8	35	22.5	19
FHN 17-13 HT2	BSP 3/8	13	10	38	25	19
FHN 21-10 HT2	BSP 1/2	10	8	38	22.5	24
FHN 21-13 HT2	BSP 1/2	13	10	41	25	24
FHN 21-16 HT2	BSP 1/2	16	13	41	25	24
FHN 26-16 HT2	BSP 3/4	16	13	41	25	30
FHN 26-19 HT2	BSP 3/4	19	16	48	32	30
FHN 1415-09 HT2	M14x1.5	9	7	36	22.5	17
FHN 1415-13 HT2	M14x1.5	13	10	38.5	25	17
FHN 1615-09 HT2	M16x1.5	9	7	36	22.5	19
FHN 1615-13 HT2	M16x1.5	13	10	38.5	25	19
FHN 2415-19 HT2	M24x1.5	19	15	55	32	30

rtc TYPE SPN

Female thread swivel adapter nipple / Nippel mit Innengewinde Schwenkadapter

Adapter / Nippel

Size
Größe

Order No / Bestellnr.

Ød

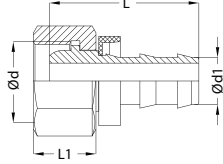
Ød1

L

L1

HEX.

Material: Steel - Stahl
Plate: Zinc



Size Größe	Order No / Bestellnr.	Ød	Ød1	L	L1	HEX.
6	SPN 1215-06	M12x1.5	1/4 - 6.3	33	14.5	14
6	SPN 1415-06	M14x1.5	1/4 - 6.3	33	14.5	17
10	SPN 1615-10	M16x1.5	3/8 - 9.5	38	15.5	19
10	SPN 1815-10	M18x1.5	3/8 - 9.5	38	15.5	22
12	SPN 2215-13	M22x1.5	1/2 - 12.7	42	17	27
16	SPN 2615-16	M26x1.5	5/8 - 15.9	53	18	32
20	SPN 3020-19	M30x2.0	3/4 - 19.1	53	20	36
25	SPN 3620-25	M36x2.0	1 - 25.4	58	21	41

rtc TYPE SPN

Female thread swivel adapter nipple 90° / Nippel mit Innengewinde Schwenkadapter 90°

Adapter / Nippel

Size
Größe

Order No / Bestellnr.

Ød

Ød1

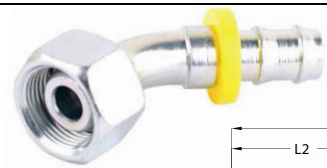
L

L1

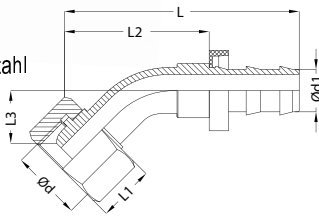
L2

L3

HEX.



Material: Steel - Stahl
Plate: Zinc



Size Größe	Order No / Bestellnr.	Ød	Ød1	L	L1	L2	L3	HEX.
6	SPN 1215-06-45	M12x1.5	1/4 - 6.3	51	14.5	32	16	14
6	SPN 1415-06-45	M14x1.5	1/4 - 6.3	51	14.5	32	16	17
10	SPN 1615-10-45	M16x1.5	3/8 - 9.5	58	15.5	35	18	19
10	SPN 1815-10-45	M18x1.5	3/8 - 9.5	59	15.5	36	18	22
12	SPN 2215-13-45	M22x1.5	1/2 - 12.7	68	17	45	19	27
16	SPN 2615-16-45	M26x1.5	5/8 - 15.9	81	18	45	21	32
20	SPN 3020-19-45	M30x2.0	3/4 - 19.1	89	20	52	23	36
25	SPN 3620-25-45	M36x2.0	1 - 25.4	105	21	67	30	41

rtc TYPE SPN

Female thread swivel adapter nipple 90° / Nippel mit Innengewinde Schwenkadapter 90°

Adapter / Nippel

Size
Größe

Order No / Bestellnr.

Ød

Ød1

L

L1

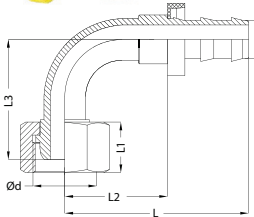
L2

L3

HEX.



Material: Steel - Stahl
Plate: Zinc



Size Größe	Order No / Bestellnr.	Ød	Ød1	L	L1	L2	L3	HEX.
6	SPN 1215-06-90	M12x1.5	1/4 - 6.3	33	14.5	23	29	14
6	SPN 1415-06-90	M14x1.5	1/4 - 6.3	33	14.5	23	29	17
10	SPN 1615-10-90	M16x1.5	3/8 - 9.5	38	15.5	27	31	19
10	SPN 1815-10-90	M18x1.5	3/8 - 9.5	38	15.5	27	34	22
12	SPN 2215-13-90	M22x1.5	1/2 - 12.7	42	17	34	39	27
16	SPN 2615-16-90	M26x1.5	5/8 - 15.9	53	18	37	43	32
20	SPN 3020-19-90	M30x2.0	3/4 - 19.1	53	20	51	50	36
25	SPN 3620-25-90	M36x2.0	1 - 25.4	58	21	61	70	41

rtc TYPE MRN

Male Metric with inner cone 60° to BSPT adapter - Verschraubung Metrisch Innenkonus 60°/ BSPT Aussengewinde

Adapter / Nippel

Order No / Bestellnr.

Ød

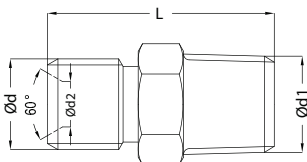
Ød1

Ød2

L

HEX.

Material: Steel - Stahl
Plate: Zinc

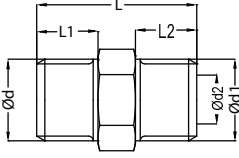



Order No / Bestellnr.	Ød	Ød1	Ød2	L	HEX.
MRN 10-1210-06	M12x1.0	BSPT 1/8	6	21	14
MRN 13-1210-06	M12x1.0	BSPT 1/4	6	26	14
MRN 10-1215-06	M12x1.5	BSPT 1/8	6	26	14
MRN 13-1215-06	M12x1.5	BSPT 1/4	6	30	14
MRN 17-1415-08	M14x1.5	BSPT 1/4	8	30	17
MRN 17-1415-08	M14x1.5	BSPT 3/8	8	30	19
MRN 17-1615-10	M16x1.5	BSPT 3/8	10	30	19
MRN 21-1615-10	M16x1.5	BSPT 1/2	10	33	24
MRN 17-1815-12	M18x1.5	BSPT 3/8	12	31	19
MRN 21-1815-12	M18x1.5	BSPT 1/2	12	38	24
MRN 17-2215-15	M22x1.5	BSPT 3/8	15	33	24
MRN 21-2215-15	M22x1.5	BSPT 1/2	15	35	24
MRN 26-2615-18	M26x1.5	BSPT 3/4	18	38	27
MRN 33-3020-22	M30x2.0	BSPT 1	22	54	35
MRN 42-3620-26	M36x2.0	BSPT 1-1/4	26	58	46



Male thread adapters with inner cone DIN 3863 / Aussengewinde Doppelnippel mit Innenkonus DIN 3863


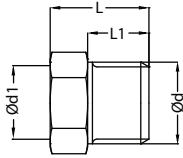
TYPE **MMN** **rtc**

Adapter / Nippel	Order No / Bestellnr.	Ød	Ød1	Ød2	L	L1	L2	HEX.
Material: MS 58 (Brass) - Messing  	MMN 13-13	BSP 1/4	BSP 1/4	6	23	9	9	17
	MMN 17-17	BSP 3/8	BSP 3/8	9	23	9	9	19
	MMN 21-21	BSP 1/2	BSP 1/2	13	30	12	12	22
	MMN 26-26	BSP 3/4	BSP 3/4	13	40	16	16	27
	MMN 13-1415	BSP 1/4	M14x1.5	6	23	9	9	17
	MMN 13-1615	BSP 1/4	M16x1.5	6	23	9	9	19
	MMN 17-1415	BSP 3/8	M14x1.5	8	23	9	9	19
	MMN 17-1615	BSP 3/8	M16x1.5	9	23	9	9	19
	MMN 21-1415	BSP 1/2	M14x1.5	6	30	12	9	22
	MMN 21-1615	BSP 1/2	M16x1.5	9	30	12	9	22
	MMN 21-2415	BSP 1/2	M24x1.5	13	36	16	12	27
	MMN 26-2415	BSP 3/4	M24x1.5	13	40	16	16	27
	MMN 1415-1415	M14x1.5	M14x1.5	6	23	9	9	17
	MMN 1615-1615	M16x1.5	M16x1.5	9	23	9	9	19
	MMN 2415-2415	M24x1.5	M24x1.5	13	40	16	16	27
	MMN 1415-1615	M14x1.5	M16x1.5	9	23	9	9	17
	MMN 1415-1815	M14x1.5	M18x1.5	9	26	12	9	19
	MMN 1615-1815	M16x1.5	M18x1.5	9	26	12	9	19



Male - Female thread adapters / Aussen - Innengewinde Adapter

TYPE **MFN** **rtc**

Adapter / Nippel	Order No / Bestellnr.	Ød	Ød1	L	L1	HEX.
Material: MS 58 (Brass) - Messing  	MFN 13-10	BSP 1/4	BSP 1/8	11	7	17
	MFN 17-13	BSP 3/8	BSP 1/4	13	9	19
	MFN 21-17	BSP 1/2	BSP 3/8	18	12	24
	MFN 26-21	BSP 3/4	BSP 1/2	24	16	27
	MFN 1415-1010	M14x1.5	M10x1	11	7	17
	MFN 1815-1415	M18x1.5	M14x1.5	14	9	21
	MFN 2415-1615	M24x1.5	M16x1.5	24	16	27



Male - Female thread adapters (90°) / Außen - Innengewinde Adapter (90°)

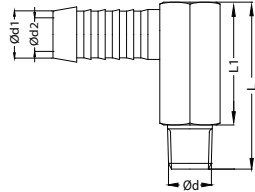
TYPE **ELB** **rtc**

Adapter / Nippel	Order No / Bestellnr.	Ød	Ød1	L	L1	L2	#
Material: MS 58 (Brass) - Messing Plate: Nickel  	ELB 13-10	BSP 1/4	BSP 1/8	25	17	9	15
	ELB 17-13	BSP 3/8	BSP 1/4	27.5	19	9	20
	ELB 21-17	BSP 1/2	BSP 3/8	35	25	15	25



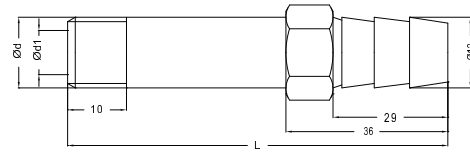
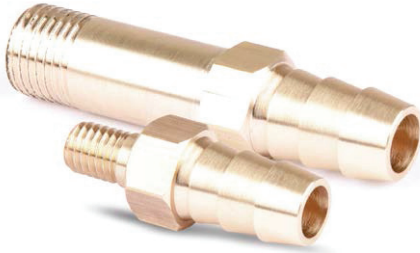
Male - Hose adapters (90°) / Aussengewinde Schauchanschluss Adapter (90°)

TYPE **ELB** **rtc**

Adapter / Nippel	Order No / Bestellnr.	Ød	Ød1	Ød2	L	L1	HEX.
	MHN 10-09 HT-2 90	BSPT 1/8	9	6	27	20	15
	MHN 13-13 HT-2 90	BSPT 1/4	13	9	34	24	17
	MHN 21-19 HT-2 90	BSPT 1/2	19	13	47	32	24
	MHN 0875-09 HT-2 90	M8x0.75	9	4.5	27	20	15
	MHN 1010-09 HT-2 90	M10x1	9	6	27	20	15
	MHN 1415-13 HT-2 90	M14x1.5	13	9	34	24	17
	MHN 2415-19 HT-2 90	M24x1.5	19	13	47	32	24

rtc TYPE SRM / SRG

Extension Plugs / Erweiterung Nippels



Order No / Bestellnr.	Ød	Ød1	L	HEX.
SRM 08 x 38	M 8x1.25	5	38	13
SRM 08 x 60	M 8x1.25	5	60	13
SRM 08 x 80	M 8x1.25	5	80	13
SRM 08 x 100	M 8x1.25	5	100	13
SRM 10 x 38	M 10x1.5	6	38	13
SRM 10 x 60	M 10x1.5	6	60	13
SRM 10 x 80	M 10x1.5	6	80	13
SRM 10 x 100	M 10x1.5	6	100	13
SRM 10 x 120	M 10x1.5	6	120	13
SRM 10 x 150	M 10x1.5	6	150	13
SRM 12 x 38	M 12x1.75	7	38	13
SRM 12 x 60	M 12x1.75	7	60	13
SRM 12 x 80	M 12x1.75	7	80	13
SRM 12 x 100	M 12x1.75	7	100	13
SRM 12 x 120	M 12x1.75	7	120	13
SRM 12 x 150	M 12x1.75	7	150	13
SRM 14 x 38	M 14x2.0	7	38	14

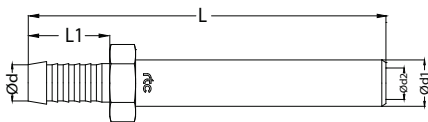
Order No / Bestellnr.	Ød	Ød1	L	HEX.
SRG 10 x 38	BSP 1/8	6	38	13
SRG 10 x 60	BSP 1/8	6	60	13
SRG 10 x 80	BSP 1/8	6	80	13
SRG 10 x 100	BSP 1/8	6	100	13
SRG 10 x 120	BSP 1/8	6	120	13
SRG 10 x 150	BSP 1/8	6	150	13
SRG 13 x 38	BSP 1/4	8	38	14
SRG 13 x 60	BSP 1/4	8	60	14
SRG 13 x 80	BSP 1/4	8	80	14
SRG 13 x 100	BSP 1/4	8	100	14
SRG 13 x 120	BSP 1/4	8	120	14
SRG 13 x 150	BSP 1/4	8	150	14

rtc TYPE FHE

Extension hose stems / Schlauchtülleverlängerung



Adapter / Nippel



Order No / Bestellnr.	Ød	Ød1	Ød2	L	L1	HEX.
FHE 09-120 HT2	10	9	6	120	22.5	12
FHE 13-150 HT2	14	13	9	150	25	15

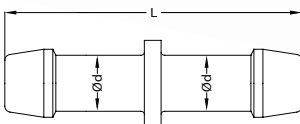
rtc TYPE HHN

Hose to Hose adapter



Adapter / Nippel

Material: MS 58 (Brass) - Messing



Order No / Bestellnr.	Ød	L
HHN 04 HT-6	4 mm	50
HHN 06 HT-6	6 mm	50
HHN 08 HT-6	8 mm	50
HHN 09 HT-6	9 mm	50
HHN 10 HT-6	10 mm	50
HHN 13 HT-6	13 mm	58
HHN 16 HT-6	16 mm	58
HHN 19 HT-6	19 mm	75
HHN 25 HT-6	25 mm	85

rtc TYPE FHNN

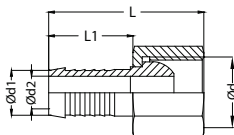
Standard hose connection with outer cone DIN 3863 and hex nut
Standard Schlauchtülle mit Überwurfmutter - Nippel mit Außenkonus DIN 3863



Adapter / Nippel

Material: MS 58 (Brass) - Messing

Plate: Nickel




Order No / Bestellnr.	Ød	Ød1	Ød2	L	L1	HEX.
FHNN 13-09 HT2	BSP 1/4	9	6	40	22.5	17
FHNN 17-13 HT2	BSP 3/8	13	9	41	22.5	21
FHNN 26-19 HT2	BSP 3/4	19	13	52	32	32
FHNN 1415-09 HT2	M14x1.5	9	6	40	22.5	17
FHNN 1615-13 HT2	M16x1.5	13	9	41	22.5	21
FHNN 2415-19 HT2	M24x1.5	19	13	52	32	30



Elbow 90° / Winkel 90°


TYPE **EBFM 90** **rtc**

Adapter / Nippel	Order No / Bestellnr.	Connection / Anschluss	
		Male Aussengewinde	Female Innengewinde
Material: MS 58 (Brass) - Messing 	EBFM 10 - 90	BSP 1/8	BSP 1/8
	EBFM 13 - 90	BSP 1/4	BSP 1/4
	EBFM 17 - 90	BSP 3/8	BSP 3/8
	EBFM 21 - 90	BSP 1/2	BSP 1/2
	EBFM 26 - 90	BSP 3/4	BSP 3/4
	EBFM 33 - 90	BSP 1	BSP 1
	EBFM 42 - 90	BSP 1-1/4	BSP 1-1/4
	EBFM 48 - 90	BSP 1-1/2	BSP 1-1/2
	EBFM 60 - 90	BSP 2	BSP 2




Elbow 45° / Winkel 45°


TYPE **EBFM 45** **rtc**

Adapter / Nippel	Order No / Bestellnr.	Connection / Anschluss	
		Male Aussengewinde	Female Innengewinde
Material: MS 58 (Brass) - Messing 	EBFM 10 - 45	BSP 1/8	BSP 1/8
	EBFM 13 - 45	BSP 1/4	BSP 1/4
	EBFM 17 - 45	BSP 3/8	BSP 3/8
	EBFM 21 - 45	BSP 1/2	BSP 1/2
	EBFM 26 - 45	BSP 3/4	BSP 3/4
	EBFM 33 - 45	BSP 1	BSP 1
	EBFM 42 - 45	BSP 1-1/4	BSP 1-1/4
	EBFM 48 - 45	BSP 1-1/2	BSP 1-1/2
	EBFM 60 - 45	BSP 2	BSP 2

Hose Clamps / Schlauchschellen TYPE **CPW2** **rtc**

Hose Clamps / Schlauchschellen	Order No / Bestellnr.	Hose Outer Diameter Range (mm) / (inch)		Quantity Pack
Material: Screw - DIN 1132 Zinc Plated Steel Housing - AISI 430 (DIN 1.4016 Stainless Steel) Band - AISI 430 (DIN 1.4016 Stainless Steel) 	CPW2 - 1016 - 09	10 - 16	3/8 - 5/8	50
	CPW2 - 1220 - 09	12 - 20	1/2 - 3/4	50
	CPW2 - 1222 - 09	12 - 22	1/2 - 7/8	50
	CPW2 - 1627 - 09	16 - 27	5/8 - 1-1/16	50
	CPW2 - 2032 - 09	20 - 32	3/4 - 1-1/4	50
	CPW2 - 2540 - 09	25 - 40	1 - 1-5/8	50

Hose Clamps / Schlauchschellen TYPE **CPE** **rtc**

Hose Clamps / Schlauchschellen	Order No / Bestellnr.	Hose Diameter (mm)	Quantity Pack
Material: W1 - DIN 1.0330 Mild Steel 	CPE - 1315	13-15	100
	CPE - 1417	14-17	100
	CPE - 1518	15-18	100
	CPE - 1720	17-20	100
	CPE - 1821	18-21	100