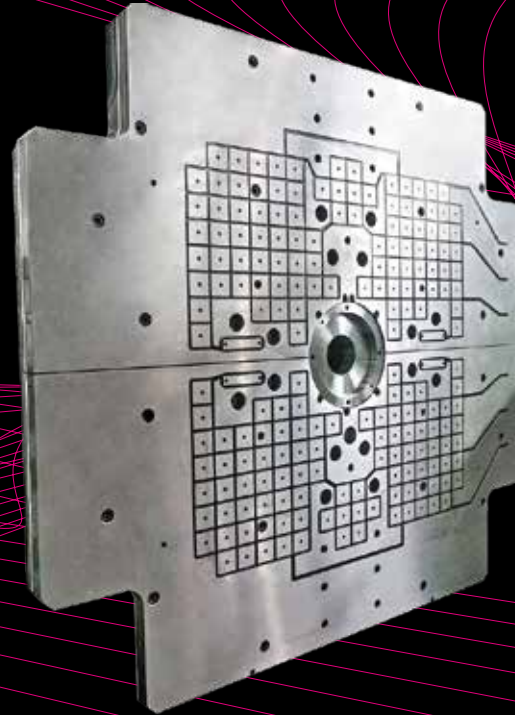
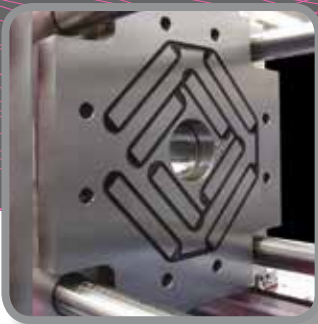
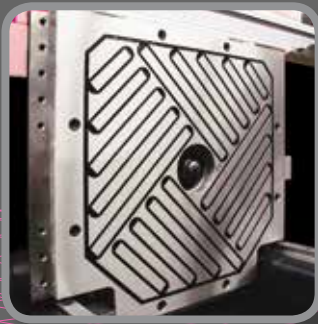
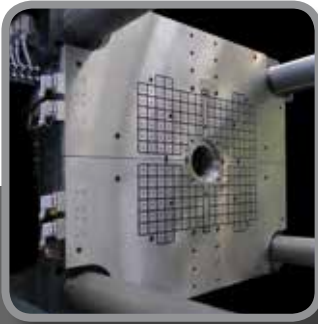




ROEMHELD
HILMA ■ STARK



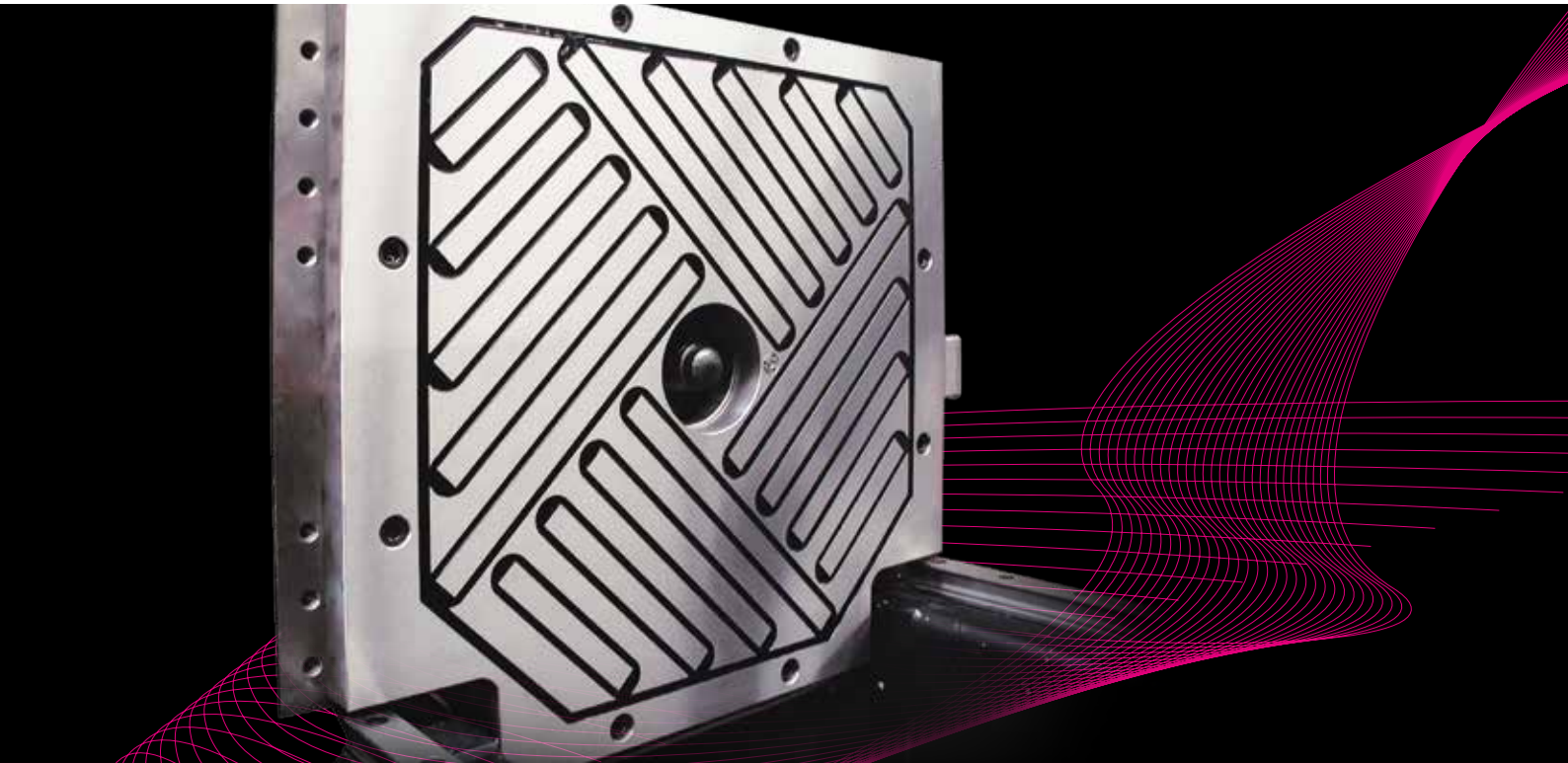
Magnetic Clamping Systems

M-TECS 120-K

for plastics processing

Magnetic Clamping Systems

M-TECS 120-K



Quality and Efficiency

ROEMHELD, HILMA and STARK – the three brands of the ROEMHELD Group stand for productive solutions in industrial production technology, clamping technology, assembly and drive technology. Our components and systems will make your production more efficient and flexible.

Customer benefit of magnetic clamping systems



ROEMHELD
HILMA ■ STARK

QUICK

Moulds are clamped
in one second at the
touch of a button

PROFITABLE

Setup cost optimisation
by mould change
in a few minutes only

FLEXIBLE

Standardisation of moulds
no longer required

ERGONOMIC

Safe mould handling
with ease

RELIABLE

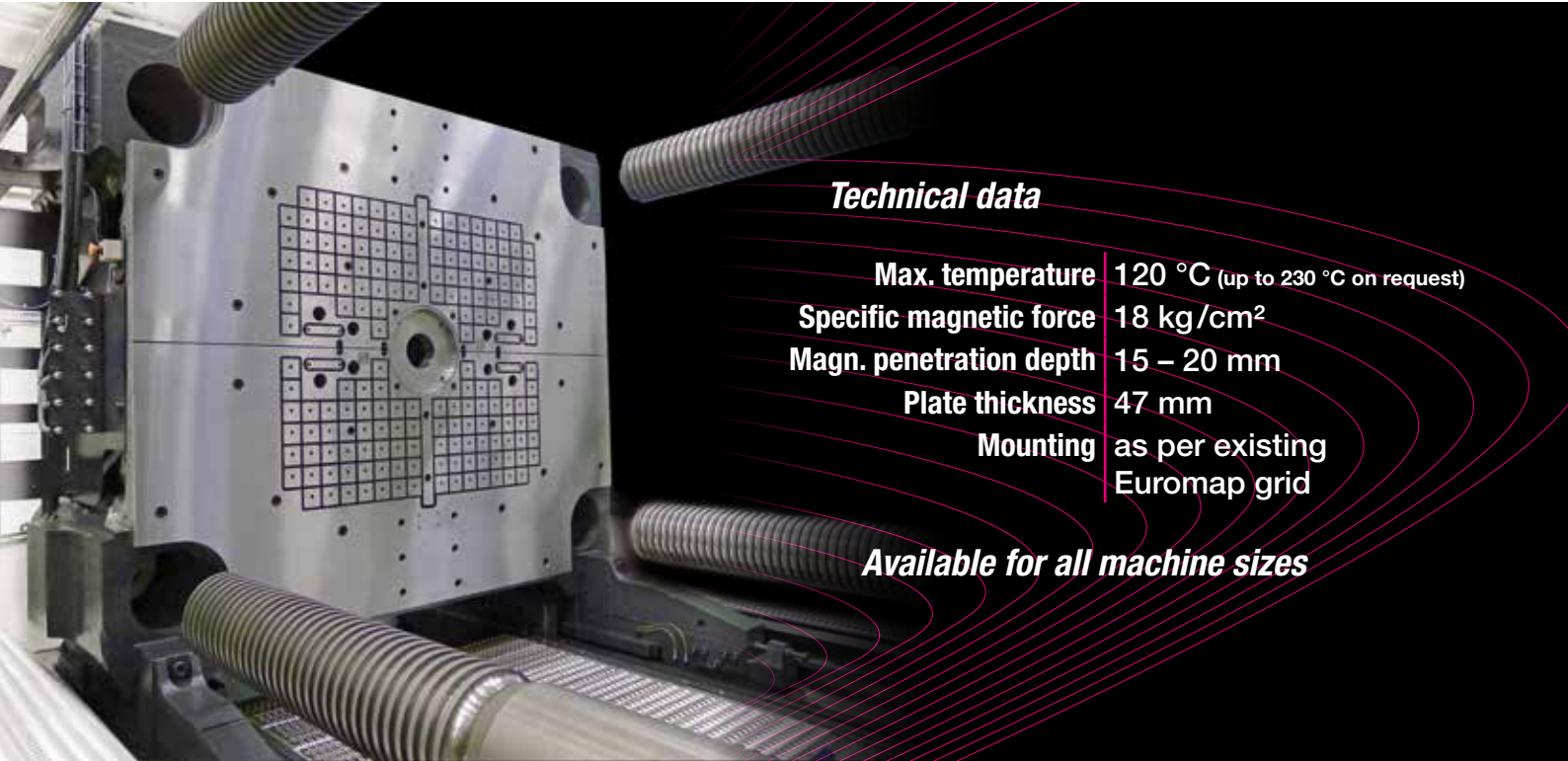
Constant magnetic
clamping force even in
case of a power failure

SAFE

Various sensors monitor
the entire clamping cycle

M-TECS 120-K

for the plastics industry



Technical data

Max. temperature	120 °C (up to 230 °C on request)
Specific magnetic force	18 kg/cm ²
Magn. penetration depth	15 – 20 mm
Plate thickness	47 mm
Mounting	as per existing Euromap grid

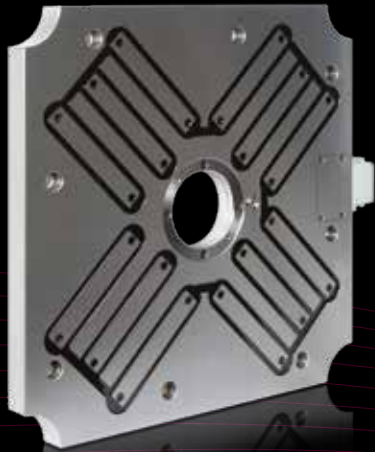
Available for all machine sizes



- **Inductive limit switch**
to identify the mould contact
- **Permanent coil monitoring**
signals minimum mould movement
- **Temperature sensor protects**
the magnetic clamping plates against overheating
- **Force sensor with output on separate**
display or machine panel



Pole technologies

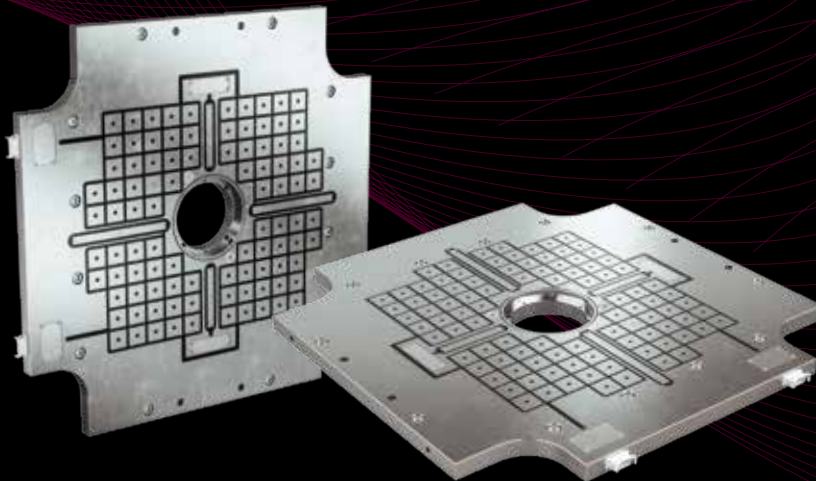
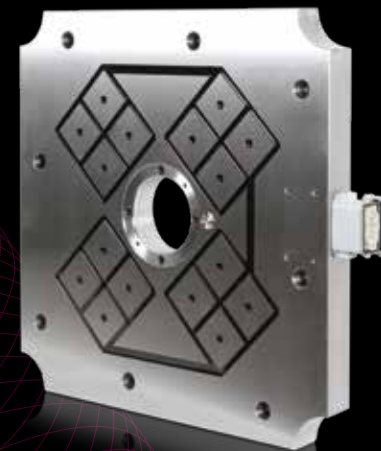


LONG POLE TECHNOLOGY

- Especially suitable for small machines
- Optimum utilisation of the available surface by flexible pole arrangement
- Enhanced performance with small moulds due to concentration effect
- Available for maximum operating temperatures of 230 °C

SQUARE POLE TECHNOLOGY

- Especially suitable for large machines
- Maximum magnetic clamping force with full-surface cover
- Available for all machine sizes



COMBINATION

By the combination of long and square poles, Hilma-Römheld combines the advantages of both pole technologies

Electric control M1C / M2C



ROEMHELD
HILMA ■ STARK

Highest safety standards

Simple error diagnosis
by readout

IP54 splashproof

Painting in preferred colour

Exchangeable master module
for easy maintenance

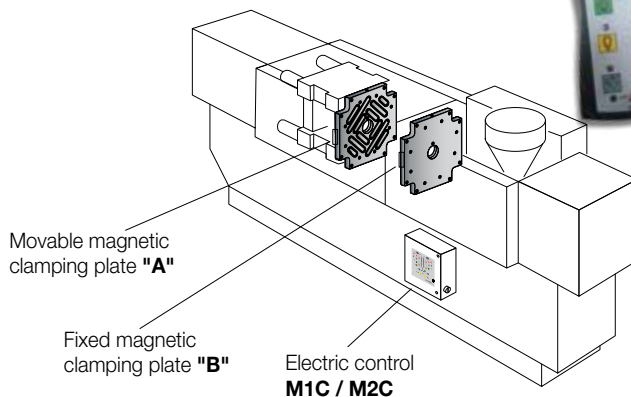
Control via remote control
or machine panel

Easy and safe operation

Error code indication on LCD display

Integration via
EUROMAP interface

Key switch protects
against unauthorised operation

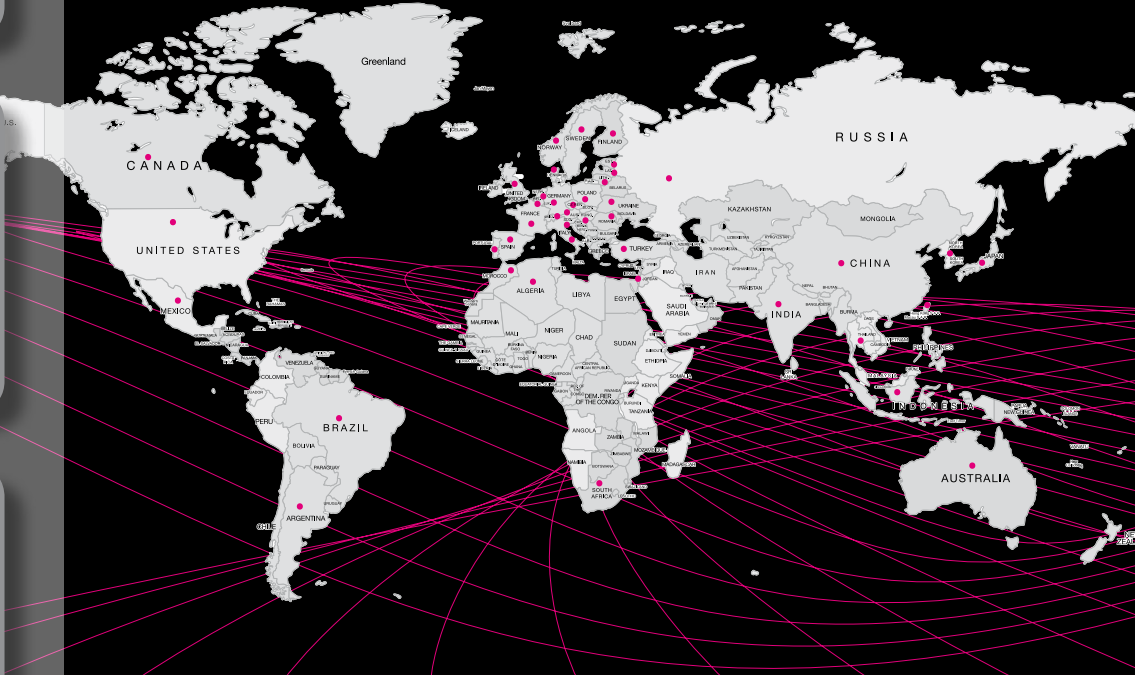




ROEMHELD
HILMA ■ STARK



Worldwide competence



M-TECS also available for:

- rubber processing
- pressure die casting
- metal forming



www.roemheld-group.com

Hilma-Römheld GmbH
Schützenstraße 74 · 57271 Hilchenbach, Germany
Tel.: +49 27 33 / 281-0 · Fax: +49 27 33 / 281-169
E-mail: info@hilma.de · www.roemheld-group.com

Products for productivity