

# rtc<sup>®</sup>

QUICK CONNECT TECHNOLOGY  
[www.rtc-tec.com](http://www.rtc-tec.com)



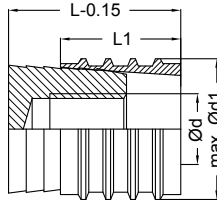
## ACCESSORIES



**rtc type BC**

Threadless Pressure Plug - Verschlussstopfen ohne Gewinde  
Interchangeability - Austauschbar mit HASCO Z 942

- 1 - Material: MS58 Brass - Messing
- 2 - Material: Stainless Steel - Edelstahl

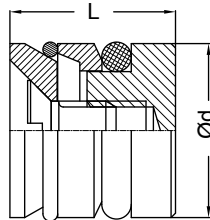


Order No / Bestellnr.	Ød	Ød1	L	L1	Package Pcs. Verpackungseinheit
BC - 06	M3	6	11.5	8	25
BC - 07	M3	7	11.5	8	25
BC - 08	M4	8	11.5	8	25
BC - 10	M6	10	14	10	25
BC - 12	M6	12	14	10	15
BC - 14	M8	14	17	12	15
BC - 15	M8	15	17	12	15
BC - 16	M8	16	17	12	15
BC - 20	M8	20	17	12	15

**rtc type BCO**

Threadless Pressure Plug - Verschlussstopfen ohne Gewinde  
Interchangeability - Austauschbar mit EOC KN / 105

- Material: MS58
- Brass - Messing
- O-Ring: Viton
- Max. Temp: 200 °C

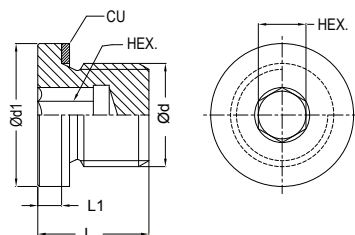
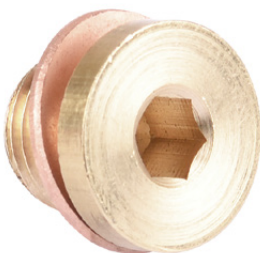


Order No / Bestellnr.	Ød	L	Package Pcs. Verpackungseinheit
BCO - 06	6	10	10
BCO - 07	7	10	10
BCO - 08	8	10	10
BCO - 8.5	8.5	10	10
BCO - 10	10	10	10
BCO - 10.5	10.5	10	10
BCO - 11	11	10	10
BCO - 11.5	11.5	10	10
BCO - 12	12	10	10
BCO - 14	14	10	10
BCO - 15	15	12	10
BCO - 16	16	12	10
BCO - 20	20	12	10
BCO - 23	23	12	10
BCO - 24	24	21.5	10
BCO - 25	25	21.5	10
BCO - 30	30	21.5	10

**rtc type PPD**

Pressure plugs with copper washer - Verschlussstopfen mit Kupferscheibe

Material: MS 58 (Brass) - Messing (DIN 908)



Order No / Bestellnr.	Ød	Ød1	L	L1	HEX.
PPD 10	BSP 1/8	14	11	3	5
PPD 13	BSP 1/4	18	15	3	6
PPD 17	BSP 3/8	22	15	3	8
PPD 21	BSP 1/2	24	18	4	10
PPD 26	BSP 3/4	32	20	5	12
PPD 33	BSP 1	39	21	5	17
PPD 1010	M10x1	14	11	3	5
PPD 1215	M12x1.5	17	15	3	6
PPD 1415	M14x1.5	19	15	3	6
PPD 1615	M16x1.5	21	15	3	8
PPD 2215	M22x1.5	27	18	4	10
PPD 2415	M24x1.5	30	18	4	12

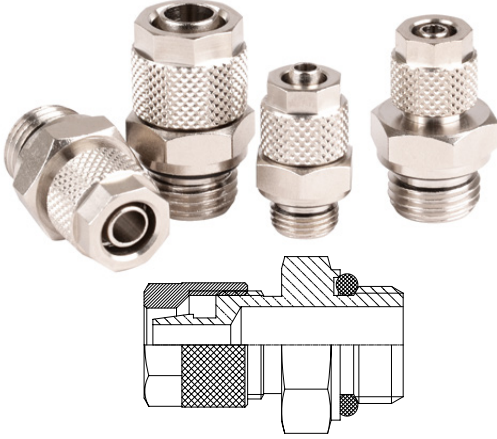
**rtc** TYPE **NOP**

Male threaded plastic hose nut / Aussengewinde Kunststoffschlauchmutter



Adapter / Nippel

Material: MS 58 (Brass) - Messing  
Plate: Nickel



Connection / Anschluss	Order No / Bestellnr.	HEX.
BSP 1/8 4x6 mm	NOP 10/06	14
BSP 1/8 6x8 mm	NOP 10/08	14
BSP 1/8 8x10 mm	NOP 10/10	14
BSP 1/4 4x6 mm	NOP 13/06	16
BSP 1/4 6x8 mm	NOP 13/08	16
BSP 1/4 8x10 mm	NOP 13/10	16
BSP 1/4 9x12 mm	NOP 13/12	16
BSP 3/8 4x6 mm	NOP 17/06	21
BSP 3/8 6x8 mm	NOP 17/08	21
BSP 3/8 8x10 mm	NOP 17/10	21
BSP 3/8 9x12 mm	NOP 17/12	21
BSP 1/2 6x8 mm	NOP 21/08	24
BSP 1/2 8x10 mm	NOP 21/10	24
BSP 1/2 9x12 mm	NOP 21/12	24

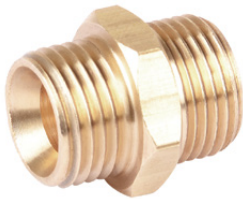
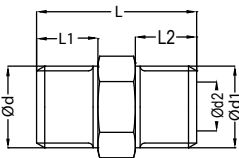
**rtc** TYPE **MMN**

Male thread adapters with inner cone DIN 3863 / Aussengewinde Doppelnippel mit Innenkonus DIN 3863



Adapter / Nippel

Material: MS 58 (Brass) - Messing



Order No / Bestellnr.	Ød	Ød1	Ød2	L	L1	L2	HEX.
MMN 13-13	BSP 1/4	BSP 1/4	6	23	9	9	17
MMN 17-17	BSP 3/8	BSP 3/8	9	23	9	9	19
MMN 21-21	BSP 1/2	BSP 1/2	13	30	12	12	22
MMN 26-26	BSP 3/4	BSP 3/4	13	40	16	16	27
MMN 13-1415	BSP 1/4	M14x1.5	6	23	9	9	17
MMN 13-1615	BSP 1/4	M16x1.5	6	23	9	9	19
MMN 17-1415	BSP 3/8	M14x1.5	8	23	9	9	19
MMN 17-1615	BSP 3/8	M16x1.5	9	23	9	9	19
MMN 21-1415	BSP 1/2	M14x1.5	6	30	12	9	22
MMN 21-1615	BSP 1/2	M16x1.5	9	30	12	9	22
MMN 21-2415	BSP 1/2	M24x1.5	13	36	16	12	27
MMN 26-2415	BSP 3/4	M24x1.5	13	40	16	16	27
MMN 1415-1415	M14x1.5	M14x1.5	6	23	9	9	17
MMN 1615-1615	M16x1.5	M16x1.5	9	23	9	9	19
MMN 2415-2415	M24x1.5	M24x1.5	13	40	16	16	27
MMN 1415-1615	M14x1.5	M16x1.5	9	23	9	9	17
MMN 1415-1815	M14x1.5	M18x1.5	9	26	12	9	19
MMN 1615-1815	M16x1.5	M18x1.5	9	26	12	9	19

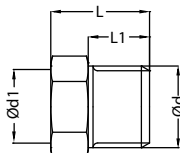
**rtc** TYPE **MFN**

Male - Female thread adapters / Aussen - Innengewinde Adapter



Adapter / Nippel

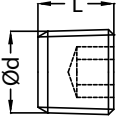
Material: MS 58 (Brass) - Messing



Order No / Bestellnr.	Ød	Ød1	L	L1	HEX.
MFN 13-10	BSP 1/4	BSP 1/8	11	7	17
MFN 17-14	BSP 3/8	BSP 1/4	13	9	19
MFN 21-17	BSP 1/2	BSP 3/8	18	12	24
MFN 26-21	BSP 3/4	BSP 1/2	24	16	27
MFN 1415-1010	M14x1.5	M10x1	11	7	17
MFN 1815-1415	M18x1.5	M14x1.5	14	9	21
MFN 2415-1615	M24x1.5	M16x1.5	24	16	27

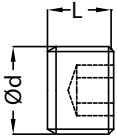
Pressure plug with conical thread DIN 906 / Verschlussstopfen mit konischem Gewinde DIN 906

TYPE PPR - PPK **rtc**

Pressure Plug / Verschlussstopfen	Order No / Bestellnr.	Ød	L	HEX.
Material: MS 58 (Brass) - Messing  	PPR 10	BSPT 1/8	8	5
	PPR 13	BSPT 1/4	10	7
	PPR 17	BSPT 3/8	10	8
	PPR 21	BSPT 1/2	10	10
	PPK 0875	M8x075	8	4
	PPK 1010	M10x1	8	5
	PPK 1215	M12x1.5	8	6
	PPK 1415	M14x1.5	10	7

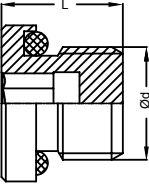
Pressure plug with parallel thread DIN 906 / Verschlussstopfen zylindrischem Gewinde DIN 906

TYPE PPG - PPM **rtc**

Pressure Plug / Verschlussstopfen	Order No / Bestellnr.	Ød	L	HEX.
Material: MS 58 (Brass) - Messing  	PPG 10	BSP 1/8	8	5
	PPG 13	BSP 1/4	10	7
	PPG 17	BSP 3/8	10	8
	PPG 21	BSP 1/2	10	10
	PPM 0875	M8x075	8	4
	PPM 1010	M10x1	8	5
	PPM 1215	M12x1.5	8	6
	PPM 1415	M14x1.5	10	7


Pressure plug with O-ring DIN 908 / Verschlussstopfen mit O-ring DIN 908

TYPE PPO **rtc**

Pressure Plug / Verschlussstopfen	Order No / Bestellnr.	Ød	L	INNER HEX.
Material: MS 58 (Brass) - Messing  	PPO 10	BSP 1/8	9	5
	PPO 13	BSP 1/4	14	6
	PPO 17	BSP 3/8	16	8
	PPO 21	BSP 1/2	18	10
	PPO 26	BSP 3/4	20	12
	PPO 33	BSP 1	22	14
	PPO 42	BSP 1-1/4	24	16
	PPO 48	BSP 1-1/2	26	18
	PPO 60	BSP 2	28	20


Hose Clamps / Schlauchschellen

TYPE CPW2 **rtc**

Hose Clamps / Schlauchschellen	Order No / Bestellnr.	Hose Outer Diameter Range (mm) / (inch)		Quantity Pack
Material: Screw - DIN 1132 Zinc Plated Steel Housing - AISI 430 (DIN 1.4016 Stainless Steel) Band - AISI 430 (DIN 1.4016 Stainless Steel)  	CPW2 - 1016 - 09	10 - 16	3/8 - 5/8	100
	CPW2 - 1220 - 09	12 - 20	1/2 - 3/4	100
	CPW2 - 1222 - 09	12 - 22	1/2 - 7/8	100
	CPW2 - 1627 - 09	16 - 27	5/8 - 1-1/16	
	CPW2 - 2032 - 09	20 - 32	3/4 - 1-1/4	
	CPW2 - 2540 - 09	25 - 40	1 - 1-5/8	

Hose Clamps / Schlauchschellen

TYPE CPE **rtc**

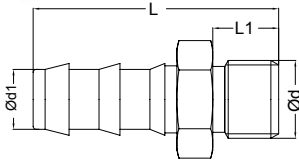
Hose Clamps / Schlauchschellen	Order No / Bestellnr.	Hose Diameter (mm)	Quantity Pack
Material: W1 - DIN 1.0330 Mild Steel  	CPE - 1315	13-15	100
	CPE - 1417	14-17	100
	CPE - 1518	15-18	100
	CPE - 1720	17-20	100
	CPE - 1821	18-21	100

rtc TYPE MHN

Male thread Push to connect hose connect / Aussengewinde Schnellsteck Schlauchtülle

Adapter / Nippel

Material: MS 58 (Brass) - Messing  
Plate: Nickel



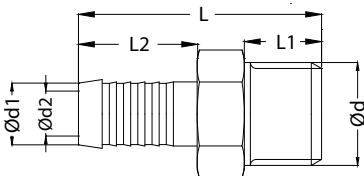
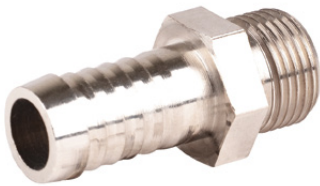
Order No / Bestellnr.	Ød	Ød1	L	L1	HEX.
MHN 10-06 HT-1	BSP 1/8	6	39	7	14
MHN 10-10 HT-1	BSP 1/8	10	39	7	14
MHN 13-06 HT-1	BSP 1/4	6	39	9	17
MHN 13-10 HT-1	BSP 1/4	10	39	9	17
MHN 13-13 HT-1	BSP 1/4	13	39	9	17
MHN 17-10 HT-1	BSP 3/8	10	39	9	19
MHN 17-13 HT-1	BSP 3/8	13	43	9	19
MHN 21-10 HT-1	BSP 1/2	10	43	10	22
MHN 21-13 HT-1	BSP 1/2	13	43	10	22
MHN 21-16 HT-1	BSP 1/2	16	58	10	22
MHN 26-16 HT-1	BSP 3/4	16	62	16	27
MHN 26-19 HT-1	BSP 3/4	19	62	16	27
MHN 33-19 HT-1	BSP 1	19	69	19	35
MHN 1010-10 HT-1	M10x1	10	39	7	11
MHN 1415-13 HT-1	M14x1.5	13	39	9	15

rtc TYPE MHN

Male thread hose connect / Aussengewinde Schlauchtülle

Adapter / Nippel

Material: MS 58 (Brass) - Messing  
Plate: Nickel



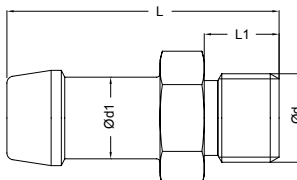
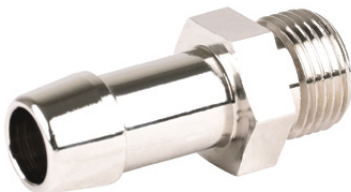
Order No / Bestellnr.	Ød	Ød1	Ød2	L	L1	L2	HEX.
MHN 10-09 HT-2	BSP 1/8	9	6	33.5	7	22.5	11
MHN 13-09 HT-2	BSP 1/4	9	6	37.5	9	25	15
MHN 13-13 HT-2	BSP 1/4	13	8	40	9	22.5	15
MHN 17-09 HT-2	BSP 3/8	9	6	37.5	9	25	17
MHN 17-13 HT-2	BSP 3/8	13	9	40	9	25	17
MHN 21-19 HT-2	BSP 1/2	19	13	50	12	35	22
MHN 26-19 HT-2	BSP 3/4	19	13	56	16	35	27
MHN 1010-09 HT-2	M10x1	9	6	33.5	9	22.5	11
MHN 1215-13 HT-2	M12x1.5	13	7	40	9	25	15
MHN 1415-13 HT-2	M14x1.5	13	9	40	9	25	15
MHN 1615-13 HT-2	M16x1.5	13	9	40	9	25	17
MHN 2415-19 HT-2	M24x1.5	19	13	56	16	35	27

rtc TYPE MHN

Male thread hose connect / Aussengewinde Schlauchtülle

Adapter / Nippel

Material: MS 58 (Brass) - Messing  
Plate: Nickel



Order No / Bestellnr.	Ød	Ød1	L	L1	HEX.
MHN 10-04 HT6	BSP 1/8	4	38	8	14
MHN 10-06 HT6	BSP 1/8	6	38	8	14
MHN 10-08 HT6	BSP 1/8	8	43	8	14
MHN 10-10 HT6	BSP 1/8	10	43	8	14
MHN 13-06 HT6	BSP 1/4	6	41	11	17
MHN 13-08 HT6	BSP 1/4	8	46	11	17
MHN 13-09 HT6	BSP 1/4	9	46	11	17
MHN 13-10 HT6	BSP 1/4	10	46	11	17
MHN 13-13 HT6	BSP 1/4	13	51	11	17
MHN 17-08 HT6	BSP 3/8	8	47	12	19
MHN 17-10 HT6	BSP 3/8	10	47	12	19
MHN 17-13 HT6	BSP 3/8	13	52	12	19
MHN 17-16 HT6	BSP 3/8	16	52	12	18
MHN 21-13 HT6	BSP 1/2	13	54	14	23
MHN 21-16 HT6	BSP 1/2	16	54	14	23
MHN 26-16 HT6	BSP 3/4	16	58	16	23

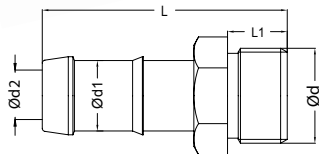
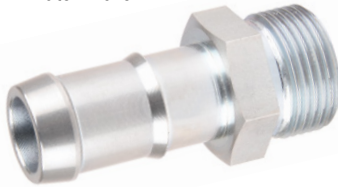


Male thread hose connect / Aussengewinde Schlauchtülle

TYPE **MHN** **rtc**

Adapter / Nippel

Material: MS 58 (Brass) - Messing  
Plate: Nickel



Order No / Bestellnr.	Ød	Ød1	Ød2	L	L1	HEX.
MHN 17-13 HT-8	BSP 3/8	13	9	59	12	19
MHN 17-16 HT-8	BSP 3/8	16	11	59	12	23
MHN 21-13 HT-8	BSP 1/2	13	9	61	14	23
MHN 21-16 HT-8	BSP 1/2	16	11	61	14	23
MHN 21-19 HT-8	BSP 1/3	19	11	61	14	23
MHN 26-19 HT-8	BSP 3/4	19	15	65	16	29
MHN 26-25 HT-8	BSP 3/4	25	19	80	16	35
MHN 33-19 HT-8	BSP 1	19	15	84	20	35
MHN 33-25 HT-8	BSP 1	25	19	84	20	35

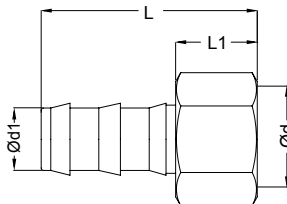


Female thread Push to connect hose connect / Innengewinde Schnellsteck Schlauchtülle

TYPE **FHN** **rtc**

Adapter / Nippel

Material: MS 58 (Brass) - Messing  
Plate: Nickel



Order No / Bestellnr.	Ød	Ød1	L	L1	HEX.
FHN 10-06 HT-1	BSP 1/8	6	36	12	14
FHN 10-10 HT-1	BSP 1/8	10	36	12	14
FHN 13-06 HT-1	BSP 1/4	6	40	16	17
FHN 13-10 HT-1	BSP 1/4	10	40	16	17
FHN 13-13 HT-1	BSP 1/4	13	44	16	17
FHN 17-10 HT-1	BSP 3/8	10	40	16	20
FHN 17-13 HT-1	BSP 3/8	13	44	16	20
FHN 21-10 HT-1	BSP 1/2	10	41	17	24
FHN 21-13 HT-1	BSP 1/2	13	45	17	24
FHN 21-16 HT-1	BSP 1/2	16	55	17	24
FHN 26-16 HT-1	BSP 3/4	16	67	19	30
FHN 26-19 HT-1	BSP 3/4	19	67	19	30
FHN 1010-10 HT-1	M10x1	10	36	12	14
FHN 1415-13 HT-1	M14x1.5	13	40	16	17

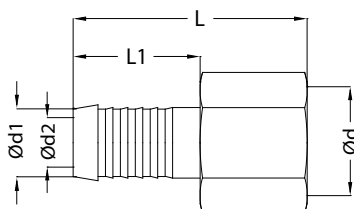
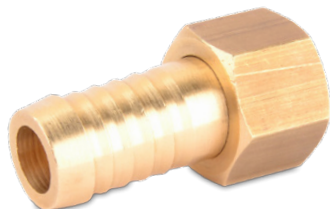


Female thread Push to connect hose connect / Innengewinde Schnellsteck Schlauchtülle

TYPE **FHN** **rtc**

Adapter / Nippel

Material: MS 58 (Brass) - Messing

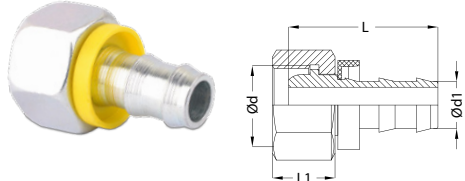


Order No / Bestellnr.	Ød	Ød1	Ød2	L	L1	HEX.
FHN 10-06 HT2	BSP 1/8	6	4.5	28	17	12
FHN 10-08 HT2	BSP 1/8	8	6.5	28	17	12
FHN 13-06 HT2	BSP 1/4	6	4.5	28.5	17	17
FHN 13-08 HT2	BSP 1/4	8	6.5	28.5	17	17
FHN 13-10 HT2	BSP 1/4	10	8	34	22.5	17
FHN 13-13 HT2	BSP 1/4	13	10	37	25	17
FHN 17-08 HT2	BSP 3/8	8	6.5	30	17	19
FHN 17-10 HT2	BSP 3/8	10	8	35	22.5	19
FHN 17-13 HT2	BSP 3/8	13	10	38	25	19
FHN 21-10 HT2	BSP 1/2	10	8	38	22.5	24
FHN 21-13 HT2	BSP 1/2	13	10	41	25	24
FHN 21-16 HT2	BSP 1/2	16	13	41	25	24
FHN 26-16 HT2	BSP 3/4	16	13	41	25	30
FHN 26-19 HT2	BSP 3/4	19	16	48	32	30
FHN 1415-09 HT2	M14x1.5	9	7	36	22.5	17
FHN 1415-13 HT2	M14x1.5	13	10	38.5	25	17
FHN 1615-09 HT2	M16x1.5	9	7	36	22.5	19
FHN 1615-13 HT2	M16x1.5	13	10	38.5	25	19
FHN 2415-19 HT2	M24x1.5	19	15	55	32	30

**rtc** TYPE SPN

Female thread swivel adapter nipple / Nippel mit Innengewinde Schwenkadapter

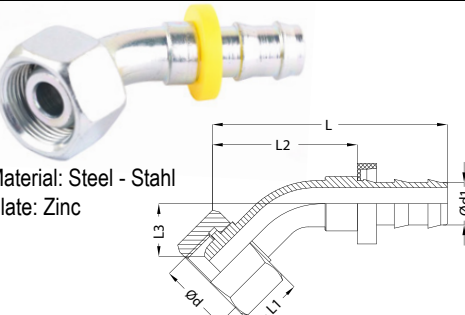


Adapter / Nippel	Size Größe	Order No / Bestellnr.	Ød	Ød1	L	L1	HEX.
Material: Steel - Stahl Plate: Zinc 	6	SPN 1215-06	M12x1.5	1/4 - 6.3	33	14.5	14
	6	SPN 1415-06	M14x1.5	1/4 - 6.3	33	14.5	17
	10	SPN 1615-10	M16x1.5	3/8 - 9.5	38	15.5	19
	10	SPN 1815-10	M18x1.5	3/8 - 9.5	38	15.5	22
	12	SPN 2215-13	M22x1.5	1/2 - 12.7	42	17	27
	16	SPN 2615-16	M26x1.5	5/8 - 15.9	53	18	32
	20	SPN 3020-19	M30x2.0	3/4 - 19.1	53	20	36
	25	SPN 3620-25	M36x2.0	1 - 25.4	58	21	41

**rtc** TYPE SPN

Female thread swivel adapter nipple 90° / Nippel mit Innengewinde Schwenkadapter 90°

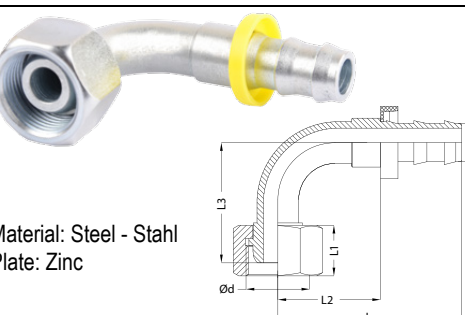


Adapter / Nippel	Size Größe	Order No / Bestellnr.	Ød	Ød1	L	L1	L2	L3	HEX.
Material: Steel - Stahl Plate: Zinc 	6	SPN 1215-06-45	M12x1.5	1/4 - 6.3	51	14.5	32	16	14
	6	SPN 1415-06-45	M14x1.5	1/4 - 6.3	51	14.5	32	16	17
	10	SPN 1615-10-45	M16x1.5	3/8 - 9.5	58	15.5	35	18	19
	10	SPN 1815-10-45	M18x1.5	3/8 - 9.5	59	15.5	36	18	22
	12	SPN 2215-13-45	M22x1.5	1/2 - 12.7	68	17	45	19	27
	16	SPN 2615-16-45	M26x1.5	5/8 - 15.9	81	18	45	21	32
	20	SPN 3020-19-45	M30x2.0	3/4 - 19.1	89	20	52	23	36
	25	SPN 3620-25-45	M36x2.0	1 - 25.4	105	21	67	30	41

**rtc** TYPE SPN

Female thread swivel adapter nipple 90° / Nippel mit Innengewinde Schwenkadapter 90°

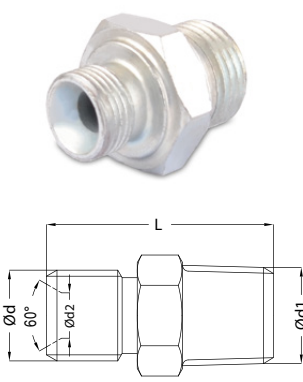


Adapter / Nippel	Size Größe	Order No / Bestellnr.	Ød	Ød1	L	L1	L2	L3	HEX.
Material: Steel - Stahl Plate: Zinc 	6	SPN 1215-06-90	M12x1.5	1/4 - 6.3	33	14.5	23	29	14
	6	SPN 1415-06-90	M14x1.5	1/4 - 6.3	33	14.5	23	29	17
	10	SPN 1615-10-90	M16x1.5	3/8 - 9.5	38	15.5	27	31	19
	10	SPN 1815-10-90	M18x1.5	3/8 - 9.5	38	15.5	27	34	22
	12	SPN 2215-13-90	M22x1.5	1/2 - 12.7	42	17	34	39	27
	16	SPN 2615-16-90	M26x1.5	5/8 - 15.9	53	18	37	43	32
	20	SPN 3020-19-90	M30x2.0	3/4 - 19.1	53	20	51	50	36
	25	SPN 3620-25-90	M36x2.0	1 - 25.4	58	21	61	70	41

**rtc** TYPE MRN

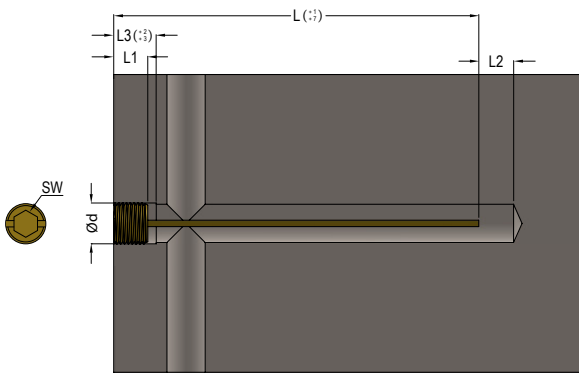
Male Metric with inner cone 60° to BSPT adapter - Verschraubung Metrisch Innenkonus 60° BSPT Aussengewinde



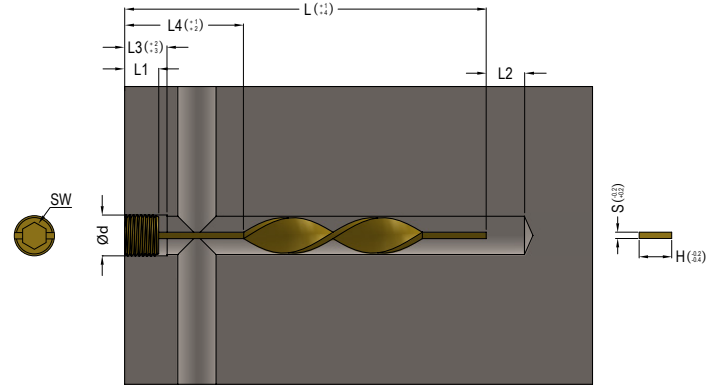
Adapter / Nippel	Order No / Bestellnr.	Ød	Ød1	Ød2	L	HEX.
Material: Steel - Stahl Plate: Zinc 	MRN 10-1210-06	M12x1.0	BSPT 1/8	6	21	14
	MRN 13-1210-06	M12x1.0	BSPT 1/4	6	26	14
	MRN 10-1215-06	M12x1.5	BSPT 1/8	6	26	14
	MRN 13-1215-06	M12x1.5	BSPT 1/4	6	30	14
	MRN 13-1415-08	M14x1.5	BSPT 1/4	8	30	17
	MRN 17-1415-08	M14x1.5	BSPT 3/8	8	30	19
	MRN 17-1615-10	M16x1.5	BSPT 3/8	10	30	19
	MRN 21-1615-10	M16x1.5	BSPT 1/2	10	33	24
	MRN 17-1815-12	M18x1.5	BSPT 3/8	12	31	19
	MRN 21-1815-12	M18x1.5	BSPT 1/2	12	38	24
	MRN 17-2215-15	M22x1.5	BSPT 3/8	15	33	24
	MRN 21-2215-15	M22x1.5	BSPT 1/2	15	35	24
	MRN 26-2615-18	M26x1.5	BSPT 3/4	18	38	27
	MRN 33-3020-22	M30x2.0	BSPT 1	22	54	35
	MRN 42-3620-26	M36x2.0	BSPT 1-1/4	26	58	46

Straight and Turbo Buffles

TYPE **SBM / TBM** **rtc**



Straight Buffle



Turbo Buffle



Please kindly add "T" at the end of the product code for Pre-Sealed Thread  
Example Code: TBM 10-100T

Straight and Turbo Buffles

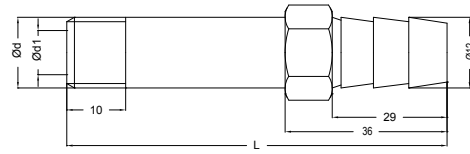
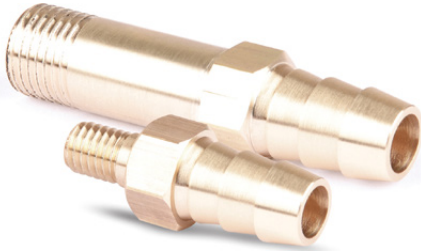
TYPE **SBM / TBM** **rtc**

Order No / Bestellnr.		Ød	Ød1	L	L1	L2	L3	L4	H	S	SW
Straight Buffle	Turbo Buffle										
SBM 10-100	TBM 10-100	BSP 1/8	8.5	100	8	8	10	50	8.5	1.6	5
SBM 10-200	TBM 10-200	BSP 1/8	8.5	200	8	8	10	100	8.5	1.6	5
SBM 13-125	TBM 13-125	BSP 1/4	11.5	125	10	11	13	50	11.5	2.4	7
SBM 13-250	TBM 13-250	BSP 1/4	11.5	250	10	11	13	100	11.5	2.4	7
SBM 17-150	TBM 17-150	BSP 3/8	15	150	10	15	17	50	15	2.4	8
SBM 17-300	TBM 17-300	BSP 3/8	15	300	10	15	17	100	15	2.4	8
SBM 21-200	TBM 21-200	BSP 1/2	18.5	200	10	18	20	75	18.5	2.4	10
SBM 21-400	TBM 21-400	BSP 1/2	18.5	400	10	18	20	125	18.5	2.4	10
SBM 26-300	TBM 26-300	BSP 3/4	23.5	300	12	23	25	100	23.5	3.2	12
SBM 26-500	TBM 26-500	BSP 3/4	23.5	500	12	23	25	150	23.5	3.2	12
SBM 08075-100	TBM 08075-100	M8x0.75	6	100	8	6	8	50	6	1.6	4
SBM 08075-200	TBM 08075-200	M8x0.75	6	200	8	6	8	100	6	1.6	4
SBM 1010-100	TBM 1010-100	M10x1.0	8	100	8	8	10	50	8	1.6	5
SBM 1010-200	TBM 1010-200	M10x1.0	8	200	8	8	10	100	8	1.6	5
SBM 1215-125	TBM 1215-125	M12x1.5	10	125	8	10	12	50	10	2.4	6
SBM 1215-250	TBM 1215-250	M12x1.5	10	250	8	10	12	100	10	2.4	6
SBM 1415-150	TBM 1415-150	M14x1.5	12	150	10	12	14	50	12	2.4	6
SBM 1415-300	TBM 1415-300	M14x1.5	12	300	10	12	14	100	12	2.4	6
SBM 1615-150	TBM 1615-150	M16x1.5	14	150	10	14	16	50	14	2.4	8
SBM 1615-300	TBM 1615-300	M16x1.5	14	300	10	14	16	100	14	2.4	8
SBM 1815-150	TBM 1815-150	M18x1.5	16	150	10	16	18	50	16	2.4	8
SBM 1815-300	TBM 1815-300	M18x1.5	16	300	10	16	18	100	16	2.4	8
SBM 2015-150	TBM 2015-150	M20x1.5	18	150	10	18	20	50	18	2.4	10
SBM 2015-300	TBM 2015-300	M20x1.5	18	300	10	18	20	100	18	2.4	10
SBM 2420-150	TBM 2420-150	M24x2.0	20	150	12	20	22	50	20	3.2	12
SBM 2420-300	TBM 2420-300	M24x2.0	20	300	12	20	22	100	20	3.2	12



**rtc** TYPE SRM / SRG

Extension Plugs / Erweiterung Nippels



Order No / Bestellnr.	Ød	Ød1	L	HEX.
SRM 08 x 38	M 8x1.25	5	38	13
SRM 08 x 60	M 8x1.25	5	60	13
SRM 08 x 80	M 8x1.25	5	80	13
SRM 08 x 100	M 8x1.25	5	100	13
SRM 10 x 38	M 10x1.5	6	38	13
SRM 10 x 60	M 10x1.5	6	60	13
SRM 10 x 80	M 10x1.5	6	80	13
SRM 10 x 100	M 10x1.5	6	100	13
SRM 10 x 120	M 10x1.5	6	120	13
SRM 10 x 150	M 10x1.5	6	150	13
SRM 12 x 38	M 12x1.75	7	38	13
SRM 12 x 60	M 12x1.75	7	60	13
SRM 12 x 80	M 12x1.75	7	80	13
SRM 12 x 100	M 12x1.75	7	100	13
SRM 12 x 120	M 12x1.75	7	120	13
SRM 12 x 150	M 12x1.75	7	150	13
SRM 14 x 38	M 14x2.0	7	38	14

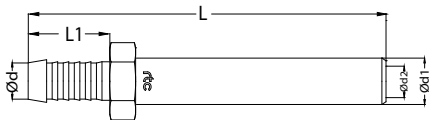
Order No / Bestellnr.	Ød	Ød1	L	HEX.
SRG 10 x 38	BSP 1/8	6	38	13
SRG 10 x 60	BSP 1/8	6	60	13
SRG 10 x 80	BSP 1/8	6	80	13
SRG 10 x 100	BSP 1/8	6	100	13
SRG 10 x 120	BSP 1/8	6	120	13
SRG 10 x 150	BSP 1/8	6	150	13
SRG 13 x 38	BSP 1/4	8	38	14
SRG 13 x 60	BSP 1/4	8	60	14
SRG 13 x 80	BSP 1/4	8	80	14
SRG 13 x 100	BSP 1/4	8	100	14
SRG 13 x 120	BSP 1/4	8	120	14
SRG 13 x 150	BSP 1/4	8	150	14

**rtc** TYPE FHE

Extension hose stems / Schlauchtülleverlängerung



Adapter / Nippel



Order No / Bestellnr.	Ød	Ød1	Ød2	L	L1	HEX.
FHE 9-120 HT2	10	9	6	120	22.5	11
FHE 13-150 HT2	14	13	9	150	25	15

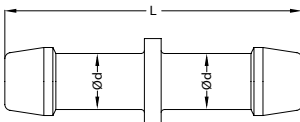
**rtc** TYPE HHN

Hose to Hose adapter



Adapter / Nippel

Material: MS 58 (Brass) - Messing



Order No / Bestellnr.	Ød	L
HHN 04 HT-6	4	50
HHN 06 HT-6	6	50
HHN 08 HT-6	8	50
HHN 09 HT-6	9	50
HHN 10 HT-6	10	50
HHN 13 HT-6	13	58
HHN 16 HT-6	16	58
HHN 19 HT-6	19	75
HHN 25 HT-6	25	85

**rtc** TYPE FHNN

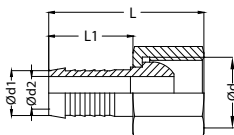
Standard hose connection with outer cone DIN 3863 and hex nut  
Standard Schlauchtülle mit Überwurfmutter - Nippel mit Außenkonus DIN 3863



Adapter / Nippel

Material: MS 58 (Brass) - Messing

Plate: Nickel




Order No / Bestellnr.	Ød	Ød1	Ød2	L	L1	HEX.
FHNN 13-09 HT2	BSP 1/4	9	6	40	22.5	17
FHNN 17-13 HT2	BSP 3/8	13	9	41	22.5	21
FHNN 26-19 HT2	BSP 3/4	19	13	52	32	32
FHNN 1415-09 HT2	M14x1.5	9	6	40	22.5	17
FHNN 1615-13 HT2	M16x1.5	13	9	41	22.5	21
FHNN 2415-19 HT2	M24x1.5	19	13	52	32	30



Elbow 90° / Winkel 90°


TYPE **EBFM 90** **rtc**

Adapter / Nippel	Order No / Bestellnr.	Connection / Anschluss	
		Male Aussengewinde	Female Innengewinde
	EBFM 10 - 90	BSP 1/8	BSP 1/8
	EBFM 13 - 90	BSP 1/4	BSP 1/4
	EBFM 17 - 90	BSP 3/8	BSP 3/8
	EBFM 21 - 90	BSP 1/2	BSP 1/2
	EBFM 26 - 90	BSP 3/4	BSP 3/4
	EBFM 33 - 90	BSP 1	BSP 1
	EBFM 42 - 90	BSP 1-1/4	BSP 1-1/4
	EBFM 48 - 90	BSP 1-1/2	BSP 1-1/2
	EBFM 60 - 90	BSP 2	BSP 2



Elbow 45° / Winkel 45°

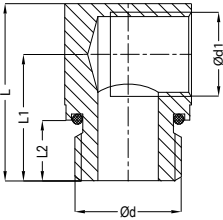
TYPE **EBFM 45** **rtc**

Adapter / Nippel	Order No / Bestellnr.	Connection / Anschluss	
		Male Aussengewinde	Female Innengewinde
	EBFM 10 - 45	BSP 1/8	BSP 1/8
	EBFM 13 - 45	BSP 1/4	BSP 1/4
	EBFM 17 - 45	BSP 3/8	BSP 3/8
	EBFM 21 - 45	BSP 1/2	BSP 1/2
	EBFM 26 - 45	BSP 3/4	BSP 3/4
	EBFM 33 - 45	BSP 1	BSP 1
	EBFM 42 - 45	BSP 1-1/4	BSP 1-1/4
	EBFM 48 - 45	BSP 1-1/2	BSP 1-1/2
	EBFM 60 - 45	BSP 2	BSP 2



Male - Female thread adapters (90°) / Außen - Innengewinde Adapter (90°)

TYPE **ELB** **rtc**

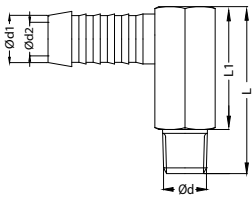
Adapter / Nippel	Order No / Bestellnr.	Ød	Ød1	L	L1	L2	#
	ELB 13-10	BSP 1/4	BSP 1/8	25	17	9	15
	ELB 17-13	BSP 3/8	BSP 1/4	27.5	19	9	20
	ELB 21-17	BSP 1/2	BSP 3/8	35	25	15	25

Material: MS 58 (Brass) - Messing  
Plate: Nickel



Male - Hose adapters (90°) / Aussengewinde Schlauchanschluss Adapter (90°)

TYPE **ELB** **rtc**

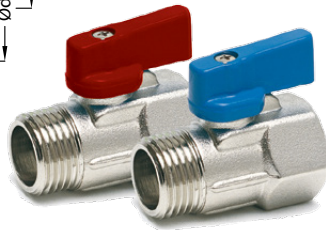
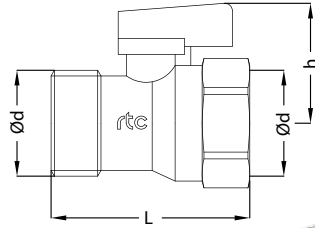
Adapter / Nippel	Order No / Bestellnr.	Ød	Ød1	Ød2	L	L1	HEX.
	MHN 10-09 HT-2 90	BSPT 1/8	9	6	27	20	15
	MHN 13-13 HT-2 90	BSPT 1/4	13	9	34	24	17
	MHN 21-19 HT-2 90	BSPT 1/2	19	13	47	32	24
	MHN 0875-09 HT-2 90	M8x0.75	9	4.5	27	20	15
	MHN 1010-09 HT-2 90	M10x1	9	6	27	20	15
	MHN 1415-13 HT-2 90	M14x1.5	13	9	34	24	17
	MHN 2415-19 HT-2 90	M24x1.5	19	13	47	32	24

**rtc** TYPE KVFM

Mini ball valve with female to male connection / Kugelventil



Mini Ball Valve / Mini Kugelventil



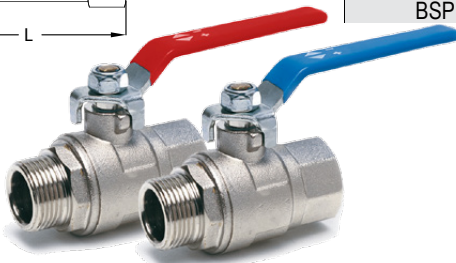
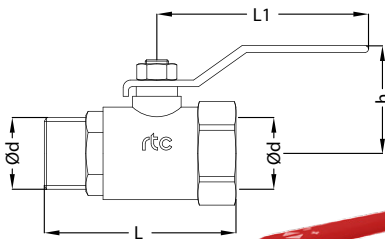
Connection / Anschluss		Order No / Bestellnr.		L	h	Bar
Ød Female	Ød Male	Red / Rot	Blue/ Blau			
BSP 1/4		KVFM 13-R	KVFM 13-B	38	30	16
BSP 3/8		KVFM 17-R	KVFM 17-B	38	30	16
BSP 1/2		KVFM 21-R	KVFM 21-B	41	32	16
BSP 3/4		KVFM 26-R	KVFM 26-B	51	32	16

**rtc** TYPE SVFM

Standard ball valve with female to male connection / Kugelventil



Standard Ball Valve / Standart Kugelventil



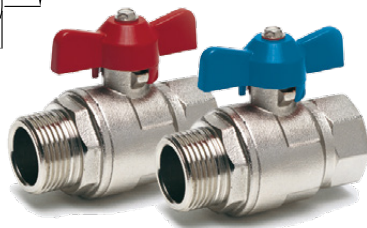
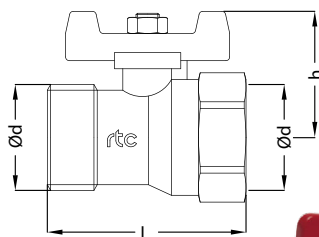
Connection / Anschluss		Order No / Bestellnr.		L	L1	h	Bar
Ød Female	Ød Male	Red / Rot	Blue/ Blau				
BSP 1/4		SVFM 13-R	SVFM 13-B	57	109	35	25
BSP 3/8		SVFM 17-R	SVFM 17-B	57	109	35	25
BSP 1/2		SVFM 21-R	SVFM 21-B	65	109	44	25
BSP 3/4		SVFM 26-R	SVFM 26-B	72	109	47	25
BSP 1		SVFM 33-R	SVFM 33-B	86	119	52	25
BSP 1-1/4		SVFM 42-R	SVFM 42-B	102	137	57	25
BSP 1-1/2		SVFM 48-R	SVFM 48-B	110	162	73	25

**rtc** TYPE TVFM

T Handle ball valve with female to male connection / Kugelventil



Standard Ball Valve / Standart Kugelventil



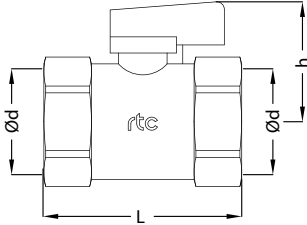
Connection / Anschluss		Order No / Bestellnr.		L	h	Bar
Ød Female	Ød Male	Red / Rot	Blue/ Blau			
BSP 1/4		TVFM 13-R	TVFM 13-B	57	37	25
BSP 3/8		TVFM 17-R	TVFM 17-B	57	37	25
BSP 1/2		TVFM 21-R	TVFM 21-B	65	41	25
BSP 3/4		TVFM 26-R	TVFM 26-B	72	44	25
BSP 1		TVFM 33-R	TVFM 33-B	86	53	25
BSP 1-1/4		TVFM 42-R	TVFM 42-B	102	58	25



Mini ball valve with female to female connection / Kugelventil

TYPE KVFF **rtc**

Mini Ball Valve / Mini Kugelventil



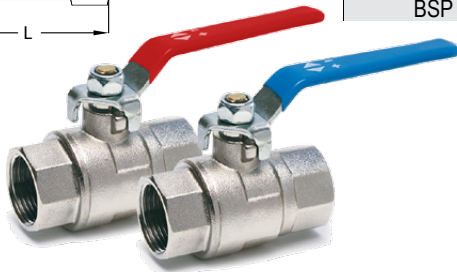
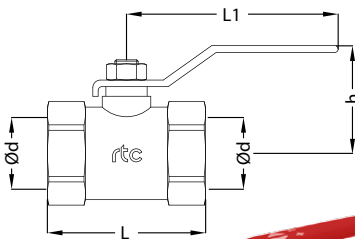
Connection / Anschluss	Order No / Bestellnr.		L	h	Bar
	Ød Female	Ød Female			
BSP 1/4		KVFF 13-R / KVFF 13-B	38	30	16
BSP 3/8		KVFF 17-R / KVFF 17-B	38	30	16
BSP 1/2		KVFF 21-R / KVFF 21-B	41	32	16
BSP 3/4		KVFF 26-R / KVFF 26-B	51	32	16



Standard ball valve with female to female connection / Kugelventil

TYPE SVFF **rtc**

Standard Ball Valve / Standard Kugelventil



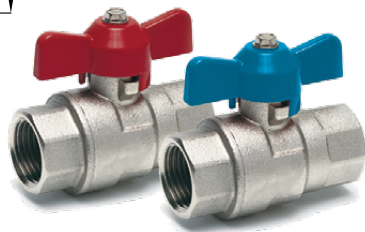
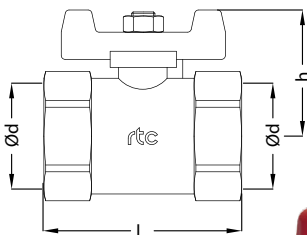
Connection / Anschluss	Order No / Bestellnr.		L	L1	h	Bar
	Ød Female	Ød Female				
BSP 1/4		SVFF 13-R / SVFF 13-B	49	109	48	25
BSP 3/8		SVFF 17-R / SVFF 17-B	49	109	48	25
BSP 1/2		SVFF 21-R / SVFF 21-B	58	109	48	25
BSP 3/4		SVFF 26-R / SVFF 26-B	68	109	51	25
BSP 1		SVFF 33-R / SVFF 33-B	83	119	57	25
BSP 1-1/4		SVFF 42-R / SVFF 42-B	98	137	64	25
BSP 1-1/2		SVFF 48-R / SVFF 48-B	109	162	74	25



T Handle ball valve with female to male connection / Kugelventil

TYPE TVFF **rtc**

Standard Ball Valve / Standard Kugelventil



Connection / Anschluss	Order No / Bestellnr.		L	h	Bar
	Ød Female	Ød Female			
BSP 1/4		TVFF 13-R / TVFF 13-B	49	37	25
BSP 3/8		TVFF 17-R / TVFF 17-B	49	37	25
BSP 1/2		TVFF 21-R / TVFF 21-B	58	41	25
BSP 3/4		TVFF 26-R / TVFF 26-B	68	44	25
BSP 1		TVFF 33-R / TVFF 33-B	83	53	25
BSP 1-1/4		TVFF 42-R / TVFF 42-B	98	60	25

**rtc** TYPE LOCK90

Push to Connect Hoses for max. 90°C / Schnellsteck Schlauch für max. 90°C

Order No / Bestellnr.	Ø Inside		Ø Outside mm	Max Working Pressure		Bursting Pressure		BR mm	W/A g/m	L/B Mt
	Inch	mm		Bar	Psi	Bar	Psi			
rtc-LOCK90-10R	3/8	9,5	15,5	28	406	112	1624	80	150	+ 10
rtc-LOCK90-10B	3/8	9,5	15,5	28	406	112	1624	80	150	+ 10
rtc-LOCK90-10S	3/8	9,5	15,5	28	406	112	1624	80	150	+ 10
rtc-LOCK90-12R	1/2	12,7	19,5	28	406	112	1624	100	220	+ 10
rtc-LOCK90-12B	1/2	12,7	19,5	28	406	112	1624	100	220	+ 10
rtc-LOCK90-12S	1/2	12,7	19,5	28	406	112	1624	100	220	+ 10
rtc-LOCK90-16R	5/8	16,0	22,6	24	348	96	1392	125	260	+ 10
rtc-LOCK90-16B	5/8	16,0	22,6	24	348	96	1392	125	260	+ 10
rtc-LOCK90-16S	5/8	16,0	22,6	24	348	96	1392	125	260	+ 10
rtc-LOCK90-19R	3/4	19,0	25,8	21	305	84	1218	150	310	+ 10
rtc-LOCK90-19B	3/4	19,0	25,8	21	305	84	1218	150	310	+ 10
rtc-LOCK90-19S	3/4	19,0	25,8	21	305	84	1218	150	310	+ 10
rtc-LOCK90-25R	1	25,4	33,2	20	290	80	1060	170	460	+ 10
rtc-LOCK90-25B	1	25,4	33,2	20	290	80	1060	170	460	+ 10
rtc-LOCK90-25S	1	25,4	33,2	20	290	80	1060	170	460	+ 10

Working Temperature Range for water | -40°C to +90°C  
Arbeitsbereich für wasser | -40°F to +194°F

Working Temperature Range for air | -40°C to +70°C  
Arbeitsbereich für luft | -40°F to +158°F



**rtc** TYPE LOCK90S

Special Push to Connect Hoses for max. 90°C / Spezial Schnellsteck Schlauch für max. 90°C

Working Temperature Range for water | -40°C to +90°C  
Arbeitsbereich für wasser | -40°F to +194°F

Working Temperature Range for air | -40°C to +70°C  
Arbeitsbereich für luft | -40°F to +158°F

Order No / Bestellnr.	Ø Inside		Ø Outside mm	Max Working Pressure		Bursting Pressure		BR mm	W/A g/m	L/B Mt
	Inch	mm		Bar	Psi	Bar	Psi			
rtc-LOCK90S-10R	3/8	9,5	15,3	28	406	140	2030	80	170	+ 10
rtc-LOCK90S-10B	3/8	9,5	15,3	28	406	140	2030	80	170	+ 10
rtc-LOCK90S-10S	3/8	9,5	15,3	28	406	140	2030	80	170	+ 10
rtc-LOCK90S-13R	1/2	12,7	19,5	28	406	140	2030	100	230	+ 10
rtc-LOCK90S-13B	1/2	12,7	19,5	28	406	140	2030	100	230	+ 10
rtc-LOCK90S-13S	1/2	12,7	19,5	28	406	140	2030	100	230	+ 10
rtc-LOCK90S-16R	5/8	16,0	22,6	24	348	110	1595	125	270	+ 10
rtc-LOCK90S-16B	5/8	16,0	22,6	24	348	110	1595	125	270	+ 10
rtc-LOCK90S-16S	5/8	16,0	22,6	24	348	110	1595	125	270	+ 10
rtc-LOCK90S-19R	3/4	19,0	25,8	21	305	95	1378	150	320	+ 10
rtc-LOCK90S-19B	3/4	19,0	25,8	21	305	95	1378	150	320	+ 10
rtc-LOCK90S-19S	3/4	19,0	25,8	21	305	95	1378	150	320	+ 10
rtc-LOCK90S-25R	1	25,4	33,2	20	290	90	1305	170	470	+ 10
rtc-LOCK90S-25B	1	25,4	33,2	20	290	90	1305	170	470	+ 10
rtc-LOCK90S-25S	1	25,4	33,2	20	290	90	1305	170	470	+ 10

Push to Connect Hoses for max. 140 °C / Schnellsteck Schlauch für max. 140 °C

TYPE LOCK140S 

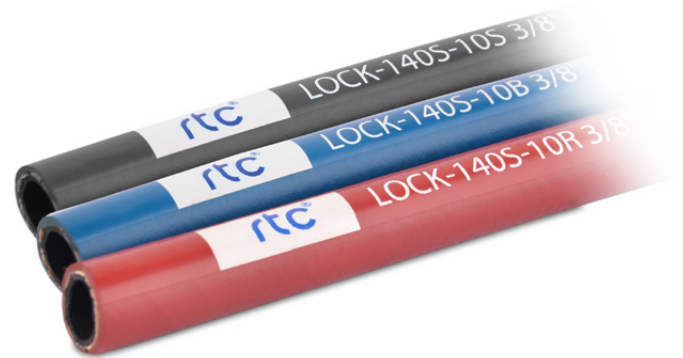
Order No / Bestellnr.	Ø Inside		Ø Outside	Max Working Pressure		Bursting Pressure		BR	W/A	L/B
	Inch	mm	mm	Bar	Psi	Bar	Psi	mm	g/m	Mt
rtc-LOCK140S-10R	3/8	9,5	15,3	28	406	200	2900	80	190	+ 10
rtc-LOCK140S-10B	3/8	9,5	15,3	28	406	200	2900	80	190	+ 10
rtc-LOCK140S-10S	3/8	9,5	15,3	28	406	200	2900	80	190	+ 10
rtc-LOCK140S-12R	1/2	12,7	19,5	28	406	200	2900	100	240	+ 10
rtc-LOCK140S-12B	1/2	12,7	19,5	28	406	200	2900	100	240	+ 10
rtc-LOCK140S-12S	1/2	12,7	19,5	28	406	200	2900	100	240	+ 10
rtc-LOCK140S-16R	5/8	16,0	22,6	24	348	160	2320	125	280	+ 10
rtc-LOCK140S-16B	5/8	16,0	22,6	24	348	160	2302	125	280	+ 10
rtc-LOCK140S-16S	5/8	16,0	22,6	24	348	160	2320	125	280	+ 10
rtc-LOCK140S-19R	3/4	19,0	25,8	21	305	120	1740	150	330	+ 10
rtc-LOCK140S-19B	3/4	19,0	25,8	21	305	120	1740	150	330	+ 10
rtc-LOCK140S-19S	3/4	19,0	25,8	21	305	120	1740	150	330	+ 10
rtc-LOCK140S-25R	1	25,4	33,2	20	290	90	1305	170	475	+ 10
rtc-LOCK140S-25B	1	25,4	33,2	20	290	90	1305	170	475	+ 10
rtc-LOCK140S-25S	1	25,4	33,2	20	290	90	1305	170	475	+ 10

Working Temperature Range for water  
Arbeitsbereich für wasser

-40 °C to +140 °C  
-40 °F to +284 °F

Working Temperature Range for air  
Arbeitsbereich für luft

-40 °C to +70 °C  
-40 °F to +158 °F

ASSEMBLE / MONTAGE 

In order to keep the hose in the correct angle cut it with a sharp knife or hose cutter (SAS26).

Schlauch rechtwinklig mit scharfem Messer oder Schlauchabschneider (SAS26) abschneiden.



Put the nipple inside the tube and push it to the yellow stop. Then just pull back.

Nippel in den Schlauch stecken und bis zum gelben Anschlag eindrücken. Anschließend kurz zurück ziehen.

DISASSEMBLE / DEMONTAGE 

Slightly cut the hose with a knife on the longitudinal axis. Pay attention not to damage the nipple.

Mit einem Messer den Schlauch leicht schräg zur Längsachse aufschneiden. Dabei dürfen die Rippen des Nippels nicht beschädigt werden.



Nipple is now pulled out of the hose and it can be used again.

Nippel aus dem Schlauch herausziehen und wiederverwenden.

rtc TYPE RTH



**Corrugated**

PTFE / PFA - Hose  
 PTFE: High quality inner liner of polytetrafluoroethylene-fluorinated ethylene or PFA, Perfluoralkoxy copolymer  
 Print rack stainless steel wire braid with fiber glass fabric or brass plated steel wire braid provide burst pressure up to 2,000 bar.  
 For use at high operating temperatures, as well as the chemical media; Stainless steel fittings, brass and mild steel, development and manufacturing. Customized packing

**Why PTFE / PFA tubing?**

- High chemical resistance to almost all chemicals, detergents and solvents
- Low weight, high flexibility with high bending strength • weathering, UV light and aging
- Water absorption <0.1%
- High temperature resistance from -70 ° and +250 °
- Extremely low internal friction value
- braid in stainless steel wire
- Also available with abrasion-proof plastic top cover

**Gewellter**

PTFE / PFA - Schlauch  
 PTFE: Hochwertige Innenseele aus Polyetra-Fluorethylen bzw. PFA, Perfluoralkoxy- Copolymer  
 Druckträger aus Edelstahlraht-Geflecht mit Glasseiden-Gewebe oder aus vermessingtem Stahldraht-Geflecht sorgen für Platzdruck bis zu 2.000 bar. Einsatz bei hohen Betriebstemperaturen, sowie chemischen Medien; Armaturen aus Edelstahl, Messing und Normalstahl, Entwicklung und Fertigung. Kundenspezifische Konfektionierung

**Warum PTFE / PFA Schläuche?**

- Hohe chemische Beständigkeit gegenüber fast allen Chemikalien, Reinigungs- und Lösungsmitteln
- Niedriges Gewicht, höch ste Flexibilität bei hoher Biegefestigkeit • Witterungs-, UV-Licht- und alterungsbeständig
- Wasseraufnahme < 0,1%
- Hohe Temperaturbeständigkeit zwischen -70° und +250°
- Extrem niedriger innerer Reibungswert
- Umflechtung in Edelstahlraht
- Auch mit abriebfester Kunststoffoberdecke lieferbar

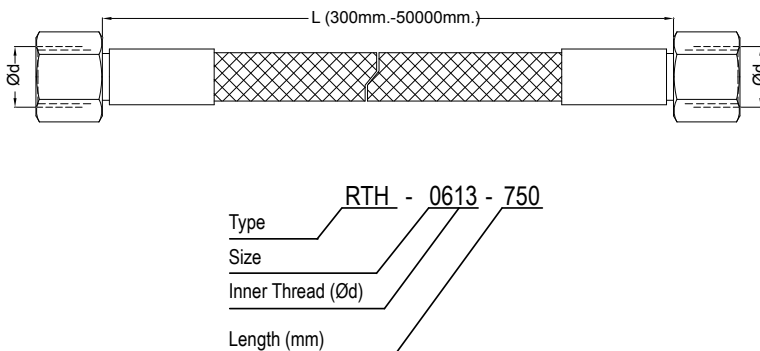
rtc TYPE RTH

Corrugated PTFE / PFA - Hose / Gewellter PTFE / PFA - Schlauch

Order No / Bestellnr.	Size Größe mm	Inside Innen Ø mm	Outside Außen Ø mm	Bending Radius Biegeradius mm	Max Working Pressure Arbeitsdruck bar	Burst Pressure Platzdruck bar
RTH-06	4	6.8	11.5	30	90	360
RTH-08	5	7.7	12.5	40	70	280
RTH-10	6	9.7	15	50	65	260
RTH-13	8	12.5	18	60	60	240
RTH-16	10	15.5	22	60	55	220
RTH-20	12	19.8	27	70	45	180
RTH-25	16	28	34.8	80	30	120

rtc TYPE RTH

Corrugated PTFE / PFA - Hose with connection adapter / Gewellter PTFE / PFA - Schlauch mit Anschlussadapter



Order No / Bestellnr.	Size Größe	Connections Anschluss Ød	L (mm)
RTH-0613-L	4	BSP 1/4	300 - 50.000
RTH-0614-L		M14x1.5	
RTH-0817-L	5	BSP 3/8	
RTH-0816-L		M16x1.5	
RTH-1021-L	6	BSP 1/2	
RTH-1018-L		M18x1.5	
RTH-1326-L	8	BSP 3/4	
RTH-1322-L		M22x1.5	
RTH-1633-L	10	BSP 1	
RTH-1626-L		M26x1.5	
RTH-2042-L	12	BSP1-1/4	
RTH-2030-L		M30x2.0	
RTH-2536-L	16	M36x2.0	

Water Flow Regulator - Wasserdurchflussregler TYPE WFR 



**Main Technical Features**

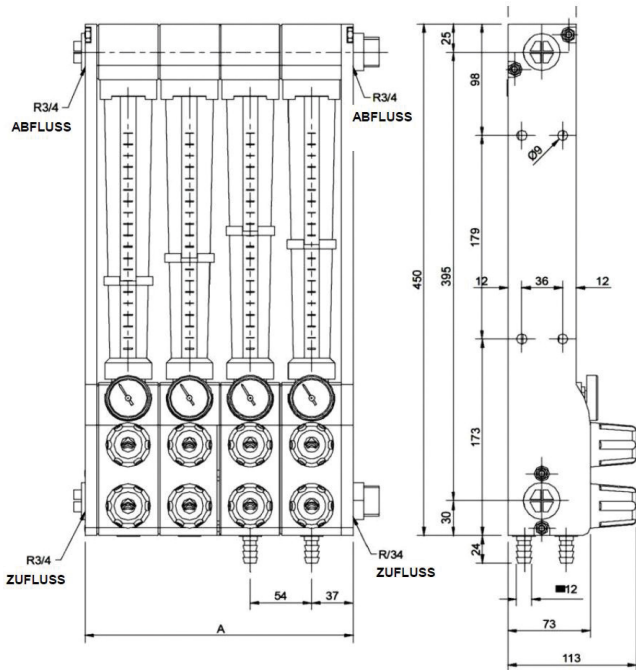
- Tube made of polyamide (Standard)
- Bodies made of PA 6 with 30% fiberglass
- Regulating Taps in brass
- Thermometer (Standard)
- Vitrilic rubber o-rings in vitriilo (hardness 70 SHA)
- Brass inlet and outlet valves are inserted in the body 3/8"
- Maximum working temperature 90 ° C

**Technische Einzelheiten**

- Schaurohr Polyamid standardmäßig
- Gehäusekörper Polyamid verstärkt mit 30% GF
- Vor- und Rücklaufventile aus Messing
- Thermometer standardmäßig
- Innen-Zugstangen aus VA-Stahl
- Dichtungsringe 70 Shore
- Anschlussstülen 3/8" bsp aus Messing
- Temperaturbeständig bis 90°C

Water Flow Regulator - Wasserdurchflussregler TYPE WFR 

Water Flow Regulator - Wasserdurchflussregler



Order No for ZR Type/ Bestellnr. für ZR Typ	Order No for ZS Type/ Bestellnr. für ZS Typ	No of Entrance Eingangnr.	A (mm)
WFR 01-ZR	WFR 01-ZS	1	73
WFR 02-ZR	WFR 02-ZS	2	126
WFR 03-ZR	WFR 03-ZS	3	179
WFR 04-ZR	WFR 04-ZS	4	231
WFR 05-ZR	WFR 05-ZS	5	284
WFR 06-ZR	WFR 06-ZS	6	339
WFR 07-ZR	WFR 07-ZS	7	392
WFR 08-ZR	WFR 08-ZS	8	444
WFR 09-ZR	WFR 09-ZS	9	497
WFR 10-ZR	WFR 10-ZS	10	552
WFR 11-ZR	WFR 11-ZS	11	607
WFR 12-ZR	WFR 12-ZS	12	659

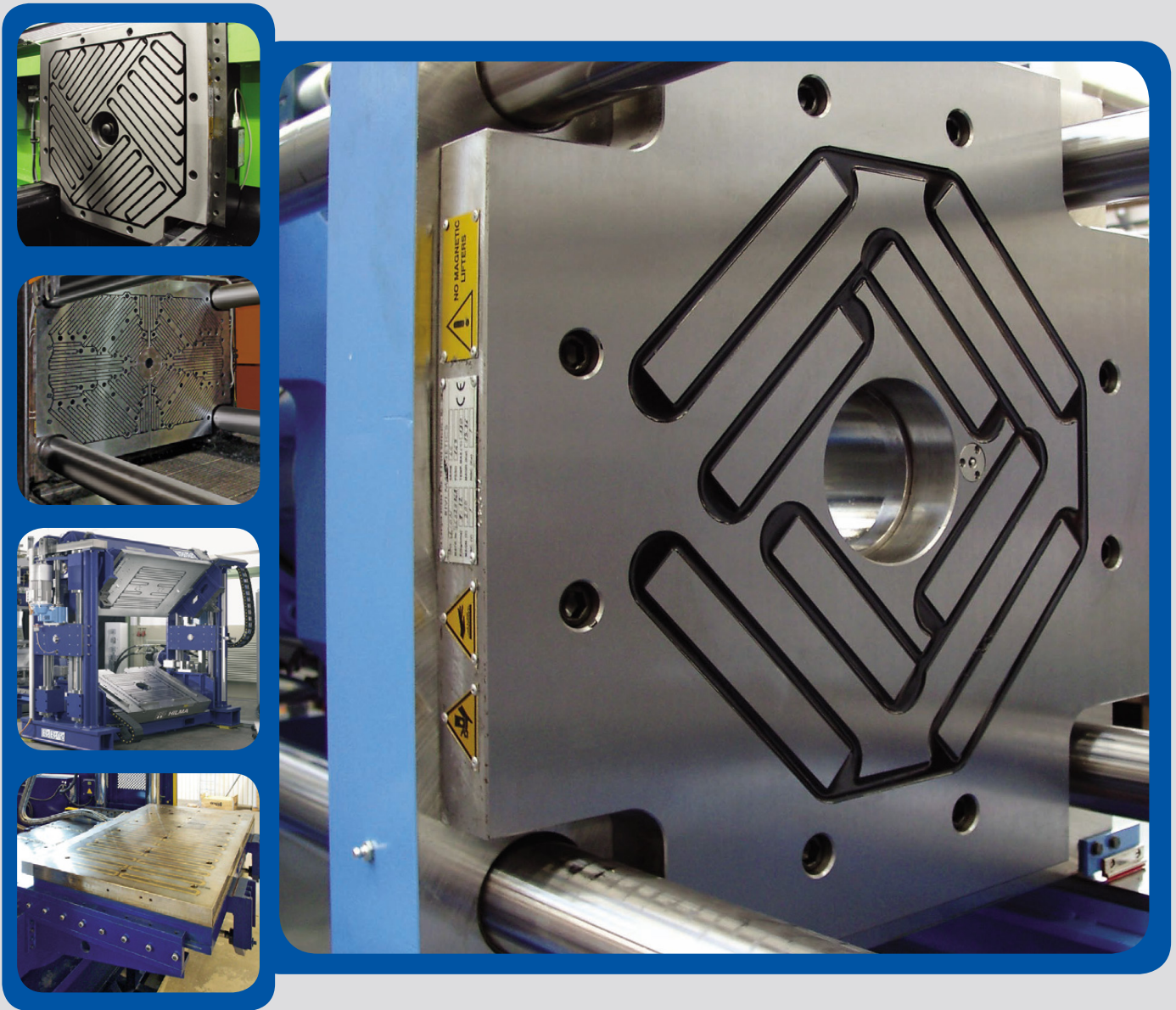
**ZR Type**  
Female Thread  
Innengewinde



**ZS Type**  
Hose Plug  
Schläuche Nippel







**rtc** TYPE MAG-TEX 130

The quick mold change system for thermoplastics. Stable up to 130°C

Das Schnellwechselsystem für Thermoplaste. Temperaturstabil bis 130°C

**Technical Specifications - Technische Daten**

Für Pressen und Spritzpressen  
Aller Größe, vertikal und horizontal.

For Injection and transfer molding  
All sizes, both vertically and horizontally.

Max. Temperature / Max. Temperatur	130°C
Magnetic Field / Spez. Magnetkraft	18 kg/cm <sup>2</sup>
Effective Magnetic F. / Effektive Magnetkraft	5-12 kg/cm <sup>2</sup>
Mag. Penetration Depth / Magn. Eindringtiefe	15-20 mm
Plate Thickness / Plattendicke	47 mm
Fastening / Befestigung	nach Euromap

**rtc** TYPE MAG-TEX 240

The quick mold change system for thermoplastics. Stable up to 240°C

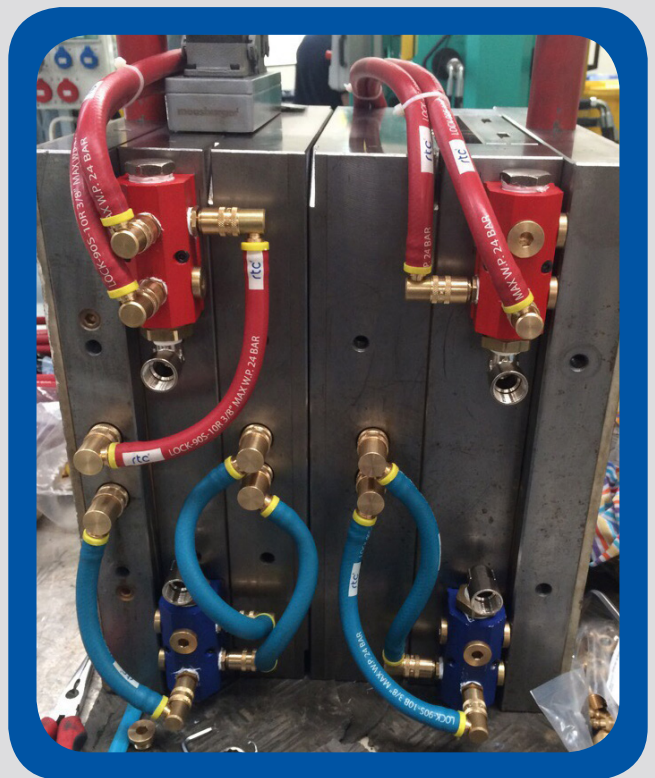
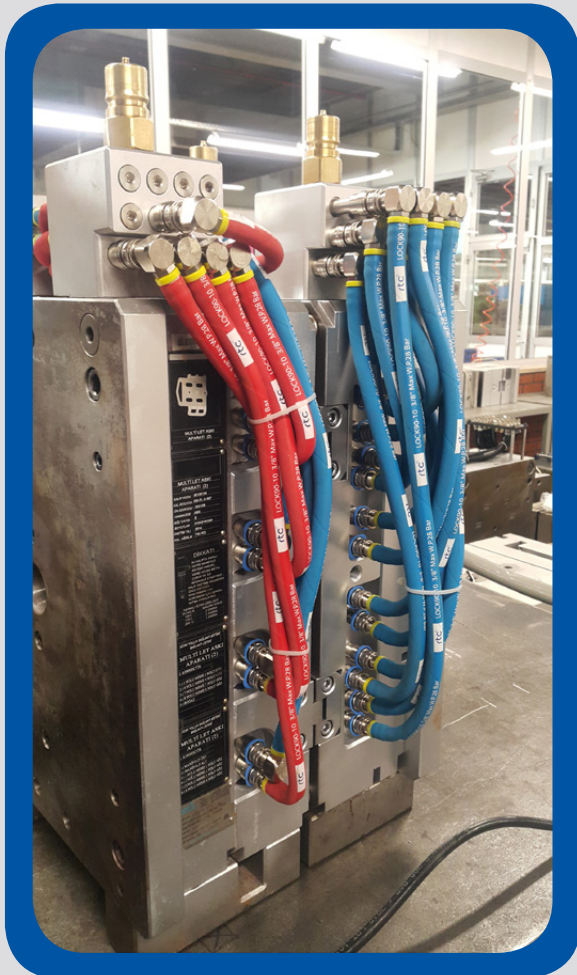
Das Schnellwechselsystem für Thermoplaste. Temperaturstabil bis 240°C

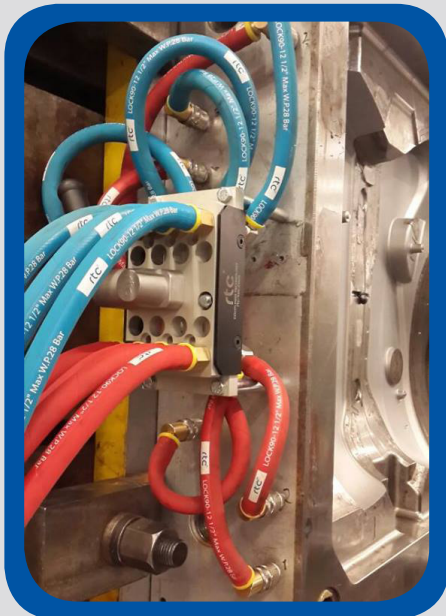
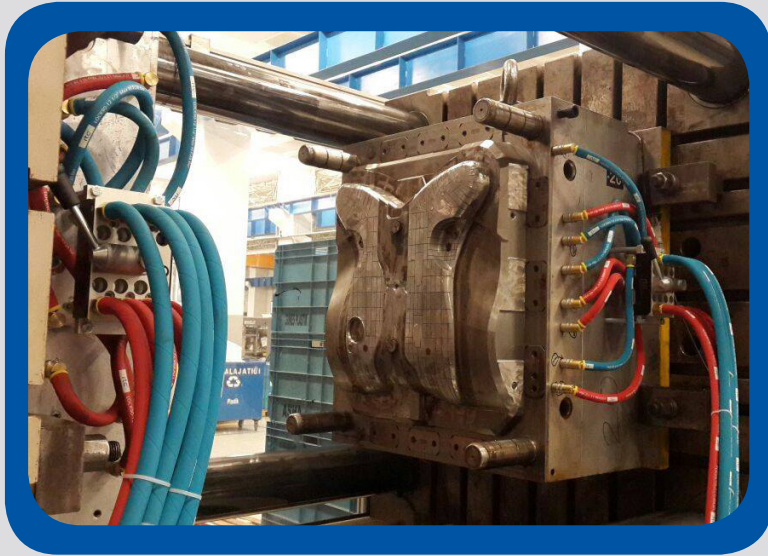
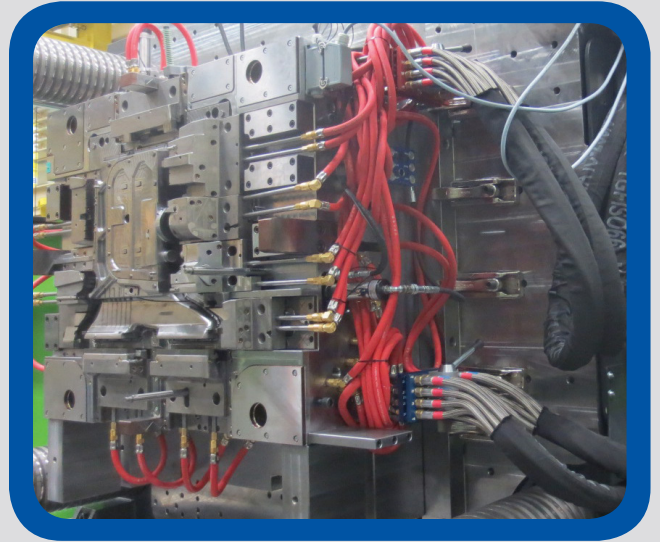
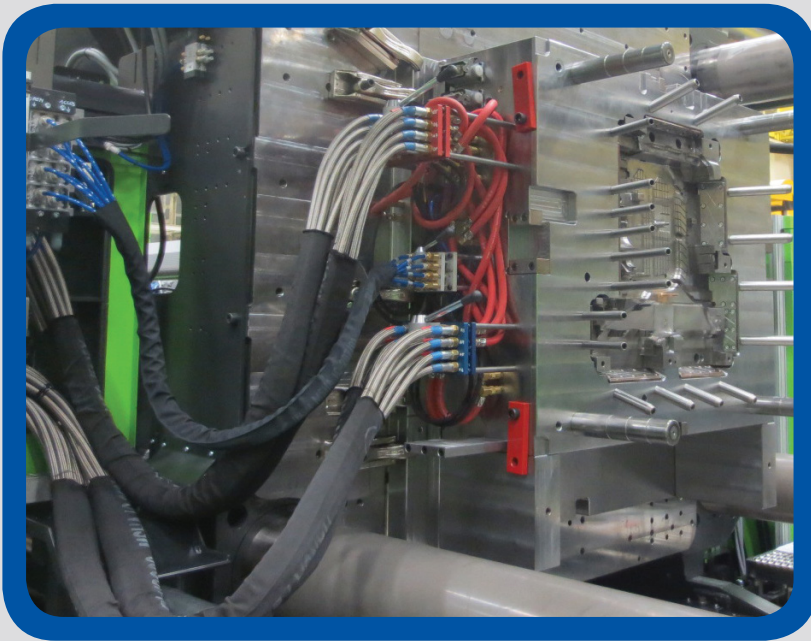
**Technical Specifications - Technische Daten**

Lieferbar für Maschinen von 300kN bis 50.000 kN.  
Größere Systeme auf Anfrage.  
Mit und ohne Heizung

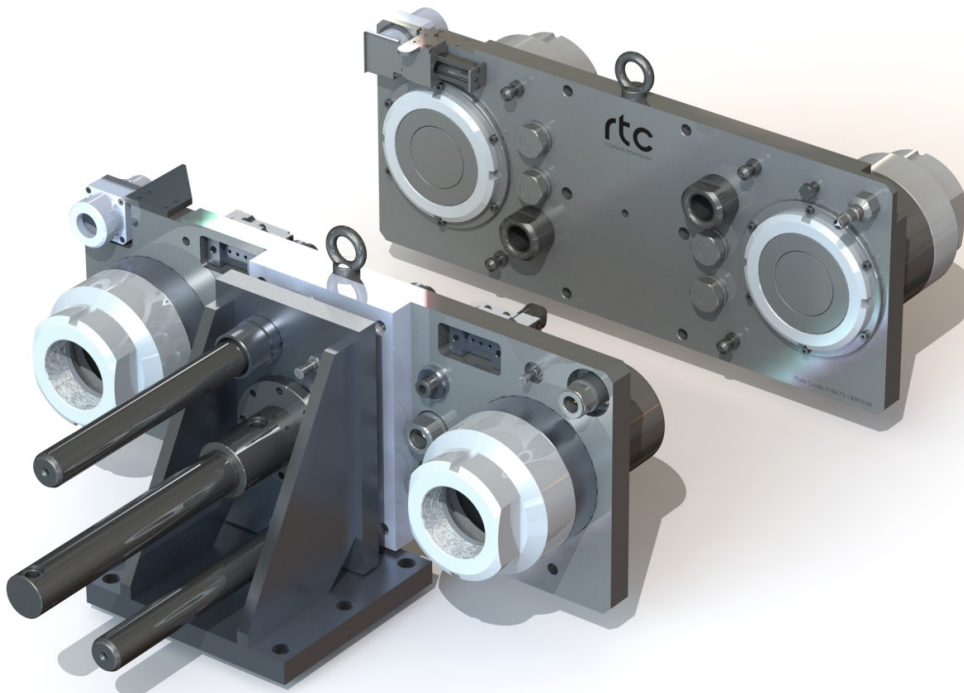
This can be used from 300kN to 50,000kN injection machines.  
For larger systems request is needed.  
With or without heating.

Max. Temperature / Max. Temperatur	240°C
Magnetic Field / Spez. Magnetkraft	18 kg/cm <sup>2</sup>
Effective Magnetic F. / Effektive Magnetkraft	5-12 kg/cm <sup>2</sup>
Mag. Penetration Depth / Magn. Eindringtiefe	15-20 mm
Plate Thickness / Plattendicke	55 mm
Fastening / Befestigung	nach Euromap





rtc TYPE Customised Multi Coupling System

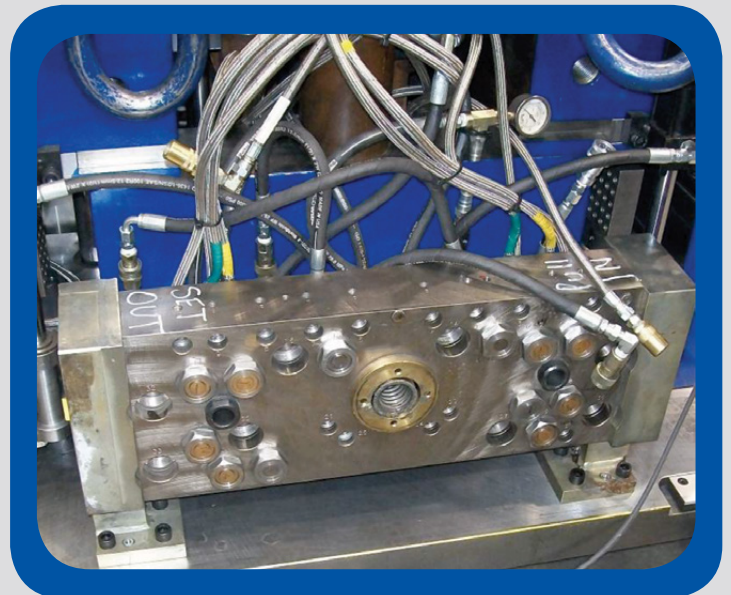
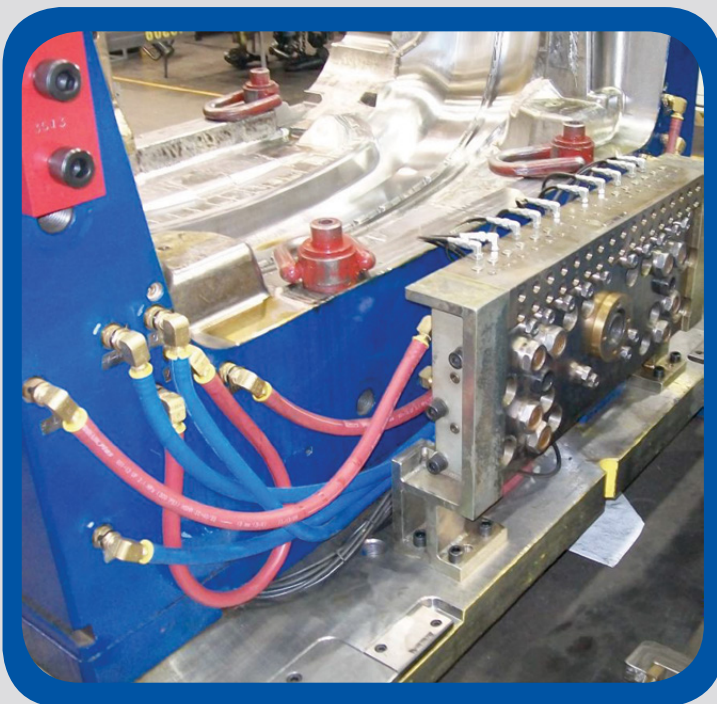


Customised Multi-Couplings  
Sondermultikupplungen nach Kundenwunsch

Customised Multi-Couplings are specially designed according to the customer's needs.

All kinds of connections, such as, **Water**, Pneumatic, **Hydraulic** and **Electrical Connectors** can be mounted on the same plate, in order to minimise the mold changing time without any possible mistake.

Our Research & Development team provides the best solution to the end users, according to the specific inquiries.



Compatible - Kompatibilität  
For Full-Flow and Single Shut-off  
Rectus 20  
Walther 06-003

For Double Shut-off  
Rectus 20KB  
Walther 06-003

Temperature Range - Temperaturbereich  
-20°C +100°C (-4°F +212°F) Nitril (N)

Max. Working Pressure - Max. Betriebsdruck  
35 bar (510 PSI)

Flow size - Nennweiten  
rtc type 020 2.7 mm

**TYPE 020** **rtc**



**WATER**  
**PNEUMATIC**



Compatible - Kompatibilität  
For Full-Flow and Single Shut-off  
Rectus 21  
Camozzi

For Double Shut-off  
Rectus 21KB

Temperature Range - Temperaturbereich  
-20°C +100°C (-4°F +212°F) Nitril (N)

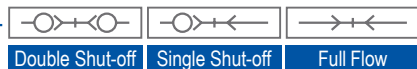
Max. Working Pressure - Max. Betriebsdruck  
35 bar (510 PSI)

Flow size - Nennweiten  
rtc type 021 5 mm

**TYPE 021** **rtc**



**WATER**  
**PNEUMATIC**



Compatible - Kompatibilität  
rtc 462.06  
AMFLO C38  
ARO 210  
Cejn 300  
Foster 210  
Parker B53  
Rectus 14 & 22

Temperature Range - Temperaturbereich  
-20°C +100°C (-4°F +212°F) Nitril (N)

Max. Working Pressure - Max. Betriebsdruck  
35 bar (510 PSI)

Flow size - Nennweiten  
rtc type 022 5.5 mm

**TYPE 022** **rtc**



**PNEUMATIC**



Compatible - Kompatibilität  
US (Industrial) MIL-C-4109 1/4  
ISO 6150-B-12  
rtc 460.06  
Hansen 1000  
Cejn 310  
Foster 3003  
Parker B23  
Rectus 23 & 24

Temperature Range - Temperaturbereich  
-20°C +100°C (-4°F +212°F) Nitril (N)

Max. Working Pressure - Max. Betriebsdruck  
35 bar (510 PSI)

Flow size - Nennweiten  
rtc type 023 5.5 mm

**TYPE 023** **rtc**



**PNEUMATIC**



**rtc TYPE 25**

Compatible - Kompatibilität

For Full-Flow and Single Shut-off

For Double Shut-off

rtc 463.08

rtc 026

Rectus 25 &amp; 26

Cejn 320

Rectus 25KB &amp; 26KB

Temperature Range - Temperaturbereich

-20°C +100°C (-4°F +212°F) Nitril (N)

Max. Working Pressure - Max. Betriebsdruck

35 bar (510 PSI)

Flow size - Nennweiten

rtc type 025 7.8 mm



Double Shut-off

Single Shut-off

Full Flow

PNEUMATIC

**rtc TYPE 26**

Compatible - Kompatibilität

For Full-Flow and Single Shut-off

For Double Shut-off

rtc 463.08

rtc 025

Rectus 25 &amp; 26

Cejn 320

Rectus 25KB &amp; 26KB

Temperature Range - Temperaturbereich

-20°C +100°C (-4°F +212°F) Nitril (N)

Max. Working Pressure - Max. Betriebsdruck

35 bar (510 PSI)

Flow size - Nennweiten

rtc type 026 7.2 mm



Double Shut-off

Single Shut-off

Full Flow

PNEUMATIC

**rtc TYPE 027**

Compatible - Kompatibilität

For Full-Flow and Single Shut-off

For Double Shut-off

Rectus 27

Cejn 410

Tema 1700

Rectus 27KB

Temperature Range - Temperaturbereich

-20°C +100°C (-4°F +212°F) Nitril (N)

Max. Working Pressure - Max. Betriebsdruck

35 bar (510 PSI)

Flow size - Nennweiten

rtc type 027 10 mm



Double Shut-off

Single Shut-off

Full Flow

PNEUMATIC

**rtc TYPE 045**

Compatible - Kompatibilität

Parker ST

Hansen ST

Flow size - Nennweiten

rtc type 045.04 4 mm

rtc type 045.06 6.5 mm

rtc type 045.10 9.5 mm

rtc type 045.13 12.7 mm

rtc type 045.19 19 mm

rtc type 045.25 25 mm

rtc type 045.33 33 mm

rtc type 045.37 37 mm

Temperature Range - Temperaturbereich

-20°C +100°C (-4°F +212°F) Nitril (N)

-10°C +180°C (+14°F +356°F) FPM (V)

-50°C +150°C (-58°F +302°F) EPDM (E)

Working Pressure - Betriebsdruck

70 - 310 bar (510 PSI) - For brass

140 - 350 bar - (2025 - 5075 PSI) For Steel

100 - 450 bar - (1450 - 6525 PSI) For Stainless-steel



Full Flow


  
WATER  
PNEUMATIC  
HYDRAULIC

**TYPE Swing Coupler** **rtc**

Self Venting Type

Sicherheits - Schnellkupplung

- The system perfectly fits to the **ISO 4414**, **EN 983** safety standarts.
- Full flow, negligible loss of pressure
- Simple operation, no force required
- Compact design

Flow size - Nennweiten

3 mm - 1/8	rtc 461.03
5.5 mm - 1/4	rtc 460.06 / 461.06 / 462.06 / 466.06 / 467.06
8 mm - 3/8	rtc 460.08 / 461.08 / 463.08 / 464.08 / 465.08 / 468.08
11 mm - 1/2	rtc 460.11 / 461.11
19 mm - 3/4	rtc 461.19

Temperature Range - Temperaturbereich  
-20°C +100°C (-4°F +212°F) Nitril (N)  
-10°C +180°C (+14°F +356°F) FPM (V)

Max. Working Pressure - Betriebsdruck  
25 bar (360 PSI)  
15 bar (200 PSI) Connection / Disconnection



**PNEUMATIC**

**TYPE Sleeve Twist Coupler** **rtc**

Self Venting Type

Sicherheits - Schnellkupplung

- The system perfectly fits to the **ISO 4414**, **EN 983** safety standarts.
- Model to ISO 6150-C-10 and AFNOR: C-10 NF E 49-053
- Safety feature: 2-stage disconnection

Flow size - Nennweiten

5.5mm - 1/4	rtc 450.06
8mm - 3/8	rtc 450.08
11mm - 1/2	rtc 450.11
5.5mm - 1/4	rtc 451.06
8mm - 3/8	rtc 451.08
11mm - 1/2	rtc 451.11

Temperature Range - Temperaturbereich  
-20°C +100°C (-4°F +212°F) Nitril (N)  
-10°C +180°C (+14°F +356°F) FPM (V)

Max. Working Pressure - Betriebsdruck  
25 bar (360 PSI)  
15 bar (200 PSI) Connection / Disconnection



**PNEUMATIC**

**TYPE Coded Coupler** **rtc**

Self Venting Type

Sicherheits - Schnellkupplung

- The system perfectly fits to the **ISO 4414**, **EN 983** safety standarts.
- Model to ISO 6150-C-10 and AFNOR: C-10 NF E 49-053
- Safety feature: 2-stage disconnection

Flow size - Nennweiten

5.5mm - 1/4	rtc 452.06
-------------	------------

Temperature Range - Temperaturbereich  
-20°C +100°C (-4°F +212°F) Nitril (N)  
-10°C +180°C (+14°F +356°F) FPM (V)

Max. Working Pressure - Betriebsdruck  
25 bar (360 PSI)  
15 bar (200 PSI) Connection / Disconnection



**PNEUMATIC**

**TYPE Heavy Duty** **rtc**

Self Venting Type

Sicherheits - Schnellkupplung

- The system perfectly fits to the **ISO 4414**, **EN 983** safety standarts.
- Model to ISO 6150-C-10 and AFNOR: C-10 NF E 49-053
- Safety feature: 2-stage disconnection

Flow size - Nennweiten

11mm - 1/2	rtc 453.11
19mm - 3/4	rtc 453.19

Temperature Range - Temperaturbereich  
-20°C +100°C (-4°F +212°F) Nitril (N)  
-10°C +180°C (+14°F +356°F) FPM (V)

Max. Working Pressure - Betriebsdruck  
25 bar (360 PSI)  
15 bar (200 PSI) Connection / Disconnection



**PNEUMATIC**

**rtc TYPE 200**

## Flow size - Nennweiten

rtc 200.04	4 mm
rtc 200.06	6 mm
rtc 200.07	7 mm
rtc 200.09	9 mm
rtc 200.12	12 mm
rtc 200.19	19 mm
rtc 200.32	32 mm
rtc 200.50	50 mm

Compatible: Walther LP Type

Temperature Range - Temperaturbereich  
 -20°C +100°C (-4°F +212°F) Nitril (N)  
 -10°C +180°C (+14°F +356°F) FPM (V)

Working Pressure - Betriebsdruck  
 30 - 100 bar (435 - 1450 PSI)



Double Shut-off    Single Shut-off    Full Flow


**rtc TYPE 201**

## Flow size - Nennweiten

rtc 201.06	6 mm
rtc 201.07	7 mm
rtc 201.12	12 mm
rtc 201.19	19 mm
rtc 201.25	25 mm
rtc 201.32	32 mm
rtc 201.50	50 mm

Compatible: Walther MD Type

Temperature Range - Temperaturbereich  
 -20°C +100°C (-4°F +212°F) Nitril (N)  
 -10°C +180°C (+14°F +356°F) FPM (V)

Working Pressure - Betriebsdruck  
 100 - 250 bar (1450 - 3625 PSI)



Double Shut-off    Single Shut-off    Full Flow


**rtc TYPE 202**

## Flow size - Nennweiten

rtc 201.04	4 mm
rtc 201.06	6 mm
rtc 201.10	10 mm
rtc 201.16	16 mm
rtc 201.20	20 mm
rtc 201.32	32 mm
rtc 201.50	50 mm

Compatible: Walther HP Type

Temperature Range - Temperaturbereich  
 -20°C +100°C (-4°F +212°F) Nitril (N)  
 -10°C +180°C (+14°F +356°F) FPM (V)

Working Pressure - Betriebsdruck  
 200 - 2000 bar (2900 - 29000 PSI)



Double Shut-off    Single Shut-off    Full Flow


**rtc TYPE 203**

## Flow size - Nennweiten

rtc 203.09	9 mm
rtc 203.12	12 mm
rtc 203.19	19 mm
rtc 203.32	32 mm
rtc 203.50	50 mm

Compatible: Walther TE Type

Temperature Range - Temperaturbereich  
 -20°C +270°C (-4°F +518°F) PTFE (T)

Working Pressure - Betriebsdruck  
 30 - 100 bar (435 - 1450 PSI)



Double Shut-off    Single Shut-off    Full Flow





A large grid area for taking notes, consisting of a fine grid of small squares. The grid is approximately 30 squares wide and 60 squares high, covering most of the page area below the header and above the footer.